

STANDARD ARRIVAL CHART - INSTRUMENT (STAR) - ICAO (OVERLAY TO RADAR VECTOR PATTERN)

TRANSITION ALTITUDE
2750 m

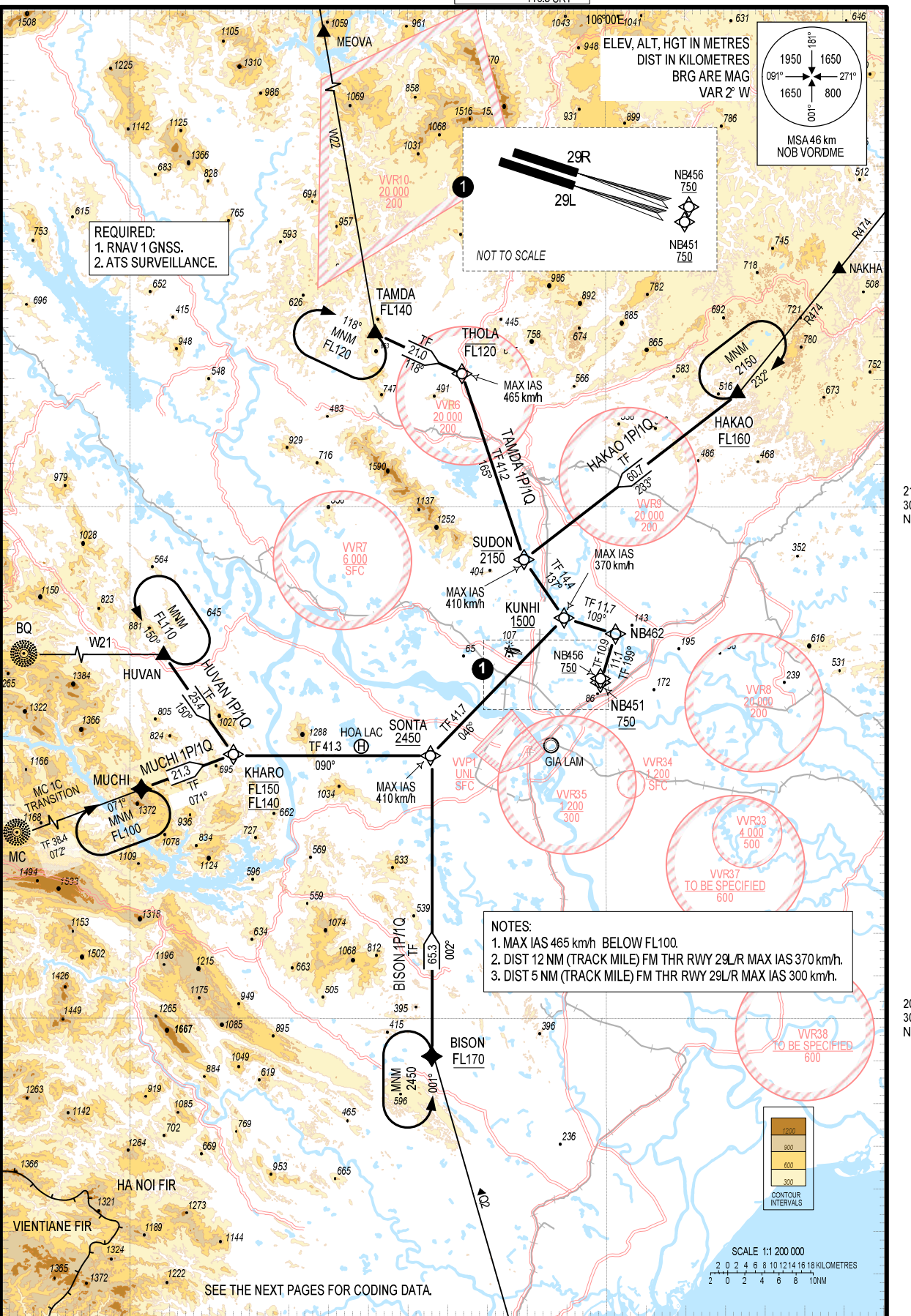
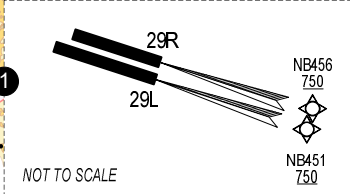
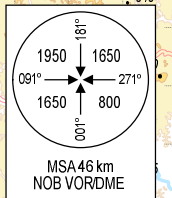
TERMINAL: 125.1 PRI
126.575 SRY
ARRIVAL: 121.0 PRI
120.075 SRY
TWR: 118.4 PRI
118.9 SRY

**HA NOI/NOI BAI INTL (VNB)
RNAV RWY 29L/R
TAMDA 1P/1Q, HAKAO 1P/1Q,
BISON 1P/1Q, MUCHI 1P/1Q, HUVAN 1P/1Q**

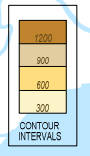
105°00'E

REQUIRED:
1. RNAV 1 GNSS.
2. ATS SURVEILLANCE.

ELEV, ALT, HGT IN METRES
DIST IN KILOMETRES
BRG ARE MAG
VAR 2° W



NOTES:
1. MAX IAS 465 km/h BELOW FL100.
2. DIST 12 NM (TRACK MILE) FM THR RWY 29L/R MAX IAS 370 km/h.
3. DIST 5 NM (TRACK MILE) FM THR RWY 29L/R MAX IAS 300 km/h.



SCALE 1:1 200 000
2 0 2 4 6 8 10 12 14 16 18 KILOMETRES
2 0 2 4 6 8 10 NM

SEE THE NEXT PAGES FOR CODING DATA.