

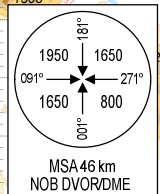
**STANDARD ARRIVAL CHART -
INSTRUMENT (STAR) - ICAO
(OVERLAY TO RADAR VECTOR PATTERN)**

TRANSITION ALTITUDE
2750 m

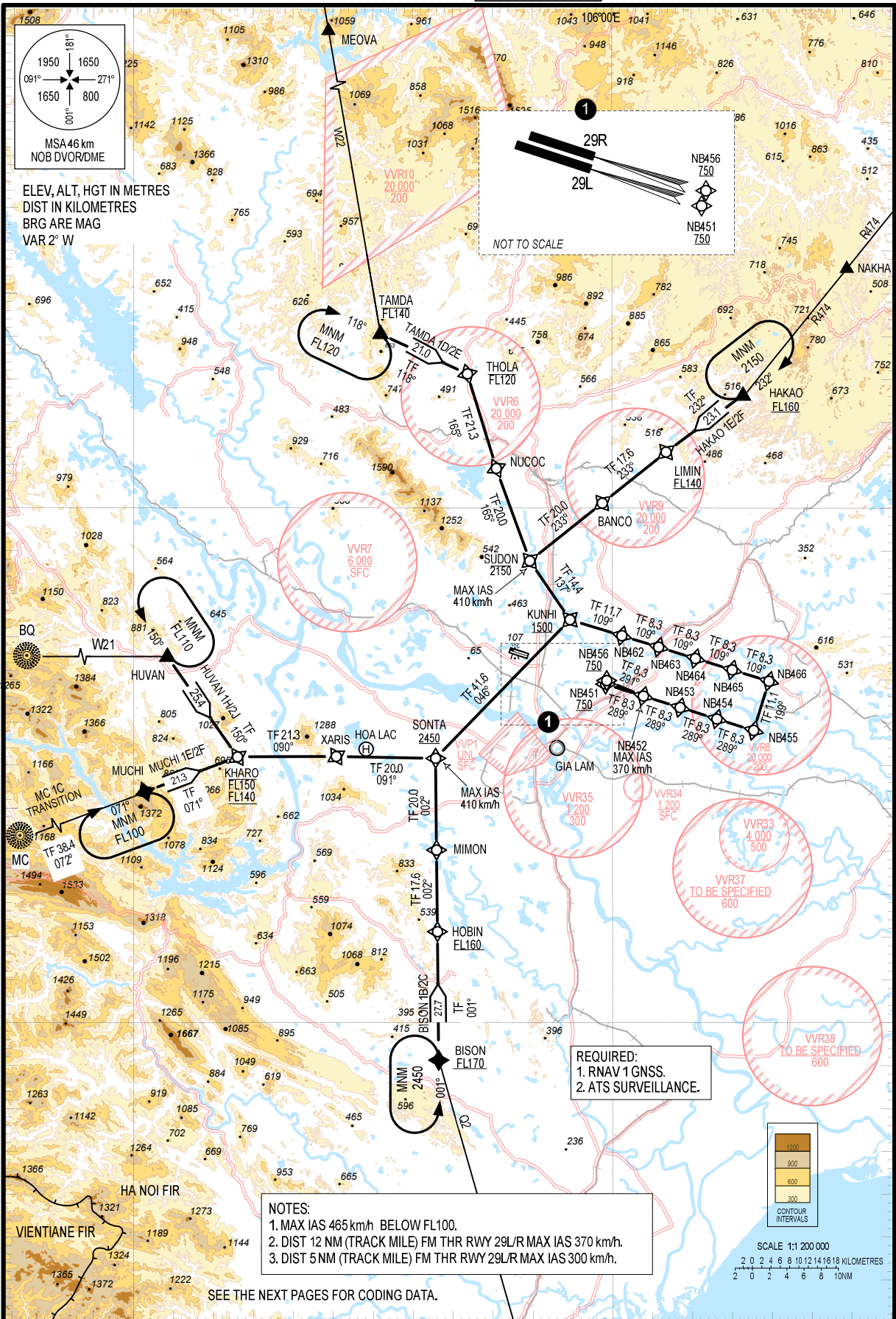
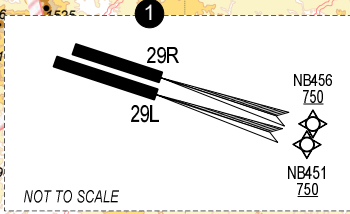
TMC: 125.1 PRI
126.575 SRY
ARR: 121.0 PRI
120.075 SRY
TWR: 118.4 PRI
118.9 SRY

**HA NOI/NOI BAI INTL (VNB)
RNAV Rwy 29L/R
TAMDA 1D/2E, HAKAO 1E/2F,
BISON 1B/2C, MUCHI 1E/2F, HUVAN 1H/2J**

105°00'E



ELEV, ALT, HGT IN METRES
DIST IN KILOMETRES
BRG ARE MAG
VAR 2° W

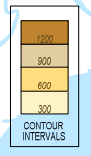


21° 30' N

20° 30' N

REQUIRED:
1. RNAV 1 GNSS.
2. ATS SURVEILLANCE.

NOTES:
1. MAX IAS 465 km/h BELOW FL100.
2. DIST 12 NM (TRACK MILE) FM THR RWY 29L/R MAX IAS 370 km/h.
3. DIST 5 NM (TRACK MILE) FM THR RWY 29L/R MAX IAS 300 km/h.



SCALE 1:1 200 000
2 0 2 4 6 8 10 12 14 16 18 KILOMETRES
2 0 2 4 6 8 10 NM

SEE THE NEXT PAGES FOR CODING DATA.