

STANDARD ARRIVAL CHART - INSTRUMENT (STAR) - ICAO (OVERLAY TO RADAR VECTOR PATTERN)

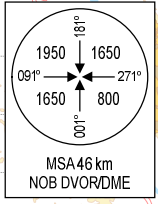
TRANSITION ALTITUDE
2750 m

TMC: 125.1 PRI
126.575 SRY
ARR: 121.0 PRI
120.075 SRY
TWR: 118.4 PRI
118.9 SRY

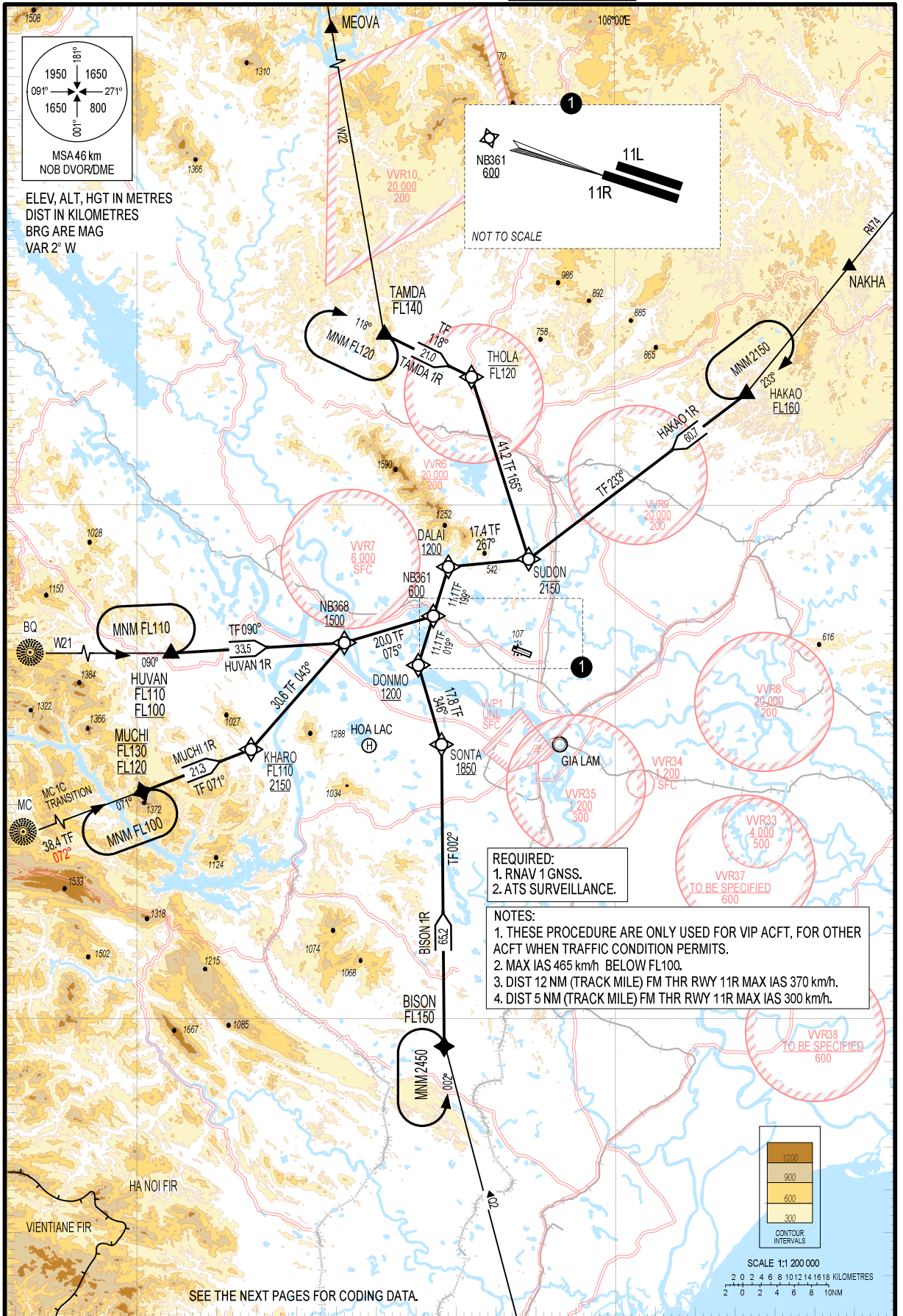
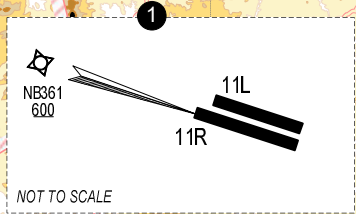
**HA NOI NOU BAI INTL (VNVB)
RNAV RWY 11R
TAMDA 1R, HAKAO 1R,
BISON 1R, MUCHI 1R, HUVAN 1R**

105°00'E

106°00'E

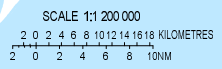
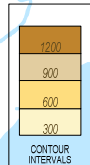


ELEV, ALT, HGT IN METRES
DIST IN KILOMETRES
BRG ARE MAG
VAR 2° W



REQUIRED:
1. RNAV 1 GNSS.
2. ATS SURVEILLANCE.

NOTES:
1. THESE PROCEDURE ARE ONLY USED FOR VIP ACFT, FOR OTHER ACFT WHEN TRAFFIC CONDITION PERMITS.
2. MAX IAS 465 km/h BELOW FL100.
3. DIST 12 NM (TRACK MILE) FM THR RWY 11R MAX IAS 370 km/h.
4. DIST 5 NM (TRACK MILE) FM THR RWY 11R MAX IAS 300 km/h.



SEE THE NEXT PAGES FOR CODING DATA.

21° 30' N

20° 30' N