

STANDARD ARRIVAL CHART - INSTRUMENT (STAR) - ICAO (OVERLAY TO RADAR VECTOR PATTERN)

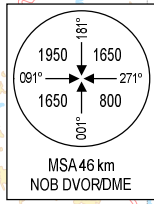
TRANSITION ALTITUDE
2750 m

TMC: 125.1PRI
126.575 SRY
ARR: 121.0PRI
120.075 SRY
TWR: 118.4 PRI
118.9 SRY

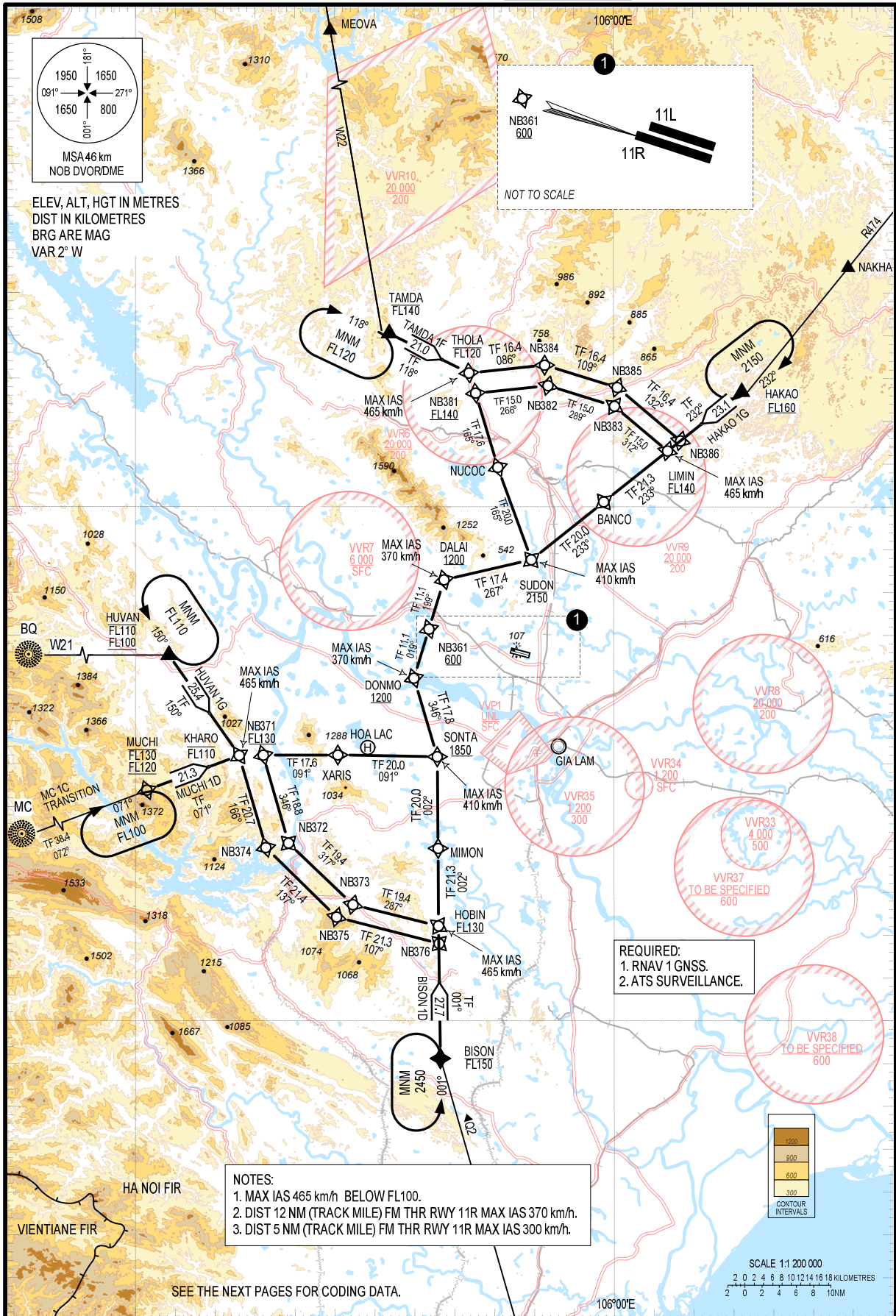
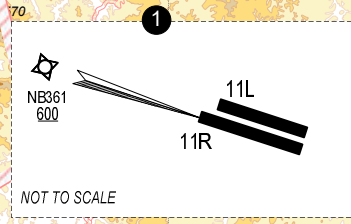
**HA NOI/VN BAI INTL (VNB)
RNAV RWY 11R
TAMDA 1F, HAKAO 1G,
BISON 1D, MUCHI 1D, HUVAN 1G**

105°00'E

106°00'E

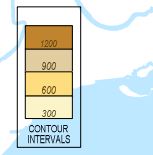


ELEV, ALT, HGT IN METRES
DIST IN KILOMETRES
BRG ARE MAG
VAR 2° W



REQUIRED:
1. RNAV 1 GNSS.
2. ATS SURVEILLANCE.

NOTES:
1. MAX IAS 465 km/h BELOW FL100.
2. DIST 12 NM (TRACK MILE) FM THR RWY 11R MAX IAS 370 km/h.
3. DIST 5 NM (TRACK MILE) FM THR RWY 11R MAX IAS 300 km/h.



SCALE 1:1 200 000
2 0 2 4 6 8 10 12 14 16 18 KILOMETRES
2 0 2 4 6 8 10 NM

SEE THE NEXT PAGES FOR CODING DATA.

106°00'E

21° 30' N

20° 30' N

HA NOI FIR

VIENTIANE FIR