

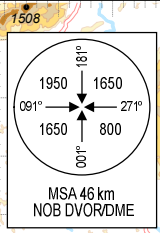
**STANDARD ARRIVAL CHART -
INSTRUMENT (STAR) - ICAO
(OVERLAY TO RADAR VECTOR PATTERN)**

TRANSITION ALTITUDE
2750m

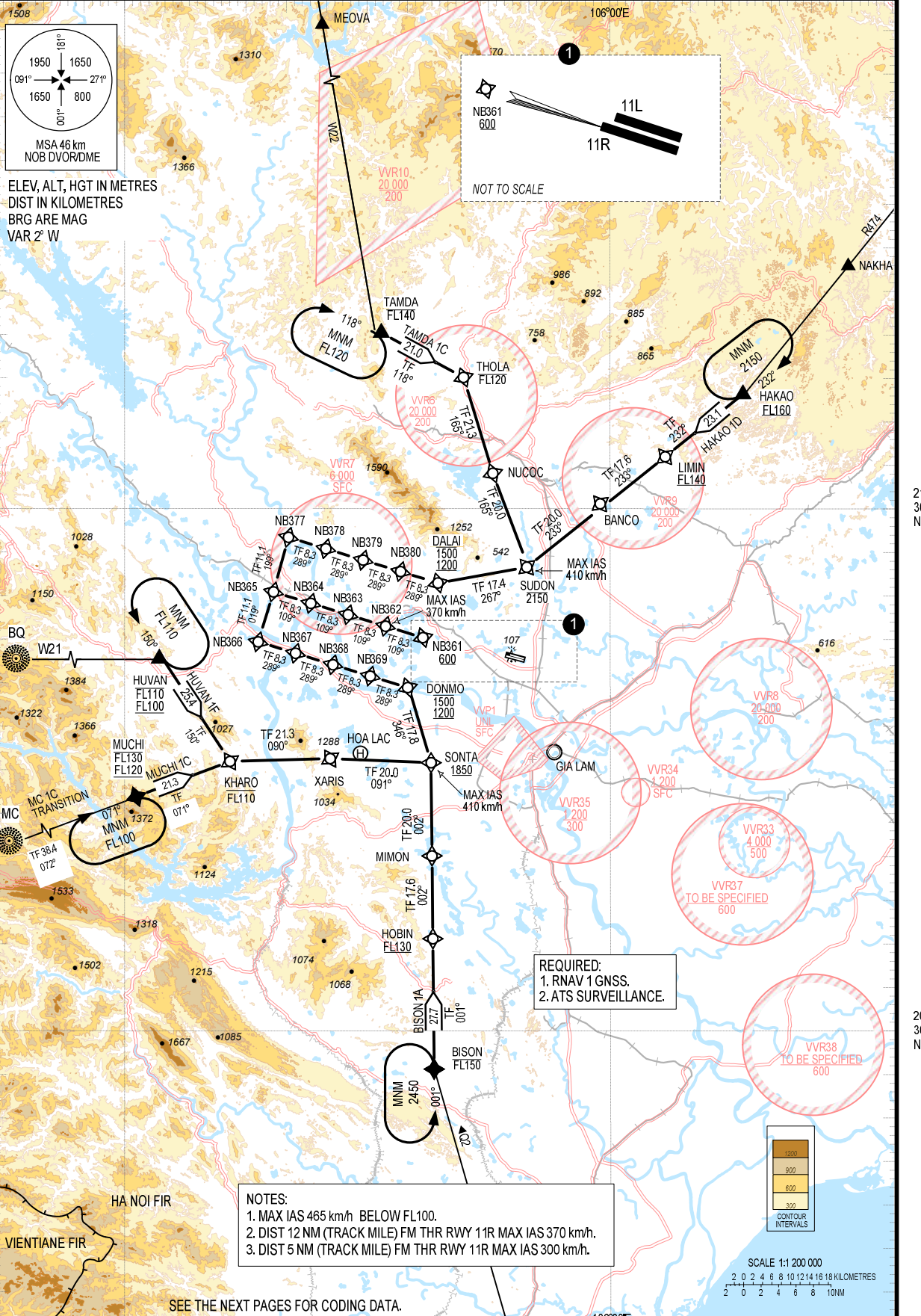
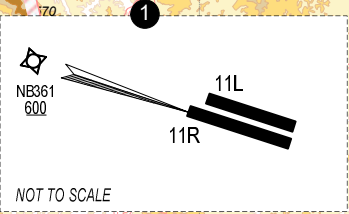
MTC: 125.1 PRI
126.575 SRY
ARR: 121.0 PRI
120.075 SRY
TWR: 118.4 PRI
118.9 SRY

**HA NOI INTR BAI INTL (VNB)
RNAV RWY 11R
TAMDA 1C, HAKAO 1D,
BISON 1A, MUCHI 1C, HUVAN 1F**

105°00'E

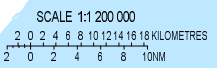
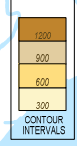


ELEV, ALT, HGT IN METRES
DIST IN KILOMETRES
BRG ARE MAG
VAR 2° W



**REQUIRED:
1. RNAV 1 GNSS.
2. ATS SURVEILLANCE.**

- NOTES:**
1. MAX IAS 465 km/h BELOW FL100.
 2. DIST 12 NM (TRACK MILE) FM THR RWY 11R MAX IAS 370 km/h.
 3. DIST 5 NM (TRACK MILE) FM THR RWY 11R MAX IAS 300 km/h.



SEE THE NEXT PAGES FOR CODING DATA.

106°00'E

21° 30' N

20° 30' N