

**STANDARD ARRIVAL CHART -
INSTRUMENT (STAR) - ICAO
(OVERLAY TO RADAR VECTOR PATTERN)**

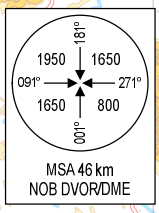
TRANSITION ALTITUDE
2750 m

TMC: 125.1 PRI
126.575 SRY
ARR: 121.0 PRI
120.075 SRY
TWR: 118.4 PRI
118.9 SRY

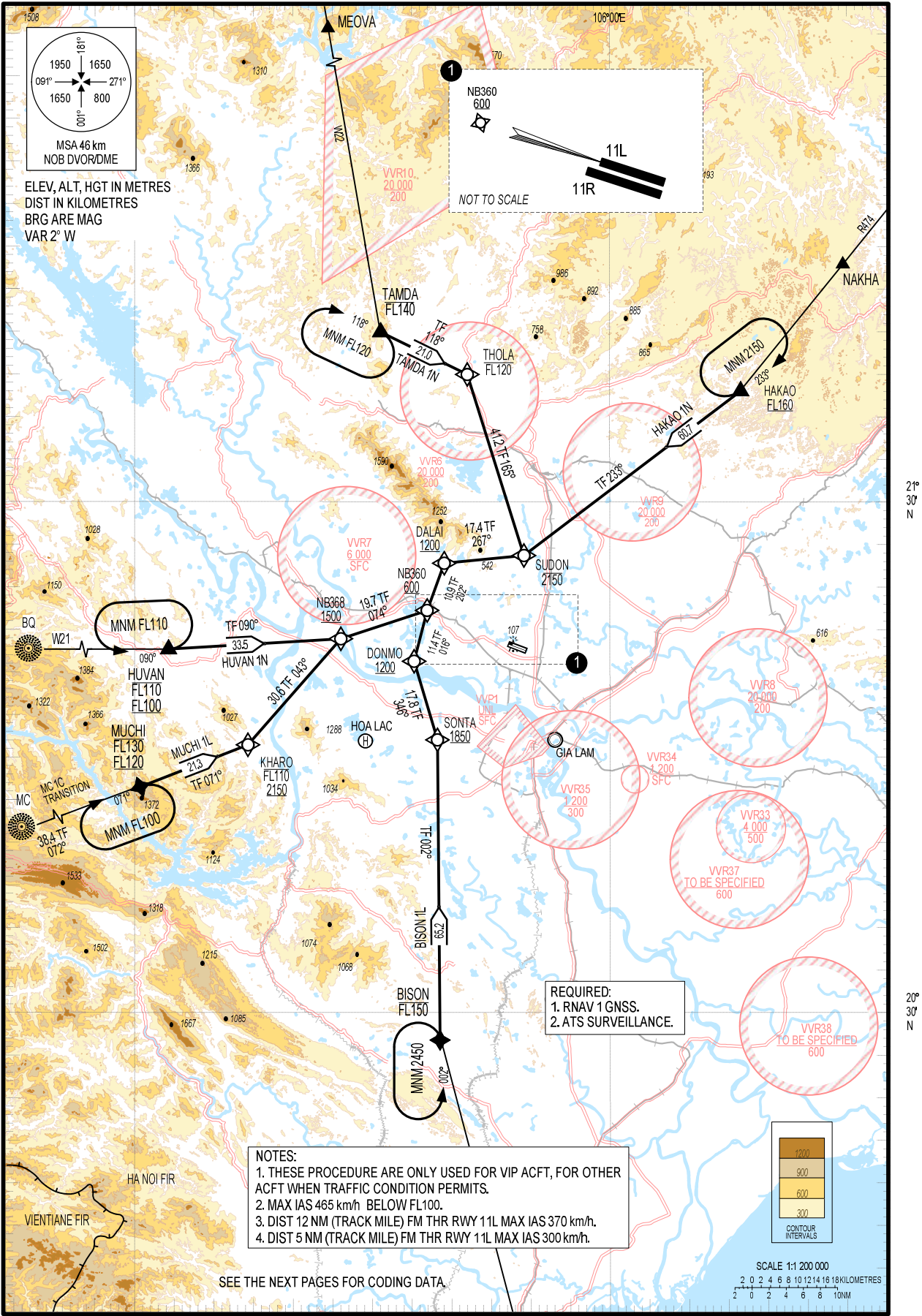
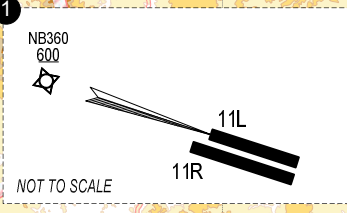
**HA NOI/MI BAI INTL (VNB)
RNAV RWY 11L
TAMDA 1N, HAKAO 1N,
BISON 1L, MUCHI 1L, HUVAN 1N**

105°00'E

106°00'E



ELEV, ALT, HGT IN METRES
DIST IN KILOMETRES
BRG ARE MAG
VAR 2° W



REQUIRED:
1. RNAV 1 GNSS.
2. ATS SURVEILLANCE.

NOTES:
1. THESE PROCEDURE ARE ONLY USED FOR VIP ACFT, FOR OTHER ACFT WHEN TRAFFIC CONDITION PERMITS.
2. MAX IAS 465 km/h BELOW FL100.
3. DIST 12 NM (TRACK MILE) FM THR RWY 11L MAX IAS 370 km/h.
4. DIST 5 NM (TRACK MILE) FM THR RWY 11L MAX IAS 300 km/h.

SEE THE NEXT PAGES FOR CODING DATA.

SCALE 1:1 200 000
2 0 2 4 6 8 10 12 14 16 18 KILOMETRES
2 0 2 4 6 8 10 NM