

**STANDARD ARRIVAL CHART -  
INSTRUMENT (STAR) - ICAO  
(OVERLAY TO RADAR VECTOR PATTERN)**

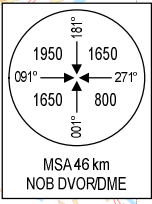
TRANSITION ALTITUDE  
2750 m

TMC: 125.1 PRI  
126.575 SRY  
ARR: 121.0 PRI  
120.075 SRY  
TWR: 118.4 PRI  
118.9 SRY

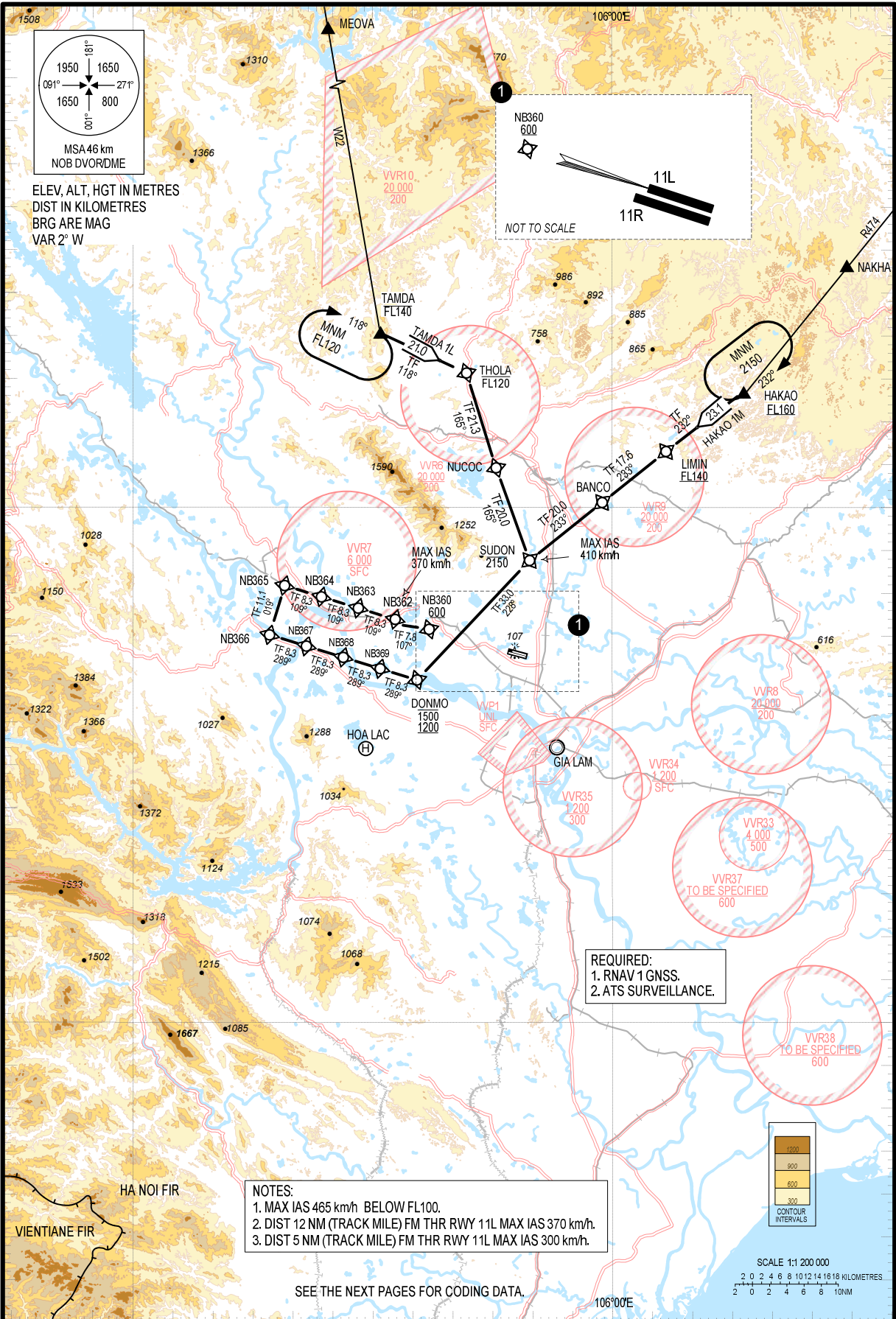
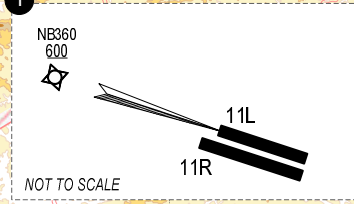
**HA NOI/NOI BAI INTL (VNB)  
RNAV RWY 11L  
TAMDA 1L, HAKAO 1M**

105°00'E

106°00'E

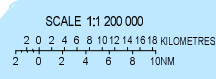
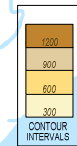


ELEV, ALT, HGT IN METRES  
DIST IN KILOMETRES  
BRG ARE MAG  
VAR 2° W



**REQUIRED:**  
1. RNAV 1 GNSS.  
2. ATS SURVEILLANCE.

**NOTES:**  
1. MAX IAS 465 km/h BELOW FL100.  
2. DIST 12 NM (TRACK MILE) FM THR RWY 11L MAX IAS 370 km/h.  
3. DIST 5 NM (TRACK MILE) FM THR RWY 11L MAX IAS 300 km/h.



SEE THE NEXT PAGES FOR CODING DATA.

106°00'E

21° 30' N

20° 30' N

HA NOI FIR

VIENTIANE FIR