

**STANDARD ARRIVAL - INSTRUMENT (STAR) – ICAO (OVERLAY TO RADAR VECTOR PATTERN)**

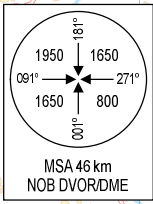
TRANSITION ALTITUDE  
2750 m

TMC: 125.1 PRI  
126.575 SRY  
ARR: 121.0 PRI  
120.075 SRY  
TWR: 118.4 PRI  
118.9 SRY

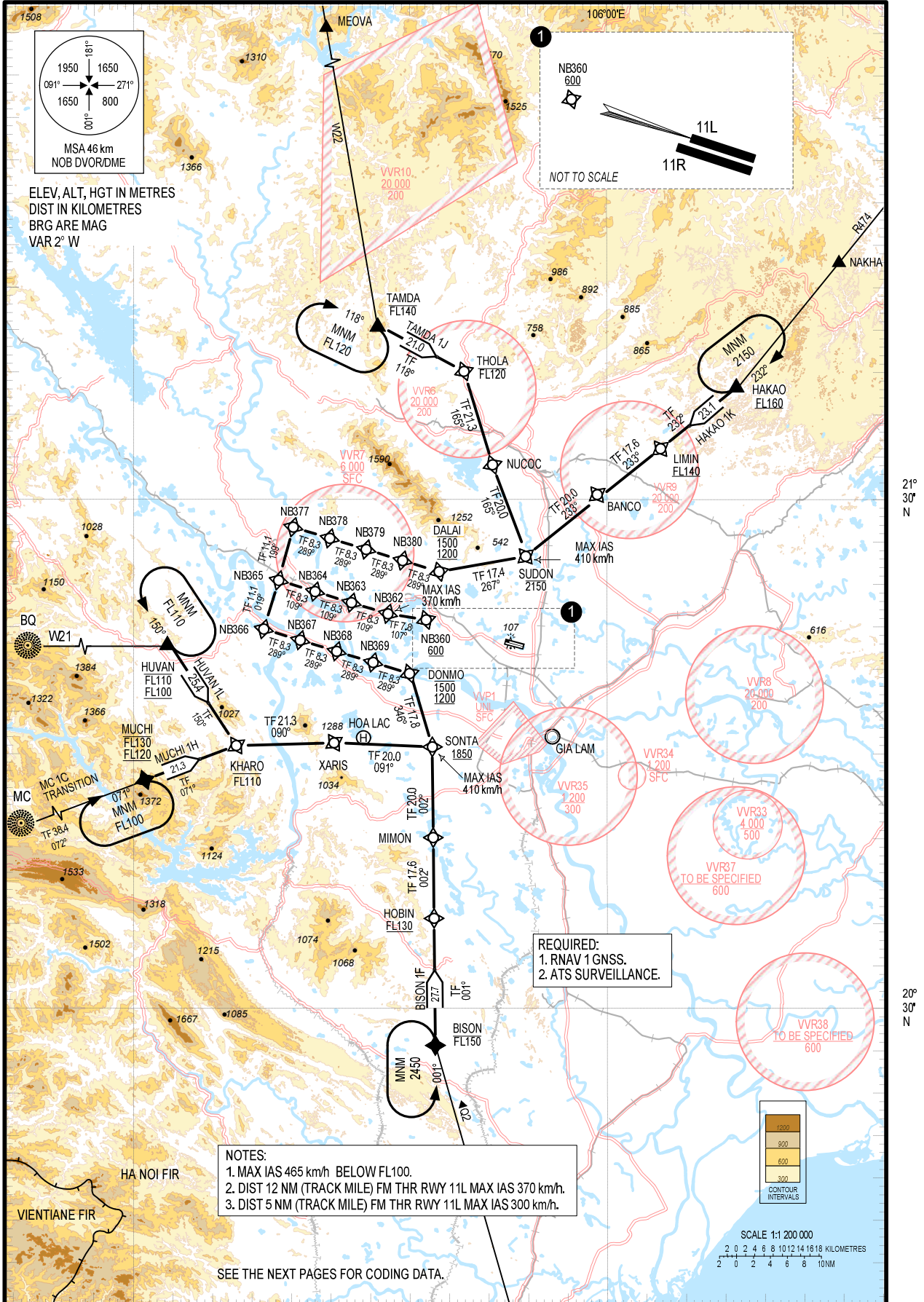
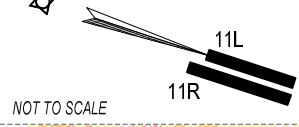
**HA NOI/NOI BAI INTL (VNB)  
RNAV RWY 11L  
TAMDA 1J, HAKAO 1K,  
BISON 1F, MUCHI 1H, HUVAN 1L**

105°00'E

106°00'E



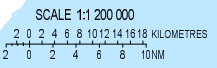
ELEV. ALT, HGT IN METRES  
DIST IN KILOMETRES  
BRG ARE MAG  
VAR 2° W



REQUIRED:  
1. RNAV 1 GNSS.  
2. ATS SURVEILLANCE.

NOTES:  
1. MAX IAS 465 km/h BELOW FL100.  
2. DIST 12 NM (TRACK MILE) FM THR RWY 11L MAX IAS 370 km/h.  
3. DIST 5 NM (TRACK MILE) FM THR RWY 11L MAX IAS 300 km/h.

SEE THE NEXT PAGES FOR CODING DATA.



21° 30' N

20° 30' N