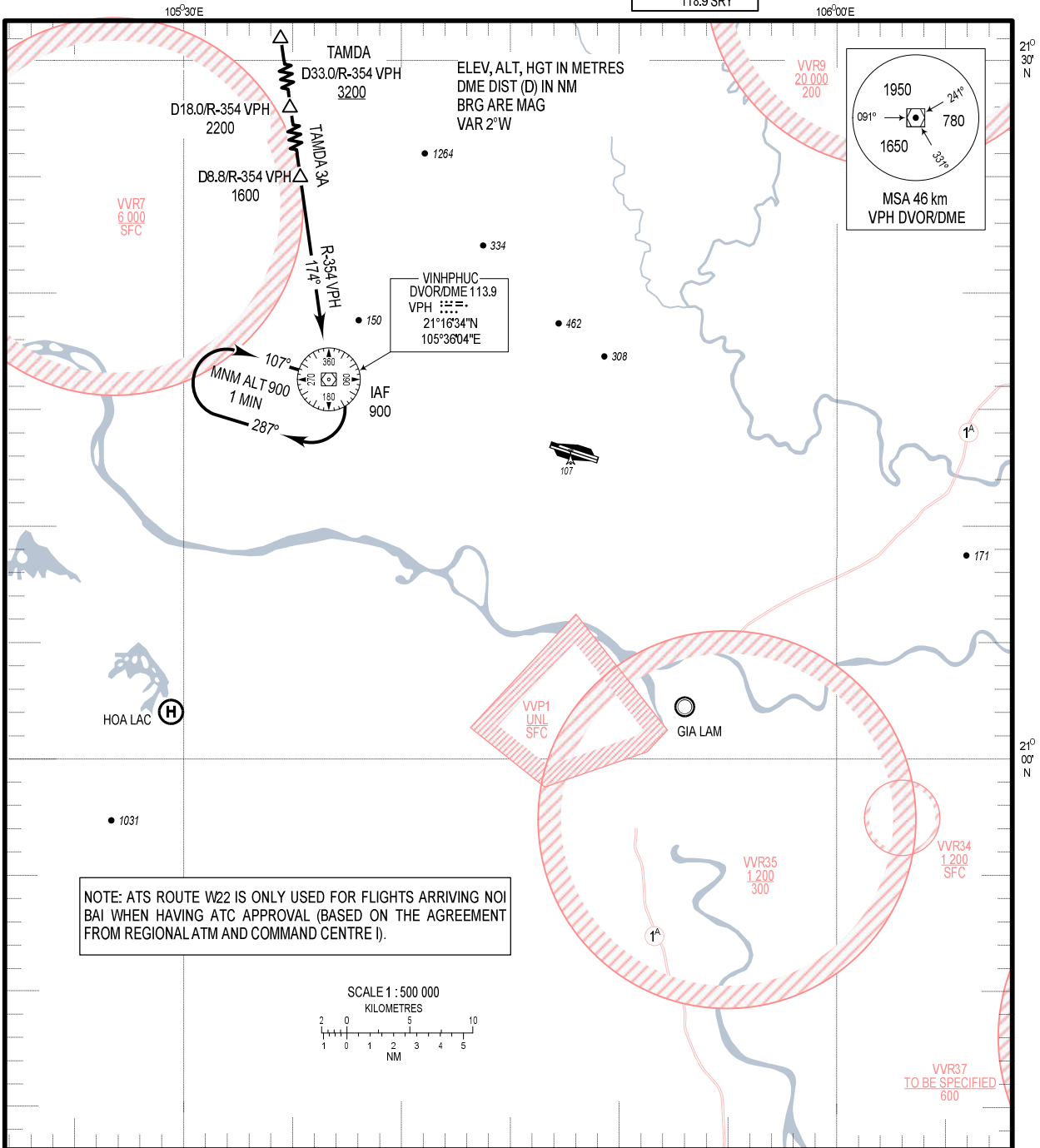


STANDARD ARRIVAL CHART-  
INSTRUMENT (STAR) - ICAO

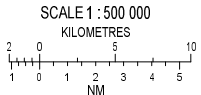
TRANSITION ALTITUDE  
2750 m

TMC: 125.1 PRI  
126.575 SRY  
ARR: 121.0 PRI  
120.075 SRY  
TWR: 118.4 PRI  
118.9 SRY

HA NOI/NOI BAI INTL (VVNB)  
RWY 11L/R  
TAMDA 3A



NOTE: ATS ROUTE W22 IS ONLY USED FOR FLIGHTS ARRIVING NOI BAI WHEN HAVING ATC APPROVAL (BASED ON THE AGREEMENT FROM REGIONAL ATM AND COMMAND CENTRE I).



RWY 11L/R

TAMDA THREE ALPHA ARRIVAL (TAMDA 3A): FROM TAMDA AT 3200 m OR ABOVE, FLY ON R-354 VPH TO D18.0/R-354 VPH AT 2200 m, TO D8.8/R-354 VPH AT 1600 m, CONTINUE TO VPH VOR/DME AT 900 m.