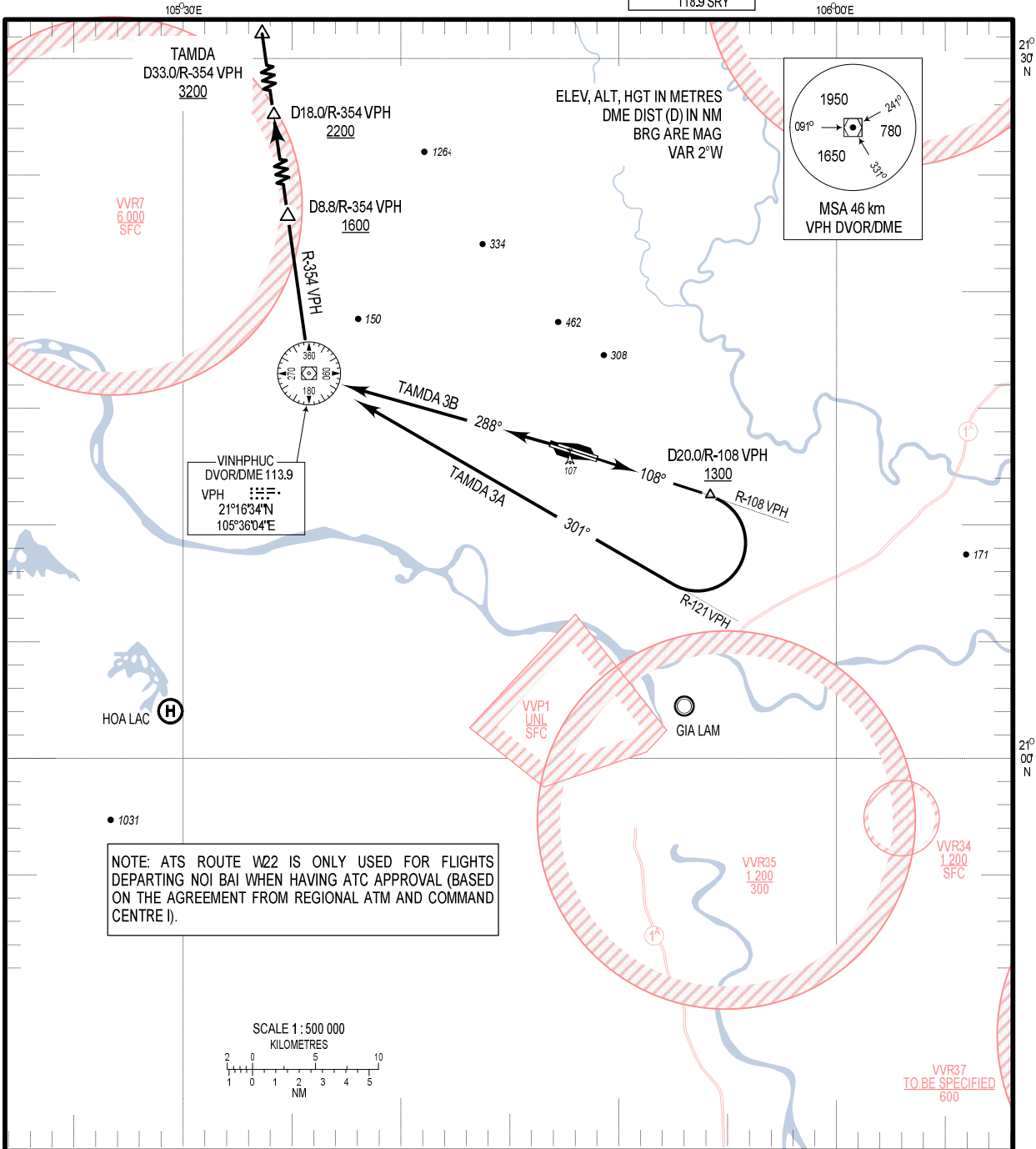


**STANDARD DEPARTURE CHART -
INSTRUMENT (SID) - ICAO**

TRANSITION ALTITUDE
2750 m

TMC: 125.1 PRI
126.575 SRY
ARR: 121.0 PRI
120.075 SRY
TWR: 118.4 PRI
118.9 SRY

**HA NOI/ NOI BAI INTL (VNVB)
RWY 11/LR, 29/LR
TAMDA 3A, TAMDA 3B**



RWY 11/LR

TAMDA THREE ALPHA DEPARTURE (TAMDA 3A): AFTER DEPARTURE, MAINTAIN RWY HDG TO INTERCEPT R-108 VPH TO D20.0/R-108 VPH AT 1300 m OR ABOVE, TURN RIGHT FOLLOW R-121 VPH TO VPH DVOR/DME, TURN RIGHT TO INTERCEPT R-354 VPH TO D8.8/R-354 VPH AT 1600 m OR ABOVE, CONTINUE TO D18.0/R-354 VPH AT 2200 m OR ABOVE, TO TAMDA AT 3200 m OR ABOVE.

RWY 29/LR

TAMDA THREE BRAVO DEPARTURE (TAMDA 3B): AFTER DEPARTURE, MAINTAIN RWY HDG TO INTERCEPT R-108 VPH TO VPH DVOR/DME, TURN RIGHT TO INTERCEPT R-354 VPH TO D8.8/R-354 VPH AT 1600 m OR ABOVE, CONTINUE TO D18.0/R-354 VPH AT 2200 m OR ABOVE, TO TAMDA AT 3200 m OR ABOVE.