

**STANDARD DEPARTURE CHART-
INSTRUMENT (SID) - ICAO**

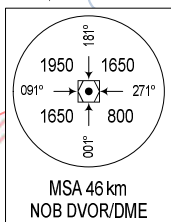
**TRANSITION ALTITUDE
2750 m**

TMC: 125.1 PRI
126.575 SRY
ARR: 121.0 PRI
120.075 SRY
TWR: 118.4 PRI
118.9 SRY

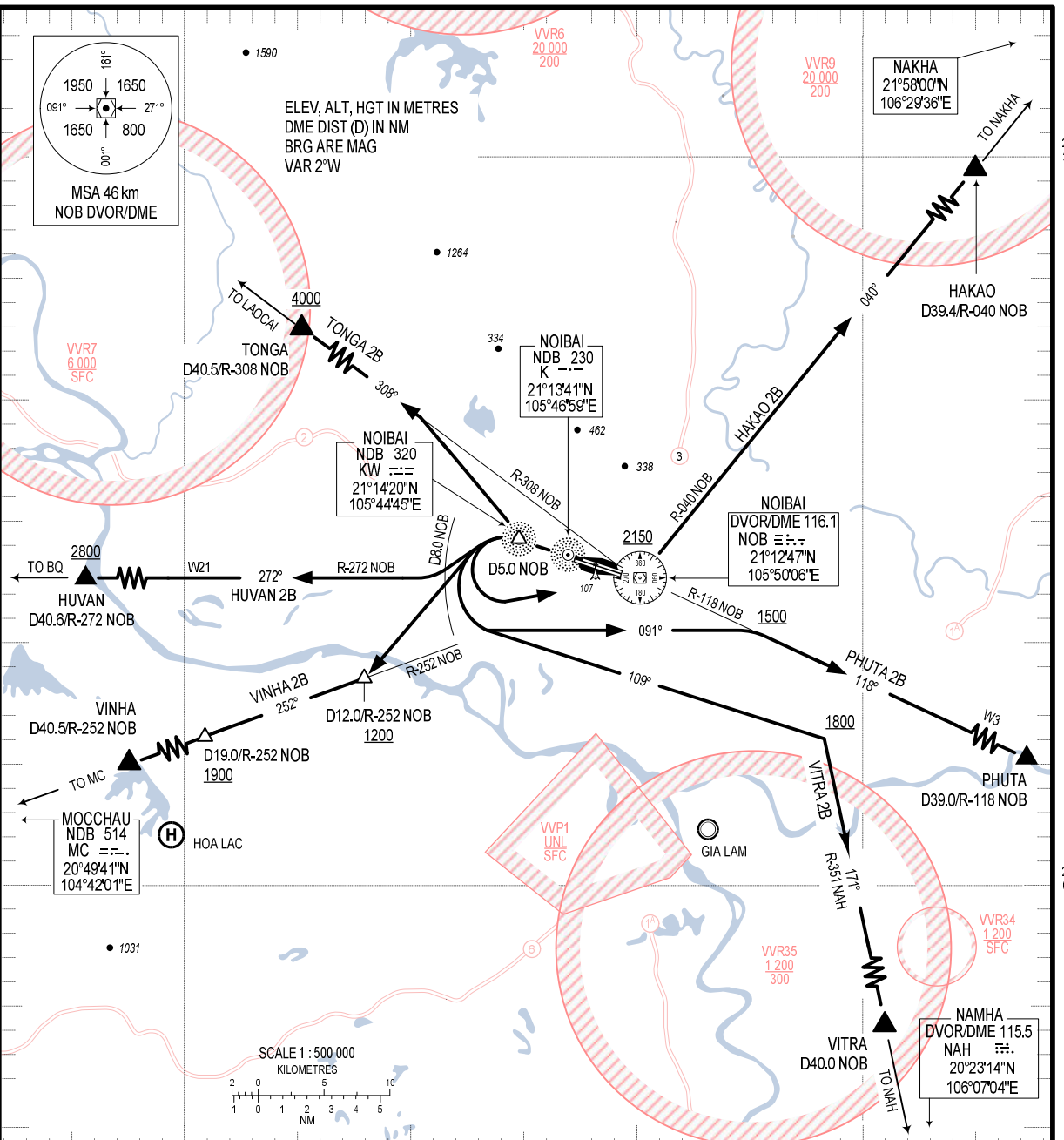
**HA NOI/ NOI BAI INTL (VNVB)
RWY 29L/R
HAKAO 2B, VITRA 2B, VINHA 2B
TONGA 2B, HUVAN 2B, PHUTA 2B**

105°30'N

106°00'N



ELEV, ALT, HGT IN METRES
DME DIST (D) IN NM
BRG ARE MAG
VAR 2°W



105°30'E

RWY 29L/R

106°00'E

1. HAKAO TWO BRAVO DEPARTURE (HAKAO 2B): AFTER DEPARTURE, MAINTAIN RWY HDG TO D5.0 NOB, TURN LEFT WITHIN D8.0 NOB TO NOB DVORDME AT 2150m OR ABOVE, TURN LEFT TO INTERCEPT R474 ON R-040 NOB TO HAKAO, CONTINUE TO NAKHA.
2. VITRA TWO BRAVO DEPARTURE (VITRA 2B): AFTER DEPARTURE, MAINTAIN RWY HDG TO D5.0 NOB, TURN LEFT ON TRACK 109° WITHIN D8.0 NOB TO INTERCEPT R-351 NAH AT 1800m OR ABOVE TO VITRA, CONTINUE TO NAH VOR/DME.
3. VINHA TWO BRAVO DEPARTURE (VINHA 2B): AFTER DEPARTURE, MAINTAIN RWY HDG TO D5.0 NOB, TURN LEFT TO INTERCEPT D12.0/R-252 NOB AT 1200 m OR ABOVE, FOLLOW R-252 NOB TO VINHA, CONTINUE TO MC NDB. (NOTE: REACHING D19.0/R-252 NOB AT 1900 m OR ABOVE).
4. TONGA TWO BRAVO DEPARTURE (TONGA 2B): AFTER DEPARTURE, MAINTAIN RWY HDG TO D5.0 NOB, TURN RIGHT TO INTERCEPT W6 ON R-308 NOB TO TONGA AT 4000 m OR ABOVE, CONTINUE TO LAOCAI (MNM PDG 6%).
5. HUVAN TWO BRAVO DEPARTURE (HUVAN 2B): AFTER DEPARTURE, MAINTAIN RWY HDG TO D5.0 NOB, TURN LEFT TO INTERCEPT R-272 NOB (W21) TO HUVAN AT 2800m OR ABOVE, CONTINUE TO BQ NDB.
6. PHUTA TWO BRAVO DEPARTURE (PHUTA 2B): AFTER DEPARTURE, MAINTAIN RWY HDG TO D5.0 NOB, TURN LEFT ON TRACK 091° WITHIN D8.0 NOB, INTERCEPT R-118 NOB (W3) AT 1500 m OR ABOVE TO PHUTA. (NOTE: ONLY USED IN CASE VNVB AND VVCI ARE ALTERNATE AERODROMES FOR EACH OTHER).