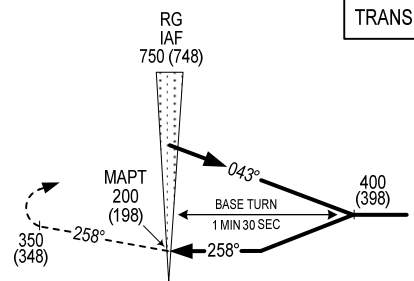
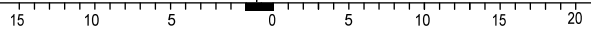


MISSED APPROACH:
 MAINTAIN FINAL APPROACH TRACK PASSING
 RG NDB, CLIMB ON HEADING 258° TO 350M,
 TURN RIGHT TO RG NDB AT 750M, JOIN
 HOLDING PATTERN OR FOLLOW RACH GIA
 TWR INSTRUCTIONS.

TRANSITION ALTITUDE 2750



**AD ELEV 2M
KM FROM TO THR RWY 26**



OCA (H)	C
STRAIGHT-IN APPROACH	200 (198)
CIRCLING	260 (258)