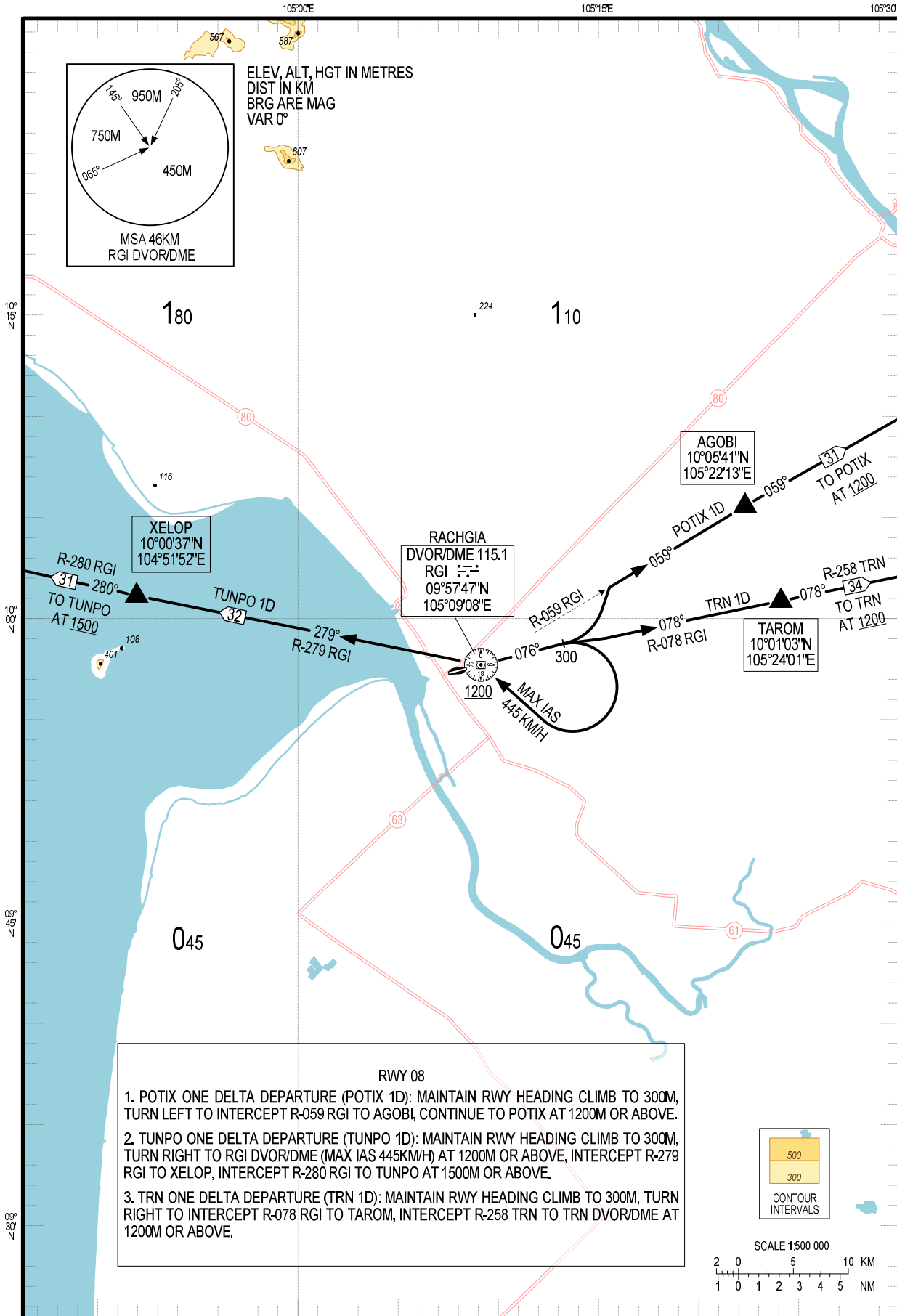
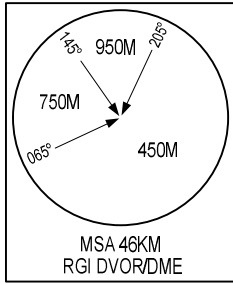


ELEV, ALT, HGT IN METRES
DIST IN KM
BRG ARE MAG
VAR 0°



- RWY 08
1. POTIX ONE DELTA DEPARTURE (POTIX 1D): MAINTAIN RWY HEADING CLIMB TO 300M, TURN LEFT TO INTERCEPT R-059 RGI TO AGOBI, CONTINUE TO POTIX AT 1200M OR ABOVE.
 2. TUNPO ONE DELTA DEPARTURE (TUNPO 1D): MAINTAIN RWY HEADING CLIMB TO 300M, TURN RIGHT TO RGI DVOR/DME (MAX IAS 445KM/H) AT 1200M OR ABOVE, INTERCEPT R-279 RGI TO XELOP, INTERCEPT R-280 RGI TO TUNPO AT 1500M OR ABOVE.
 3. TRN ONE DELTA DEPARTURE (TRN 1D): MAINTAIN RWY HEADING CLIMB TO 300M, TURN RIGHT TO INTERCEPT R-078 RGI TO TAROM, INTERCEPT R-258 TRN TO TRN DVOR/DME AT 1200M OR ABOVE.

