

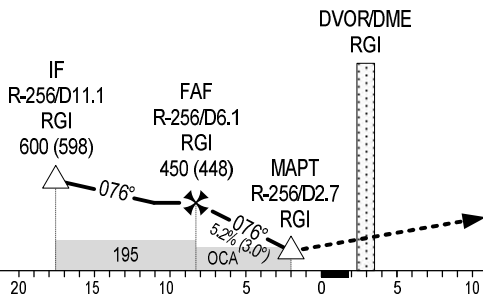
MISSED APPROACH

MAINTAIN FINAL APPROACH TRACK PASSING RGI DVOR/DME, CLIMB TO 350M ON R-076 RGI, TURN LEFT TO RGI DVOR/DME AT 750M. JOIN HOLDING PATTERN OR FOLLOW RACH GIA TWR INSTRUCTIONS.

TRANSITION ALTITUDE 2750

AD ELEV 2M

KM TO/FROM THR RWY 08



OCA (H)	A	B	C	GS	KMH	150	200	250	300
STRAIGHT-IN APPROACH		120 (118)		FAF-MAPT 6.3KM	MIN:S	2:31	1:53	1:31	1:16
CIRCLING		260 (258)		RATE OF DESCENT 5.2% (3.0°)	M/S	2.2	2.9	3.6	4.4