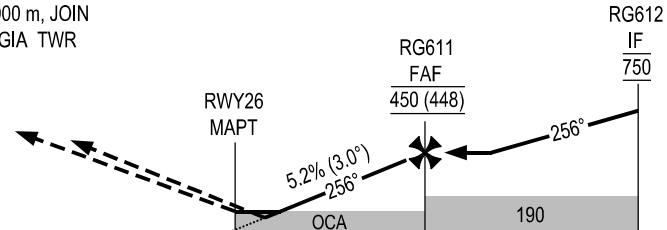


KILOMETRES TO NEXT WPT	RWY26	1.3	2.0	4.0	6.0	8.0	8.3
ALT		85	120	225	330	435	450

**MISSED APPROACH:**  
CLIMB ON COURSE 256° TO RG671, TURN LEFT TO RG674 (MAX IAS 410 km/h) AND RG826 AT 900 m, JOIN HOLDING PATTERN OR FOLLOW RACH GIA TWR INSTRUCTIONS.

**TRANSITION ALTITUDE 2750**



KILOMETRES TO/FM THR RWY 26	12	6	TCH 15.25	0	6	12	18
-----------------------------	----	---	-----------	---	---	----	----

OCA (H)	A	B	C
LNAV/VNAV	85 (83)		
LNAV	115 (113)		
CIRCLING	260 (258)		

GS	km/h	150	200	250	300	350
RATE OF DESCENT 5.2% (3.0°)	m/s	2.2	2.9	3.6	4.4	5.1