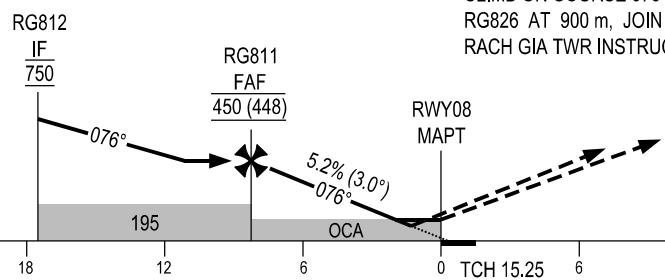


KILOMETRES TO NEXT WPT	RWY08	1.3	2.0	4.0	6.0	8.0	8.3
ALT		85	120	225	330	435	450

**TRANSITION ALTITUDE 2750**

**MISSED APPROACH:**  
CLIMB ON COURSE 076° TO 300 m, TURN RIGHT DIRECT TO RG826 AT 900 m, JOIN HOLDING PATTERN OR FOLLOW RACH GIA TWR INSTRUCTIONS.



OCA (H)	A	B	C
LNAV/VNAV	85 (83)		
LNAV	120 (118)		
CIRCLING	260 (258)		

GS	km/h	150	200	250	300	350
RATE OF DESCENT 5.2% (3.0°)	m/s	2.2	2.9	3.6	4.4	5.1

SEE THE NEXT PAGES FOR CODING DATA.