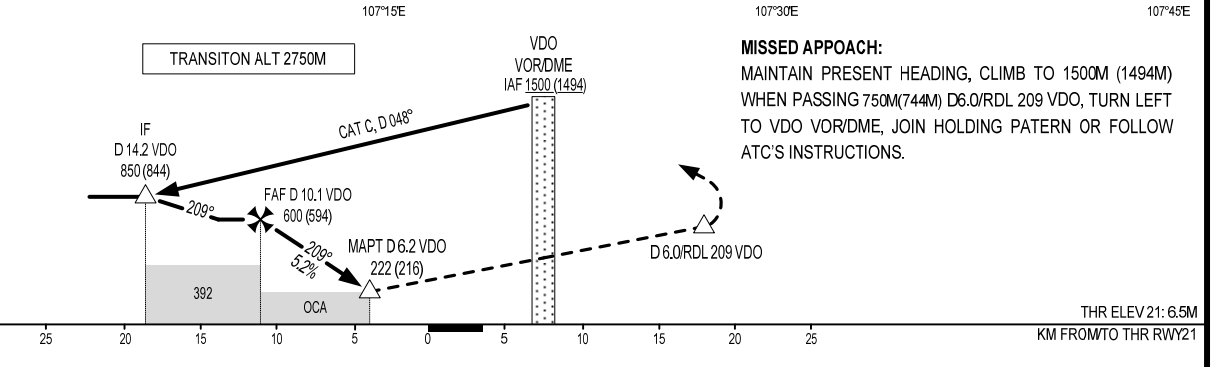


NOTE: FINAL APCH TRACK IS OFFSET 1° FROM EXTENDED RUNWAY CENTERLINE

20°55'23" N 106°59'38" E  
20°54'30" N 107°08'54" E  
20°49'20" N 107°10'10" E

500M GND/WATER  
SIGHTSEEING AREA OVER HALONG BAY



**MISSED APPROACH:**  
MAINTAIN PRESENT HEADING, CLIMB TO 1500M (1494M) WHEN PASSING 750M(744M) D 6.0/RDL 209 VDO, TURN LEFT TO VDO VOR/DME, JOIN HOLDING PATTERN OR FOLLOW ATC'S INSTRUCTIONS.

THR ELEV 21: 6.5M  
KM FROM TO THR RWY 21

OCA (H)	C	D
STRAIGHT-IN APCH	222 (216)	
CIRCLING	600 (592)	

FAF - MAPT 3.9 NM (7223M)

GS	KMH	100	150	200	250	300	350
TIME	MINVS	4:20	2:53	2:10	1:44	1:26	1:14
RATE OF DESCENT FAF - MAPT (5.2%)	M/S	1.5	2.2	2.9	3.6	4.4	5.1

CIRCLING ONLY IN DAYTIME AND NOT BELOW VMC.