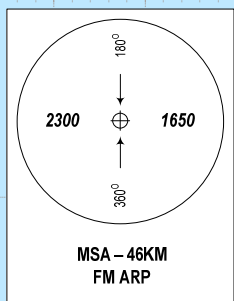


109°00'E

109°30'E

BRG ARE MAG
BRG IN PARENTHESIS ARE TRUE
ELEV. ALT AND HGT IN METRES
DIST IN KM
VAR 1°W

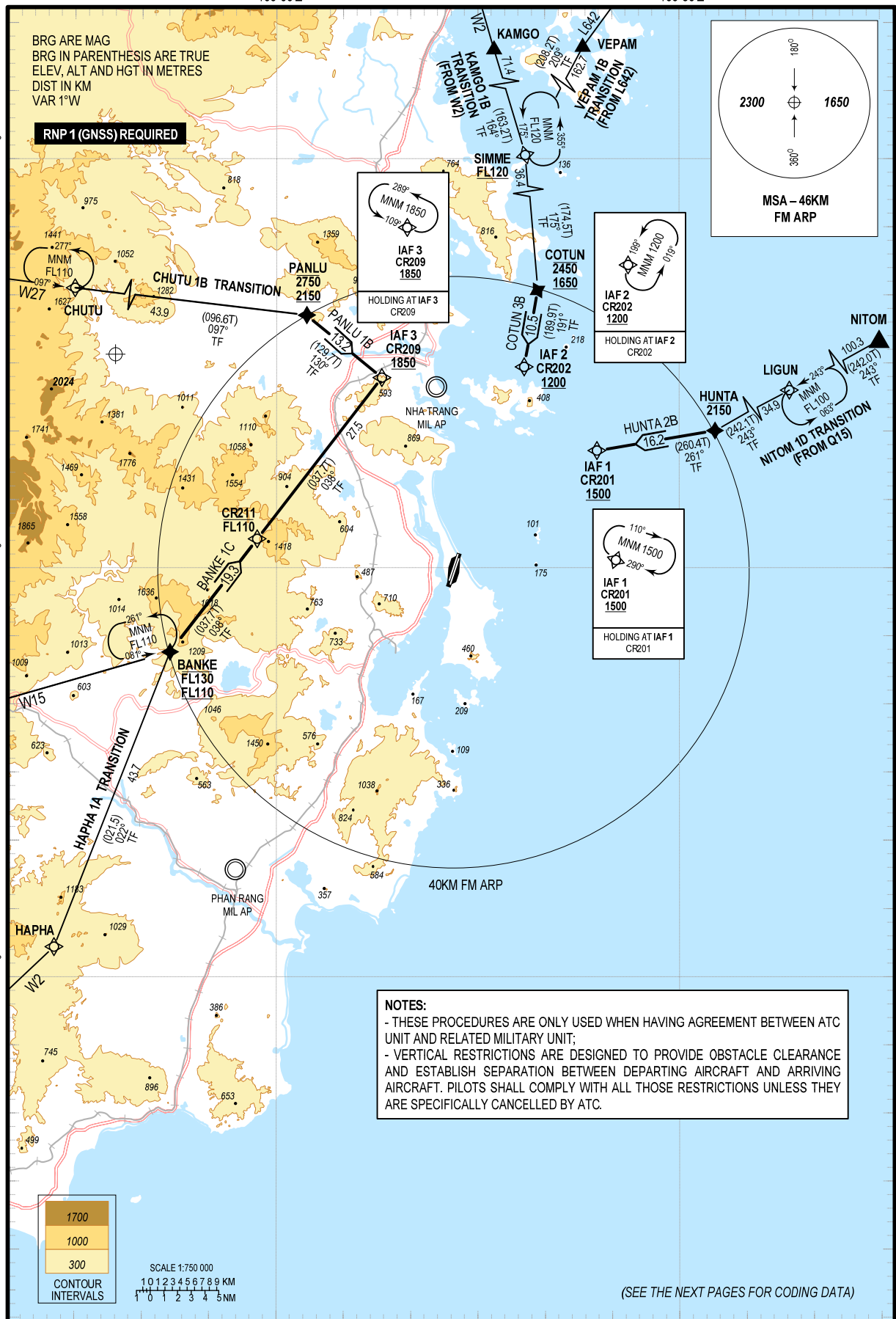
RNP 1 (GNSS) REQUIRED



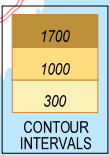
12° 30' N

12° 00' N

11° 30' N



NOTES:
- THESE PROCEDURES ARE ONLY USED WHEN HAVING AGREEMENT BETWEEN ATC UNIT AND RELATED MILITARY UNIT;
- VERTICAL RESTRICTIONS ARE DESIGNED TO PROVIDE OBSTACLE CLEARANCE AND ESTABLISH SEPARATION BETWEEN DEPARTING AIRCRAFT AND ARRIVING AIRCRAFT. PILOTS SHALL COMPLY WITH ALL THOSE RESTRICTIONS UNLESS THEY ARE SPECIFICALLY CANCELLED BY ATC.



(SEE THE NEXT PAGES FOR CODING DATA)