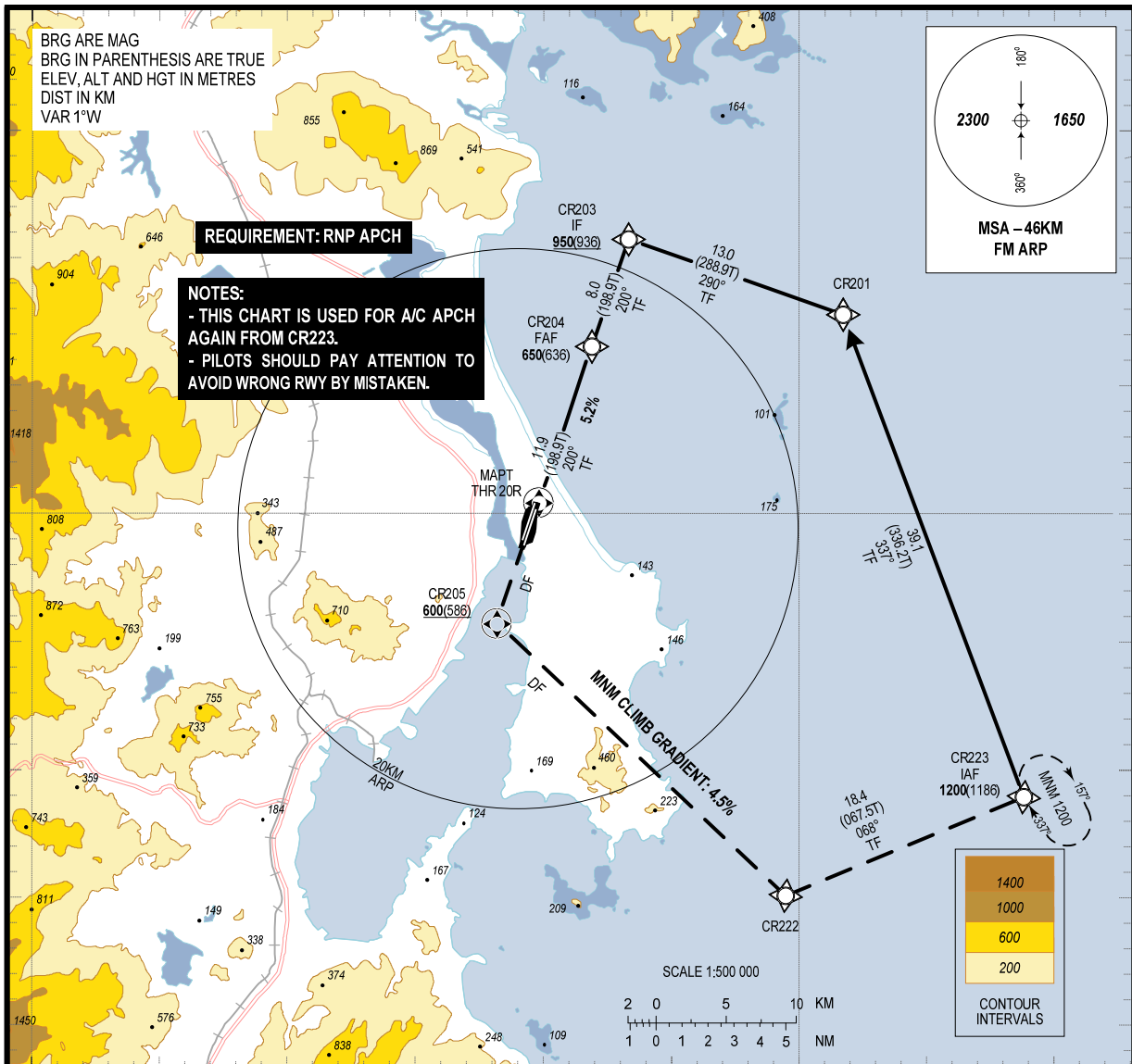


109°00'E

109°20'E



12° 00' N

12° 00' N

109°00'E

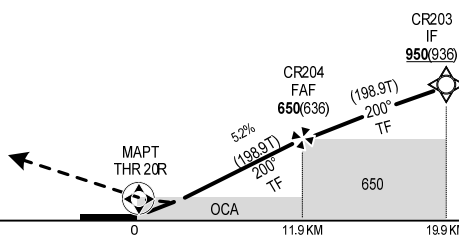
109°20'E

MISSED APPROACH:

PROCEED TO CR205, CR222, CR223 AT 1200M(1186M) TO JOIN HOLDING PATTERN OR FOLLOW ATC INSTRUCTIONS.
(MINIMUM CLIMB GRADIENT OF 4.5% UNTIL 1200M)

TRANSITION LEVEL: FL100

THR ELEV RWY 20R: 14.1M
KM TO/FROM THR RWY 20R



FAF - MAPT: 11.9 KM

OCA (H)	A	B	C	D
STRAIGHT IN APPROACH (LNAV)	183 (169)			
CIRCLING	NOT BE ALLOWED			

GS	KWH	150	200	250	300
TIME	MIN:S	4:46	3:34	2:51	2:23
RATE OF DESCENT	M/S	2.2	2.9	3.6	4.3

DISTANCE (KM)	RWY 20R	3	4	6	8	10	11.9
ALT		183	238	342	447	552	650

(SEE THE NEXT PAGES FOR CODING DATA)