

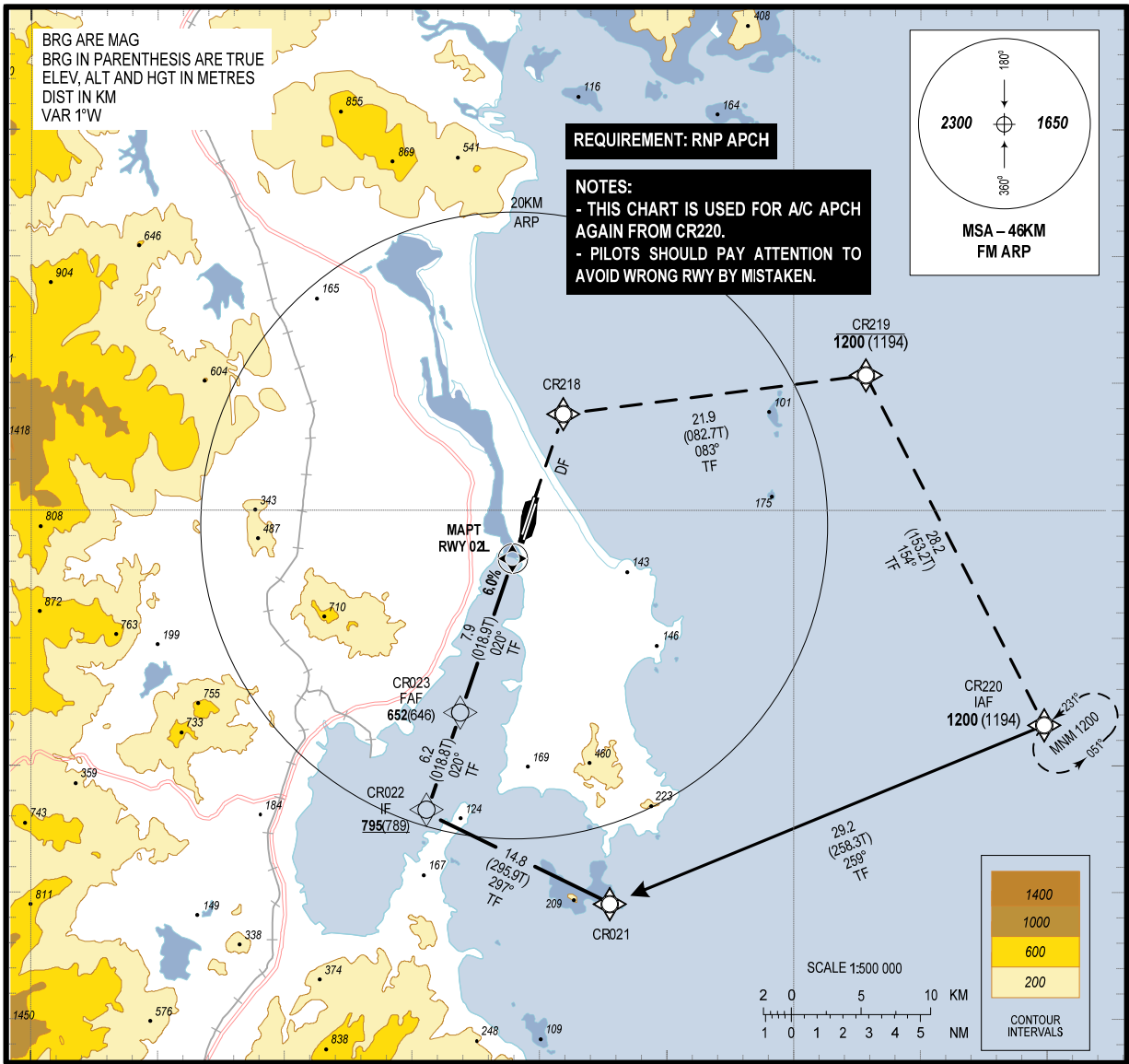
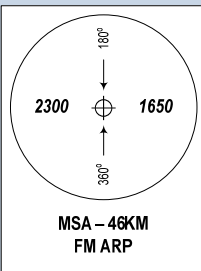
109°00'E

109°20'E

BRG ARE MAG  
BRG IN PARENTHESIS ARE TRUE  
ELEV, ALT AND HGT IN METRES  
DIST IN KM  
VAR 1°W

**REQUIREMENT: RNP APCH**

**NOTES:**  
- THIS CHART IS USED FOR A/C APCH AGAIN FROM CR220.  
- PILOTS SHOULD PAY ATTENTION TO AVOID WRONG RWY BY MISTAKEN.

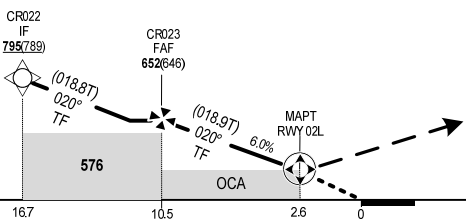


109°00'E

109°20'E

**MISSED APPROACH:**  
PROCEED TO CR218, CR219, CR220 AT 1200M(1194M)  
TO JOIN HOLDING PATTERN AT CR220 OR FOLLOW  
ATC INSTRUCTIONS.

**TRANSITION LEVEL: FL100**



THR ELEV RWY 02L: 6.0M  
KM TO/FROM THR RWY 02L

FAF - MAPT: 7.9KM

GS	KMH	150	200	250	300
TIME	MIN:SEC	3:10	2:22	1:54	1:35
RATE OF DESCENT	M/S	2.5	3.3	4.1	5.0

<b>OCA/H</b>	A	B	C	D
STRAIGHT IN APPROACH (LNAV)	180 (174)			
CIRCLING	NOT BE ALLOWED			

DISTANCE	RWY 02L	2.6	4	6	8	10.5
ALT		180	260	380	500	652

(SEE THE NEXT PAGES FOR CODING DATA)