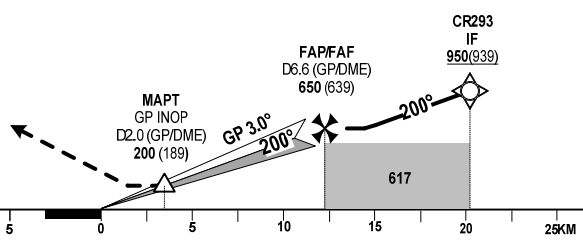


MISSED APPROACH:
DIRECT TO CR295, CR222, CR223 AT 1200M(1189M) TO JOIN
HOLDING PATTERN OR FOLLOW ATC'S INSTRUCTIONS.
(MNM CLIMB GRADIENT OF 4.5% UNTIL REACHING 1200M)

TRANSITION ALT: 2750M

ILS RDH: 15.2M
THR ELEV: 10.5M



OCA/H				
AC CAT	A	B	C	D
CAT I	112 (101)	115 (104)	118 (107)	121 (110)
GP INOP	200 (189)			
CIRCLING	NOT AUTHORIZED			

FAF - MAPT: 4.6NM

GS	KM/H	150	200	250	300
TIME	MIN:S	3:30	3:36	2:06	1:42
RATE OF DESCENT	M/S	2.2	2.9	3.6	4.3

(SEE THE NEXT PAGES FOR CODING DATA)