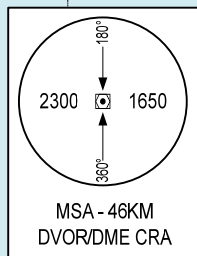
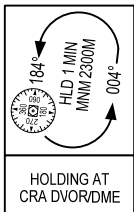


109°00'E

109°30'E

ELEV, HGT, ALT IN METRES
BRG ARE MAG
VAR 1°W



NHA TRANG
MIL AP

LOCALIZER
ICR: 110.7

CAM RANH
DVOR/DME 116.5
CRA
11°59'40"N
109°13'12"E

MAPT
GP INOP
D2.2 (GP/DME)
250(244)

FAP/FAF
D5.9 (GP/DME)
675(669)

D7.4 (GP/DME)
675(669)

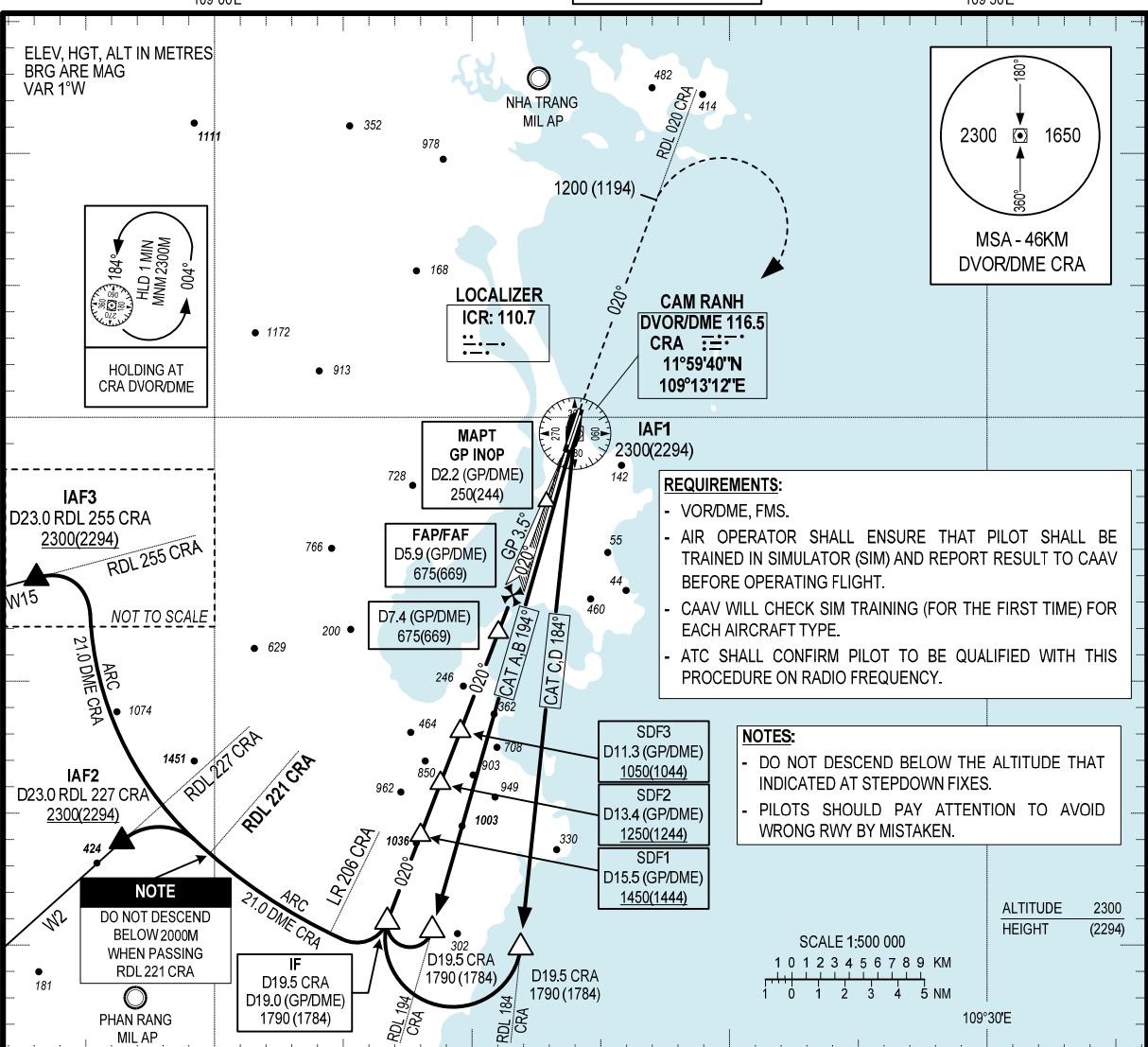
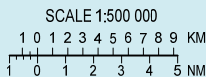
REQUIREMENTS:

- VOR/DME, FMS.
- AIR OPERATOR SHALL ENSURE THAT PILOT SHALL BE TRAINED IN SIMULATOR (SIM) AND REPORT RESULT TO CAAV BEFORE OPERATING FLIGHT.
- CAAV WILL CHECK SIM TRAINING (FOR THE FIRST TIME) FOR EACH AIRCRAFT TYPE.
- ATC SHALL CONFIRM PILOT TO BE QUALIFIED WITH THIS PROCEDURE ON RADIO FREQUENCY.

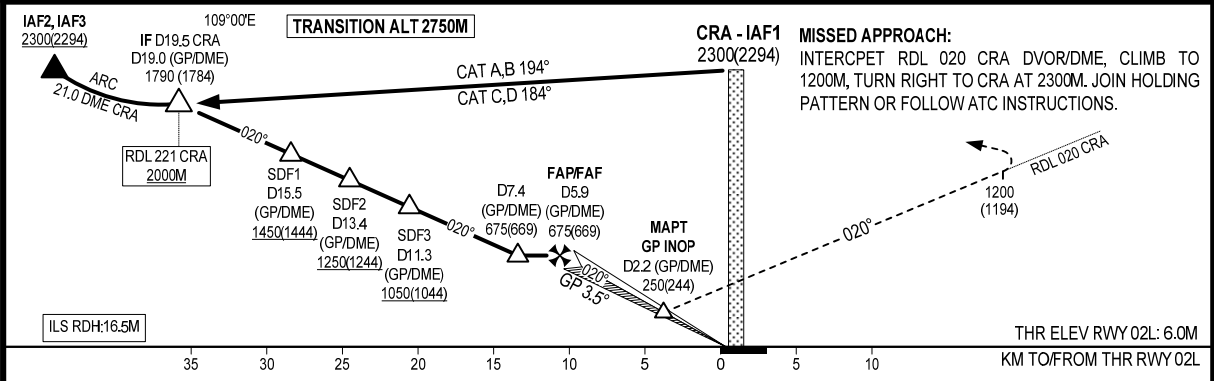
NOTES:

- DO NOT DESCEND BELOW THE ALTITUDE THAT INDICATED AT STEPDOWN FIXES.
- PILOTS SHOULD PAY ATTENTION TO AVOID WRONG RWY BY MISTAKEN.

ALTITUDE 2300
HEIGHT (2294)



NOTE
DO NOT DESCEND
BELOW 2000M
WHEN PASSING
RDL 221 CRA



| OCA(H) | | A | B | C | D |
|---------------------|---------|----------|--------|----------|---------|
| STRAIGHT-IN APCH | CAT I | 96(90) | 99(93) | 102(96) | 105(99) |
| | GP-INOP | 250(244) | | | |
| CIRCLING | | 400(386) | | 550(536) | |

FAF – MAPT: 6.9KM

| GS | KMH | 150 | 200 | 250 | 300 | 350 |
|----------------------|------|------|------|------|------|------|
| TIME | MINS | 2:46 | 2:04 | 1:40 | 1:23 | 1:11 |
| RATE OF DESCENT 3.5° | M/S | 2.5 | 3.4 | 4.2 | 5.1 | 5.9 |

CIRCLING IS ONLY IN THE EAST OF RWY