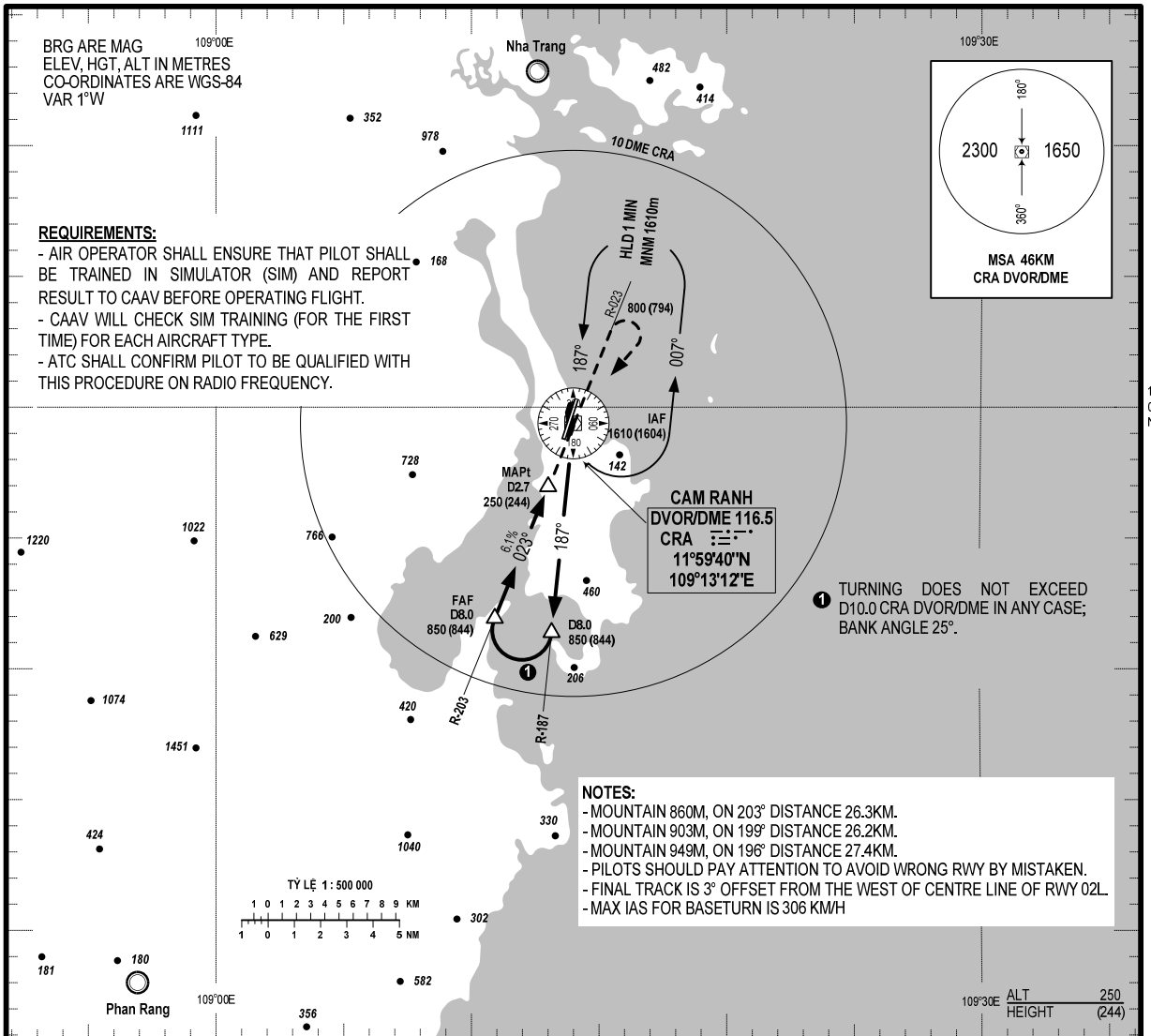
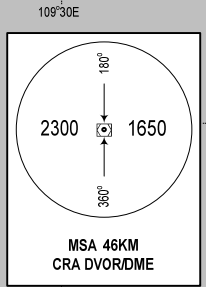


BRG ARE MAG
ELEV, HGT, ALT IN METRES
CO-ORDINATES ARE WGS-84
VAR 1°W

REQUIREMENTS:

- AIR OPERATOR SHALL ENSURE THAT PILOT SHALL BE TRAINED IN SIMULATOR (SIM) AND REPORT RESULT TO CAAV BEFORE OPERATING FLIGHT.
- CAAV WILL CHECK SIM TRAINING (FOR THE FIRST TIME) FOR EACH AIRCRAFT TYPE.
- ATC SHALL CONFIRM PILOT TO BE QUALIFIED WITH THIS PROCEDURE ON RADIO FREQUENCY.



TURNING DOES NOT EXCEED D10.0 CRA DVOR/DME IN ANY CASE; BANK ANGLE 25°.

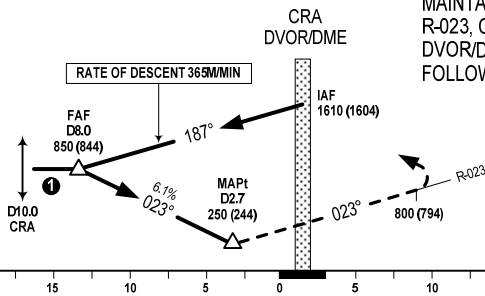
NOTES:

- MOUNTAIN 860M, ON 203° DISTANCE 26.3KM.
- MOUNTAIN 903M, ON 199° DISTANCE 26.2KM.
- MOUNTAIN 949M, ON 196° DISTANCE 27.4KM.
- PILOTS SHOULD PAY ATTENTION TO AVOID WRONG RWY BY MISTAKEN.
- FINAL TRACK IS 3° OFFSET FROM THE WEST OF CENTRE LINE OF RWY 02L.
- MAX IAS FOR BASETURN IS 306 KM/H

TRANSITION ALT 2750M

MISSED APCH:

MAINTAIN PRESENT HEADING, PASSING CRA. ON R-023, CLIMB TO 800M(794M), TURN RIGHT TO CRA DVOR/DME AT 1610M, JOIN HOLDING PATTERN OR FOLLOW ATC'S INSTRUCTIONS.



THR ELEV RWY 02L: 6.0M
KM TO/FROM THR RWY 02L

DIST FAF - MAPt = 9.8KM

GS	KMH	100	150	200	250
TIME	MIN:S	5:53	3:55	2:56	2:21
RATE OF DESCENT	M/S	1.7	2.5	3.4	5.1

DME	7.0	6.0	5.0	4.0	3.0
HEIGHT	(780)	(660)	(540)	(420)	(300)

OCA/H	
A/C CAT	C
STRAIGHT-IN APCH	250 (244)
CIRCLING	380 (366)

CIRCLING IS ONLY IN THE EAST OF RWY