

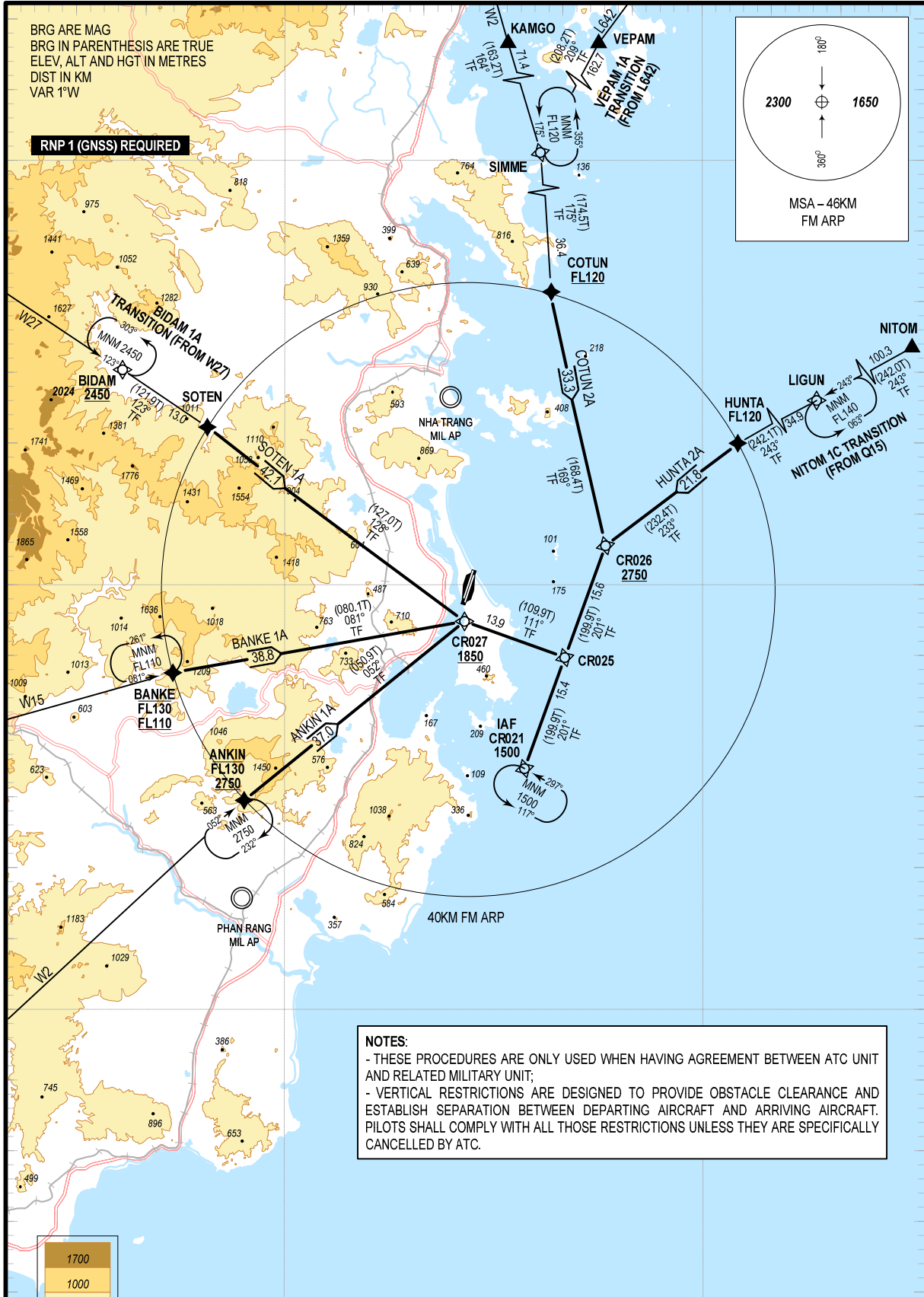
109°00'E

109°30'E

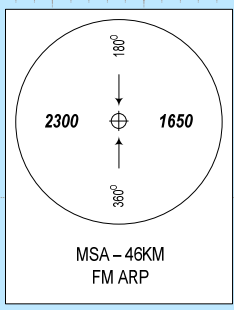
12° 30' N

12° 00' N

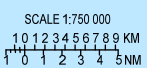
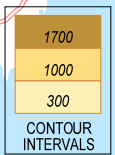
11° 30' N



RNP 1 (GNSS) REQUIRED



NOTES:
- THESE PROCEDURES ARE ONLY USED WHEN HAVING AGREEMENT BETWEEN ATC UNIT AND RELATED MILITARY UNIT;
- VERTICAL RESTRICTIONS ARE DESIGNED TO PROVIDE OBSTACLE CLEARANCE AND ESTABLISH SEPARATION BETWEEN DEPARTING AIRCRAFT AND ARRIVING AIRCRAFT. PILOTS SHALL COMPLY WITH ALL THOSE RESTRICTIONS UNLESS THEY ARE SPECIFICALLY CANCELLED BY ATC.



(SEE THE NEXT PAGES FOR CODING DATA)