

TRANSITION ALTITUDE
2750M

TWR: 118.2 PRI
124.35 SRY
APP: 127.9 PRI
124.35 SRY

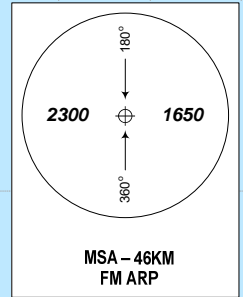
KHANH HOA/CAM RANH (VVC)
RNP RWY 20L/R
ANKIN 1B, BANKE 1B,
KOPOM 1A, NIHOA 1B, SOTEN 1B

109°00'E

109°30'E

BRG ARE MAG
BRG IN PARENTHESIS ARE TRUE
ELEV, ALT AND HGT IN METRES
DIST IN KM
VAR 1°W

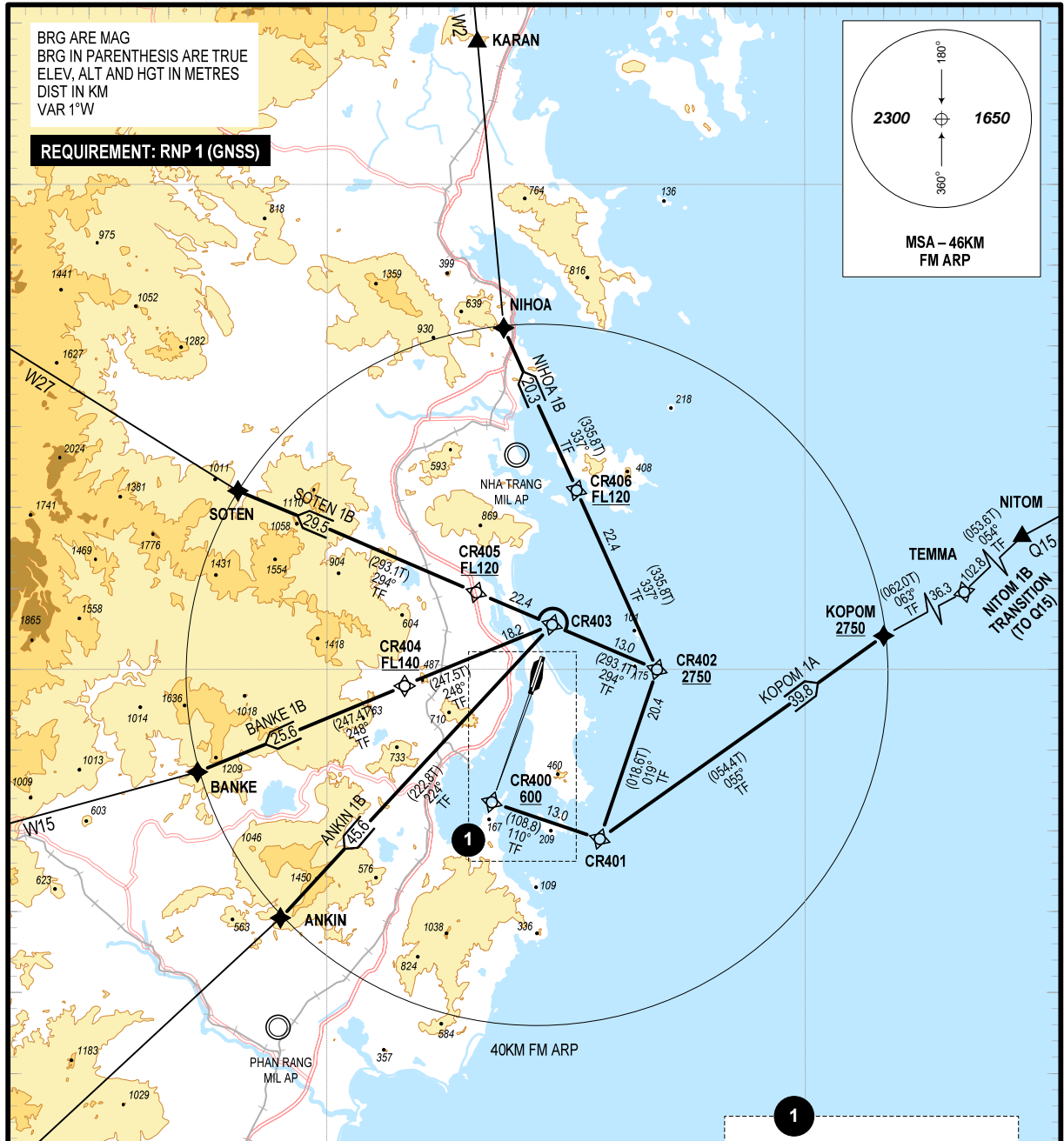
REQUIREMENT: RNP 1 (GNSS)



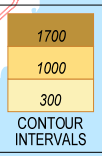
12° 30' N

12° 00' N

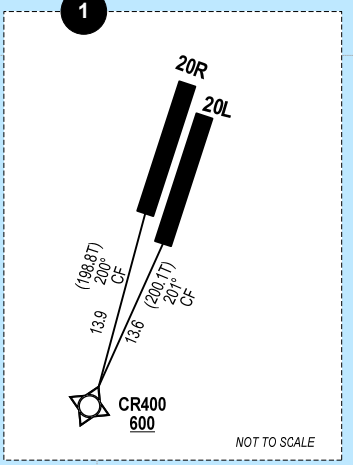
11° 30' N



NOTES:
 - NIHOA 1B: MINIMUM PDG OF 5.5% UNTIL REACHING FL120;
 - KOPOM 1A: MINIMUM PDG OF 5.5% UNTIL REACHING 2750M;
 - ANKIN 1B: MINIMUM PDG OF 5.5% UNTIL REACHING FL140;
 - BANKE 1B: MINIMUM PDG OF 5.5% UNTIL REACHING FL140;
 - SOTEN 1B: MINIMUM PDG OF 5.5% UNTIL REACHING FL120.
 - VERTICAL RESTRICTIONS ARE DESIGNED TO PROVIDE OBSTACLE CLEARANCE AND ESTABLISH SEPARATION BETWEEN DEPARTING AIRCRAFT AND ARRIVING AIRCRAFT. PILOTS SHALL COMPLY WITH ALL THOSE RESTRICTIONS UNLESS THEY ARE SPECIFICALLY CANCELLED BY ATC.



SCALE 1:750 000
1 0 1 2 3 4 5 6 7 8 9 KM
1 1 0 1 2 3 4 5 NM



(SEE THE NEXT PAGES FOR CODING DATA)