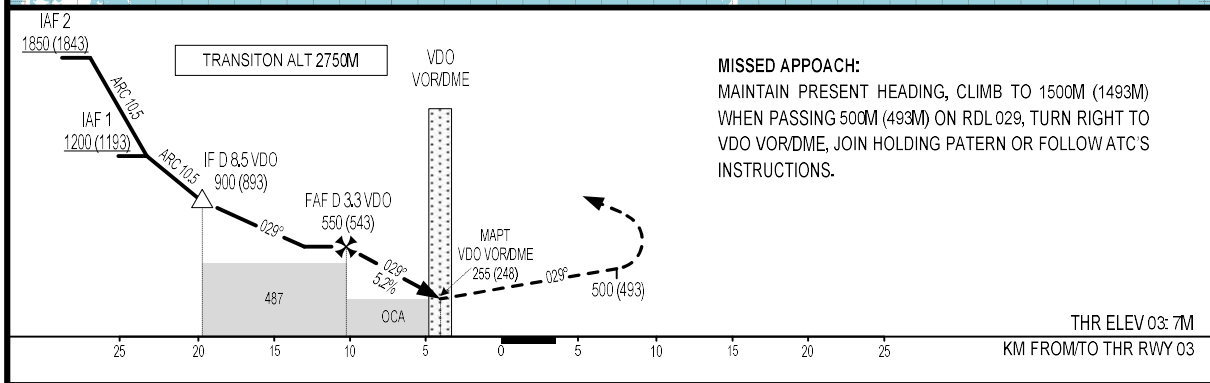
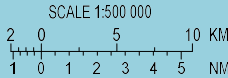


NOTE: FINAL APCH TRACK IS OFFSET 1' FROM EXTENDED RUNWAY CENTER LINE



MISSED APPROACH:
MAINTAIN PRESENT HEADING, CLIMB TO 1500M (1493M) WHEN PASSING 500M (493M) ON RDL 029, TURN RIGHT TO VDO VOR/DME, JOIN HOLDING PATTERN OR FOLLOW ATC'S INSTRUCTIONS.

THR ELEV 03: 7M
KM FROM/TO THR RWY 03

FAF - MAPT 3.3 NM (6112M)

OCA (H)	A	B	C	D
STRAIGHT-IN APCH	255 (248)			
CIRCLING	480 (472)		600 (592)	

GS	KMH	100	150	200	250	300	300
TIME	MIN/S	3:40	2:26	1:50	1:28	1:13	1:03
RATE OF DESCENT FAF - MAPT (5.2%)	M/S	1.5	2.2	2.9	3.6	4.4	5.1

CIRCLING ONLY IN DAYTIME AND NOT BELOW VMC.

CHANGE: CORRECT TRANSLATION " RWY 03 "