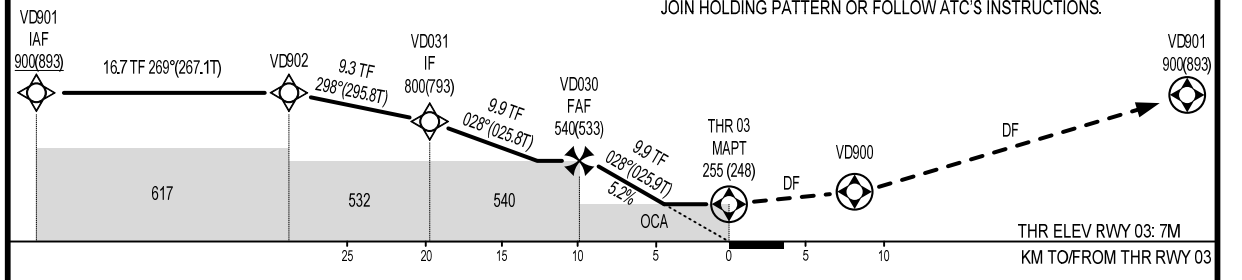


TRANSITION ALTITUDE 2750M

**MISS APPROACH**

CLIMB UNTIL PASSING VD900, TURN RIGHT TO VD901 REACH 900M,  
JOIN HOLDING PATTERN OR FOLLOW ATC'S INSTRUCTIONS.



KM TO NEXT WPT	RWY 03	4.4	6	8	9.9
ALTITUDE		255	336	441	541

OCA (H)	A	B	C	D
LNAV	255 (248)			
CIRCLING	480 (472)		600 (592)	

GS	KMH	100	150	200	250	300	350
RATE OF DESCENT FAF-MAPT 5.2%	M/S	1.5	2.2	2.9	3.6	4.4	5.1