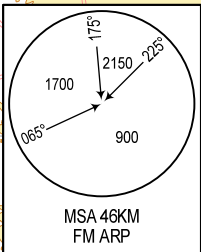
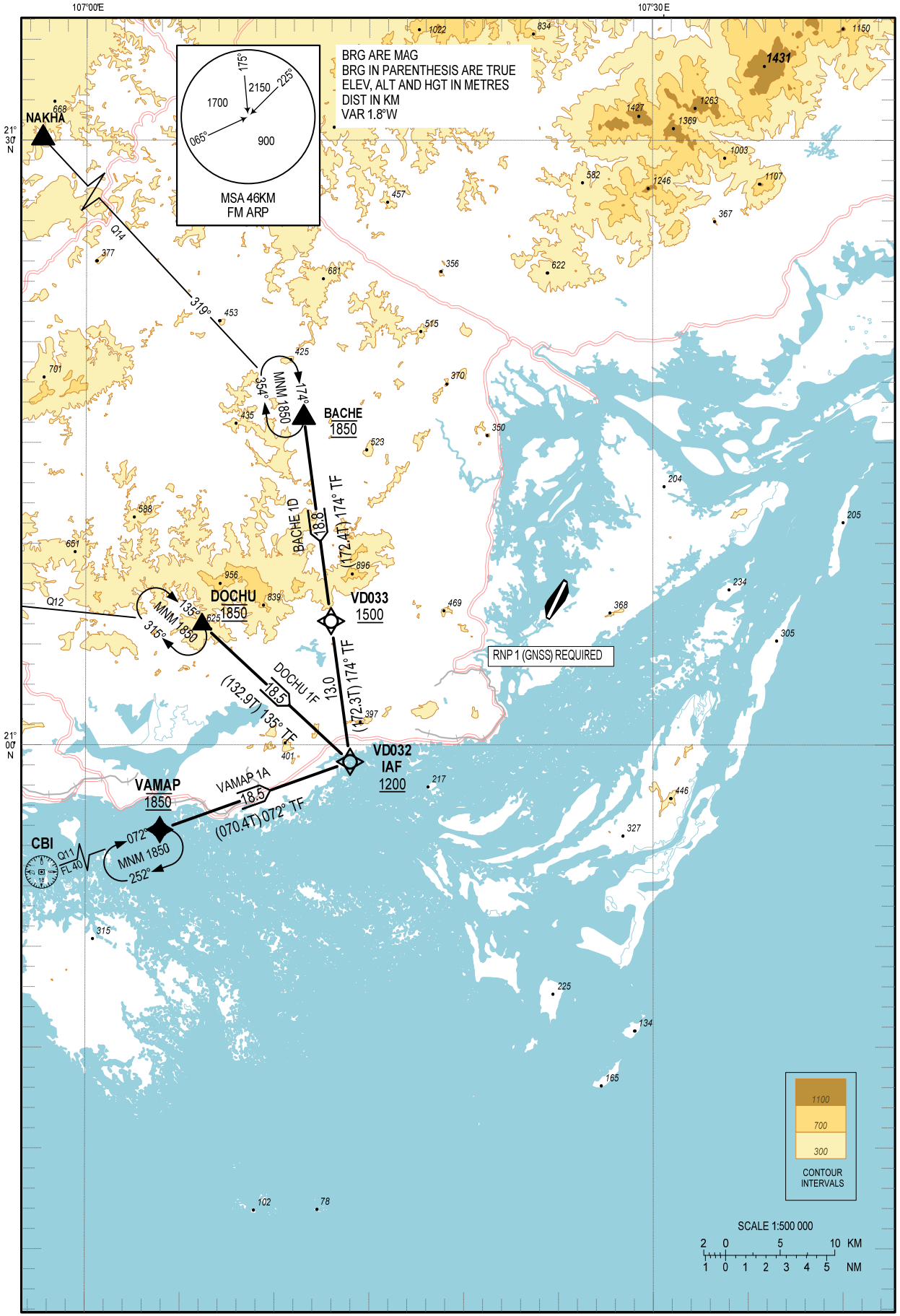


STANDARD ARRIVAL CHART -  
INSTRUMENT (STAR) - ICAO

TRANSITION ALTITUDE  
2750M

TWR  
PRI: 118.1 MHz  
SRY: 118.85 MHz

QUANG NINH/VAN DON INTL (VVVD)  
RNP RWY03  
VAMAP 1A, DOCHU 1F, BACHE 1D



BRG ARE MAG  
BRG IN PARENTHESIS ARE TRUE  
ELEV, ALT AND HGT IN METRES  
DIST IN KM  
VAR 1.8°W

RNP 1 (GNSS) REQUIRED

