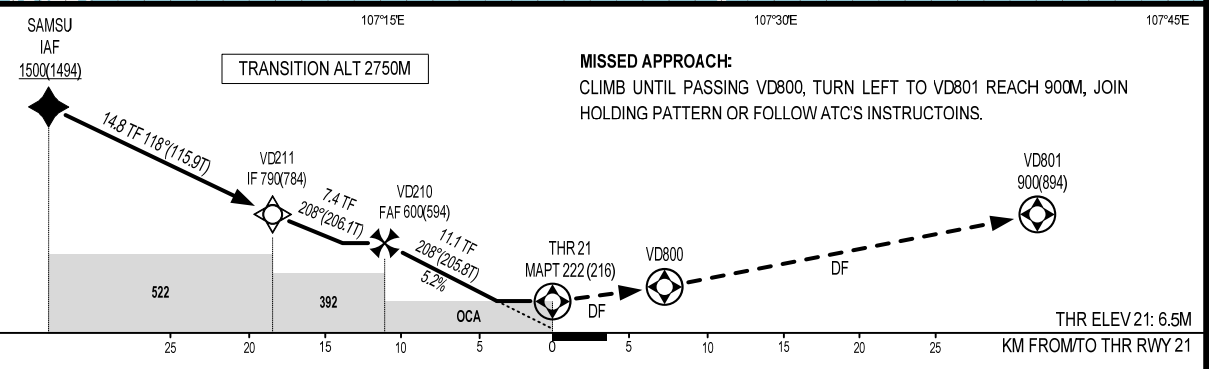
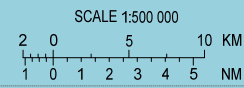
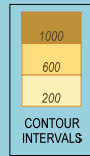


RNP APCH REQUIRED

NOTE: AT SAMSU AND VD801, THE SAME HOLDING ALT SIMULTANEOUSLY ARE NOT PERMITTED.

BRG ARE MAG
BRG IN PARENTHESIS ARE TRUE
ELEV, HGT AND ALT IN METRES
DIST IN KM
VAR 1.8°W



MISSED APPROACH:
CLIMB UNTIL PASSING VD800, TURN LEFT TO VD801 REACH 900M, JOIN HOLDING PATTERN OR FOLLOW ATC'S INSTRUCTOINS.

KM TO NEXT WPT	RWY 21	3.8	4	6	8	10	11.1
ALTITUDE		222	231	336	441	546	600

OCA (H)	A	B	C	D
LNAV	222 (216)			
CIRCLING	480 (472)		600 (592)	

GS	KMH	100	150	200	250	300	350
RATE OF DESCENT FAF-MAPT (5.2%)	M/S	1.5	2.2	2.9	3.6	4.4	5.1