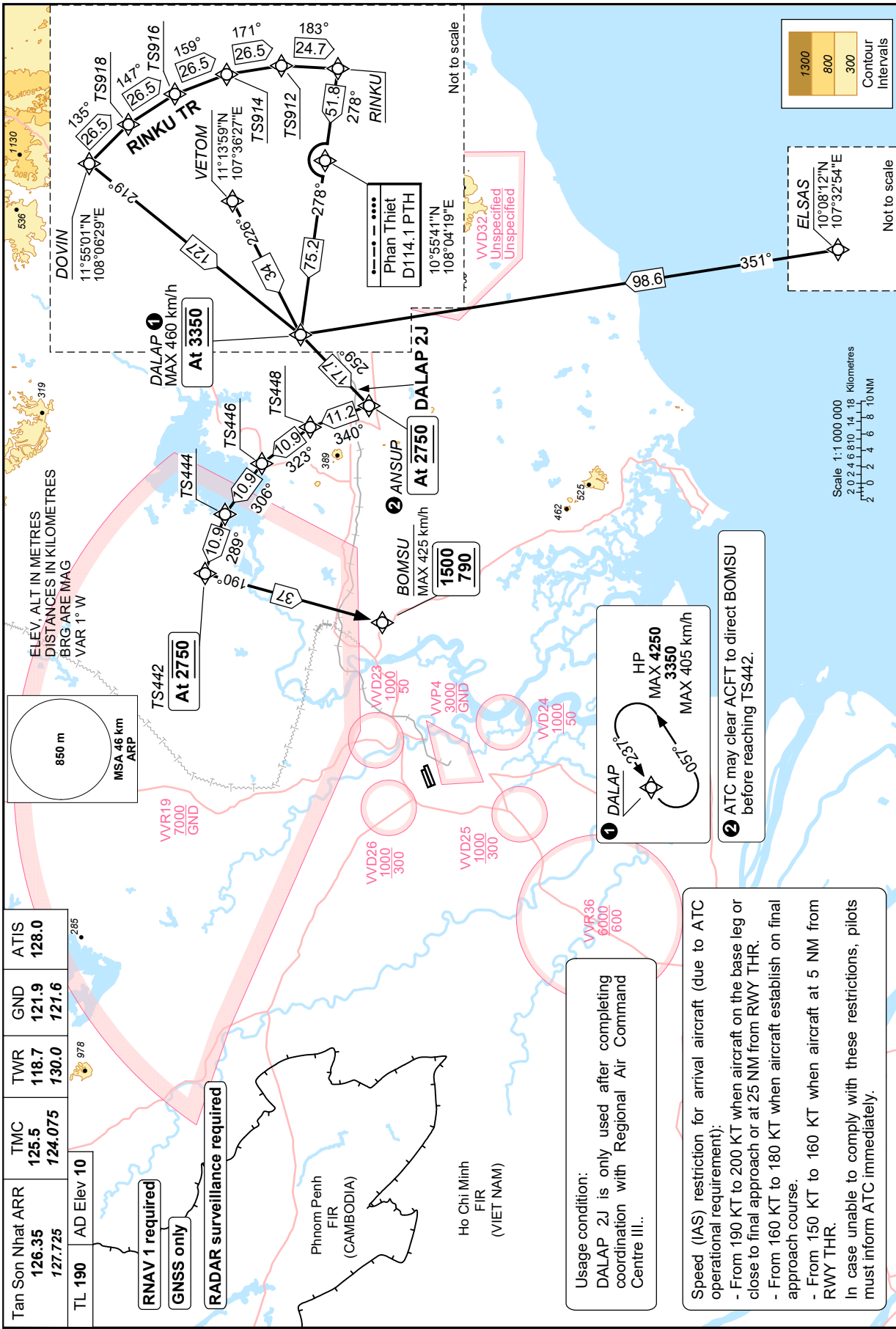


STANDARD ARRIVAL CHART – INSTRUMENT (STAR)

TRANSITION LVL FL190
TRANSITION ALT 5500 m

**HO CHI MINH/TAN SON NHAT INTL (VQVTS)
RNAV RWY 25L/R
DALAP 2J**

CHANGE: ADDITION OF SPEED RESTRICTION NOTES.



Tan Son Nhat ARR	TMC	TWR	GND	ATIS
126.35	125.5	118.7	121.9	128.0
127.725	124.075	130.0	121.6	
TL 190	AD Elev 10			

RNAV 1 required
GNS5 only
RADAR surveillance required

Phnom Penh FIR (CAMBODIA)
Ho Chi Minh FIR (VIET NAM)

Usage condition:
DALAP 2J is only used after completing coordination with Regional Air Command Centre III.

Speed (IAS) restriction for arrival aircraft (due to ATC operational requirement):

- From 190 KT to 200 KT when aircraft on the base leg or close to final approach or at 25 NM from RWY THR.
- From 160 KT to 180 KT when aircraft establish on final approach course.
- From 150 KT to 160 KT when aircraft at 5 NM from RWY THR.

In case unable to comply with these restrictions, pilots must inform ATC immediately.

1 DALAP 1
HP
MAX 4250
3350
MAX 405 km/h

2 ATC may clear ACFT to direct BOMSU before reaching TS442.

Scale 1:1 000 000
2 0 2 4 6 8 10
Kilometres
10 NM

1300
800
300
Contour
Intervals