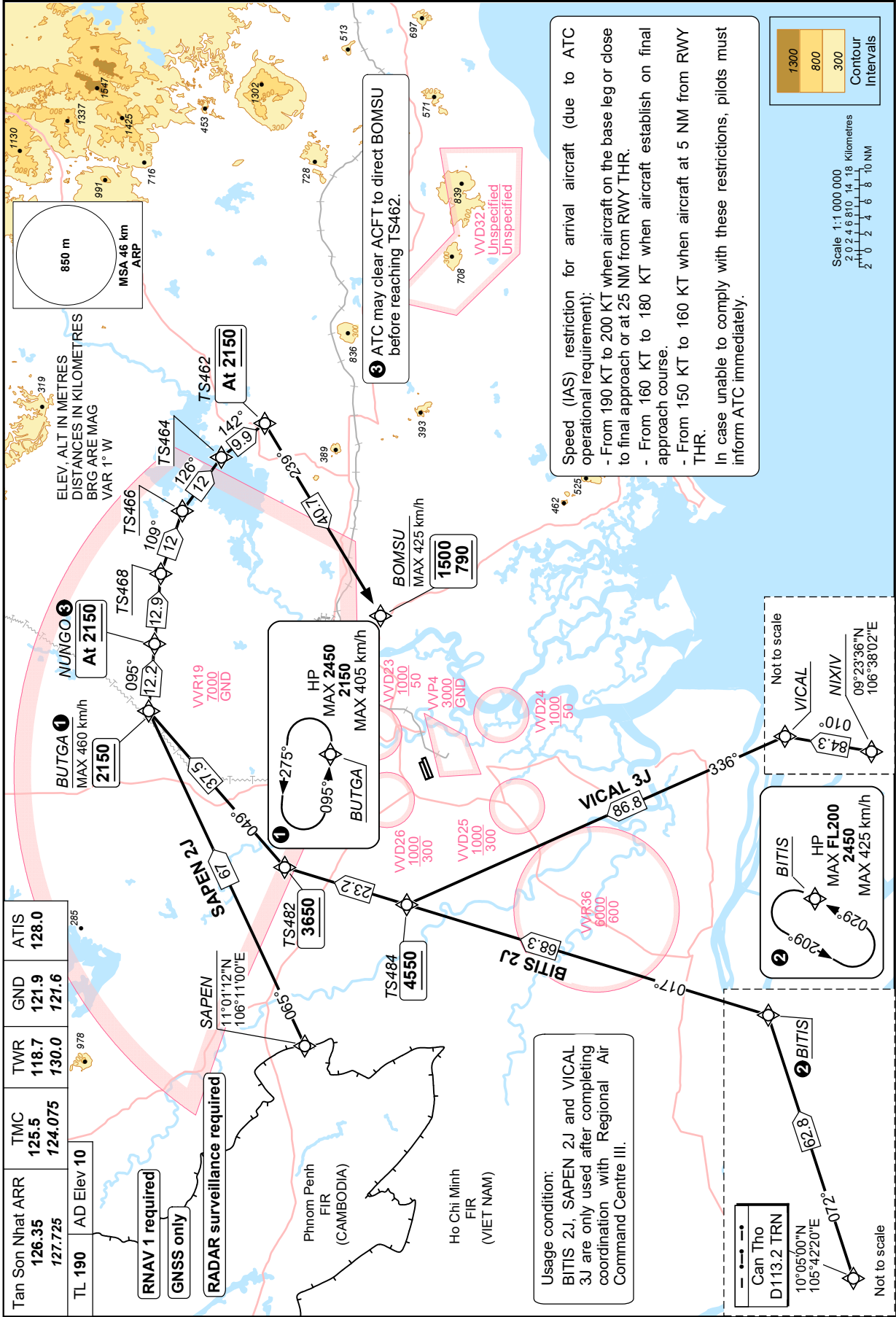


STANDARD ARRIVAL CHART - INSTRUMENT (STAR)

TRANSITION LVL FL190
TRANSITION ALT 5500 m

**HO CHI MINH/TAN SON NHAAT INTL (VTS)
RNAV RWY 25L/R
BITIS 2J SAPEN 2J
VICAL 3J**

CHANGE: ADDITION OF SPEED RESTRICTION NOTES.



Tan Son Nhat ARR	TMC	TWR	GND	ATIS
126.35	125.5	118.7	121.9	128.0
127.725	124.075	130.0	121.6	

TL 190 AD Elev 10
RNAV 1 required
GNSS only
RADAR surveillance required

SAPEN
 11°01'12"N
 106°11'00"E

Phnom Penh FIR (CAMBODIA)
 Ho Chi Minh FIR (VIET NAM)

Usage condition:
 BITIS 2J, SAPEN 2J and VICAL 3J are only used after completing coordination with Regional Air Command Centre III.

Can Tho
 D113.2 TRN
 10°05'00"N
 105°42'20"E

BITIS
 HP
 MAX FL200
 2450
 MAX 425 km/h

VICAL
 NIXIV
 09°23'36"N
 106°38'02"E

ATC may clear ACFT to direct BOMSU before reaching TS462.

Speed (IAS) restriction for arrival aircraft (due to ATC operational requirement):
 - From 190 KT to 200 KT when aircraft on the base leg or close to final approach or at 25 NM from RWY THR.
 - From 160 KT to 180 KT when aircraft establish on final approach course.
 - From 150 KT to 160 KT when aircraft at 5 NM from RWY THR.
 In case unable to comply with these restrictions, pilots must inform ATC immediately.

