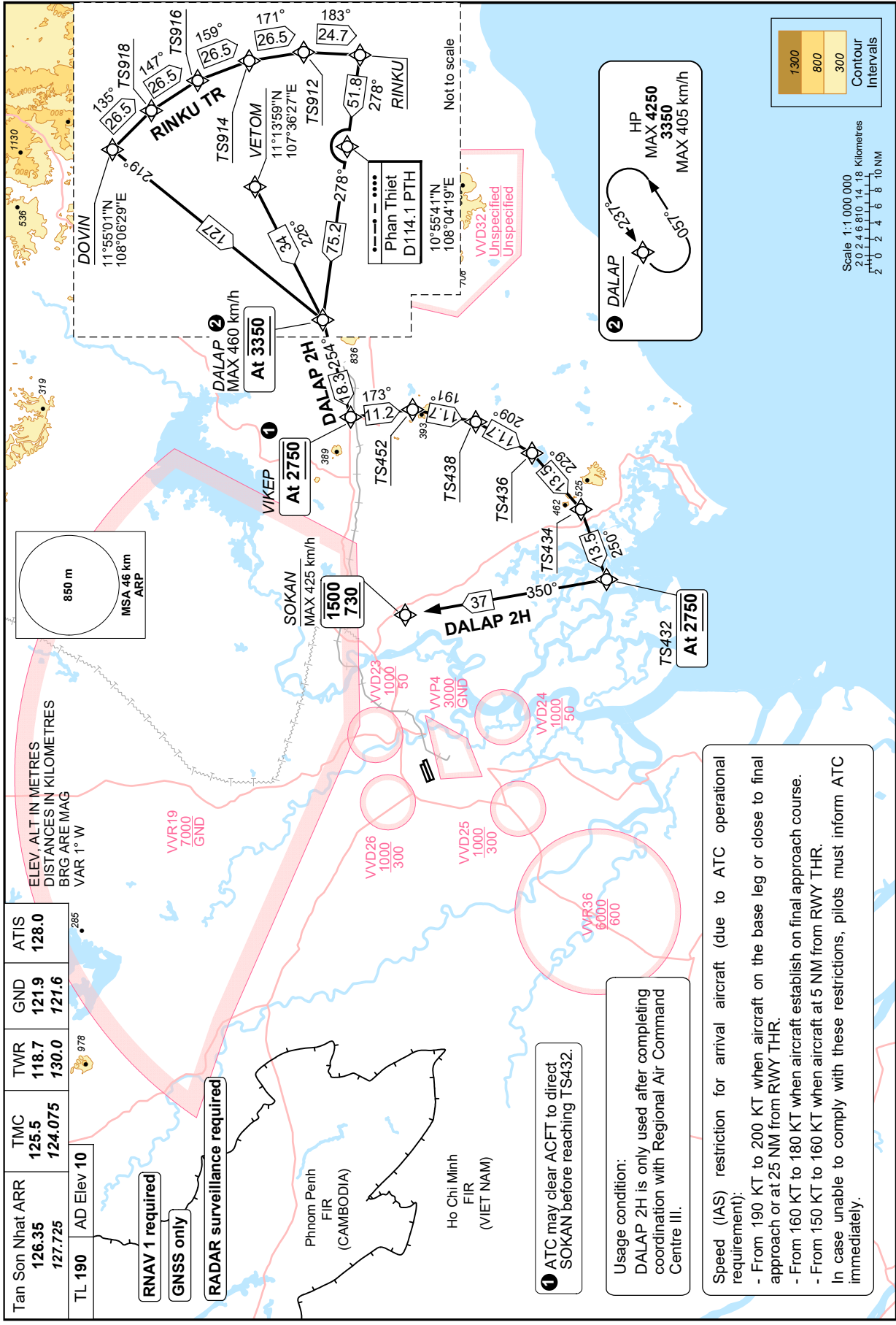


CHANGE: ADDITION OF SPEED RESTRICTION NOTES.



850 m  
MSA 46 km  
ARP

ELEV. ALT IN METRES  
DISTANCES IN KILOMETRES  
BRG ARE MAG  
VAR 1° W

Tan Son Nhat ARR	TMC	TWR	GND	ATIS
126.35	125.5	118.7	121.9	128.0
127.725	124.075	130.0	121.6	
TL 190	AD Elev 10			

RNAV 1 required  
GNSS only

RADAR surveillance required

Phnom Penh  
FIR  
(CAMBODIA)

Ho Chi Minh  
FIR  
(VIET NAM)

1 ATC may clear ACFT to direct SOKAN before reaching TS432.

Usage condition:  
DALAP 2H is only used after completing coordination with Regional Air Command Centre III.

Speed (IAS) restriction for arrival aircraft (due to ATC operational requirement):

- From 190 KT to 200 KT when aircraft on the base leg or close to final approach or at 25 NM from RWY THR.
- From 160 KT to 180 KT when aircraft establish on final approach course.
- From 150 KT to 160 KT when aircraft at 5 NM from RWY THR.

In case unable to comply with these restrictions, pilots must inform ATC immediately.

