

**STANDARD ARRIVAL CHART - INSTRUMENT (STAR)**

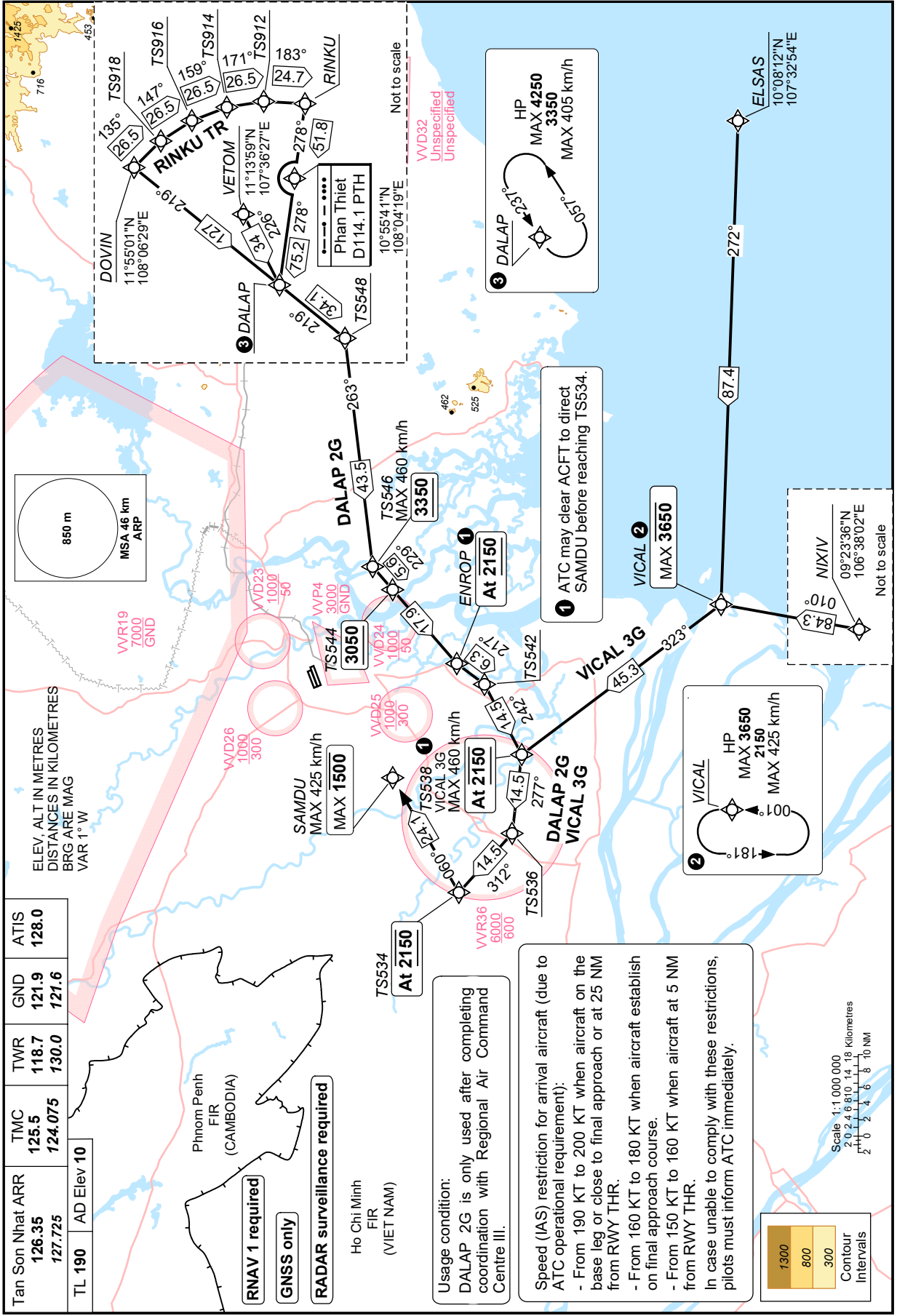
TRANSITION LVL FL190  
TRANSITION ALT 5500 m

**HO CHI MINH/TAN SON NHAAT INTL (VQVTS)  
RNAV RWY 07L/R  
DALAP 2G VICAL 3G**

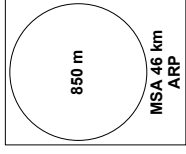
CHANGE: ADDITION OF SPEED RESTRICTION NOTES.

Tan Son Nhat ARR	TMC	TWR	GND	ATIS
126.35	125.5	118.7	121.9	128.0
127.725	124.075	130.0	121.6	

TL 190	AD Elev 10
--------	------------



ELEV. ALT IN METRES  
DISTANCES IN KILOMETRES  
BRG ARE MAG  
VAR 1° W



- RNAV 1 required**
- GNSS only**
- RADAR surveillance required**

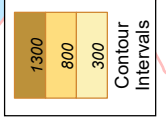
Ho Chi Minh  
FIR  
(VIET NAM)

**Usage condition:**  
DALAP 2G is only used after completing coordination with Regional Air Command Centre III.

**Speed (IAS) restriction for arrival aircraft (due to ATC operational requirement):**

- From 190 KT to 200 KT when aircraft on the base leg or close to final approach or at 25 NM from RWY THR.
- From 160 KT to 180 KT when aircraft establish on final approach course.
- From 150 KT to 160 KT when aircraft at 5 NM from RWY THR.

In case unable to comply with these restrictions, pilots must inform ATC immediately.

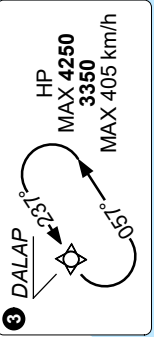


Scale 1:1,000,000  
2 0 2 4 6 8 10 14 18 Kilometres  
2 0 2 4 6 8 10 NM

Not to scale

Not to scale

VWD32  
Unspecified  
Unspecified



**1** ATC may clear ACFT to direct SAMDU before reaching TS534.

