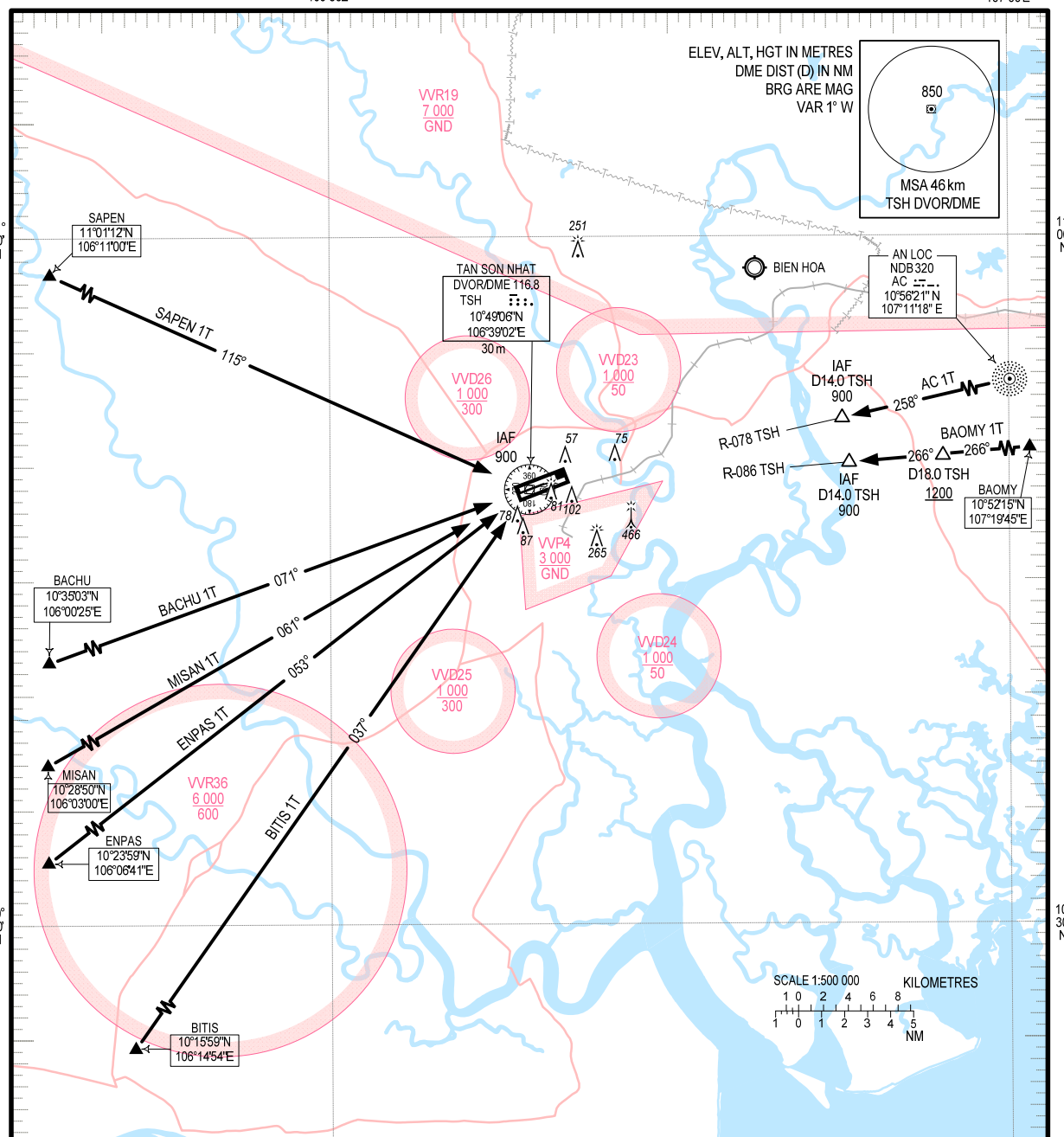


**STANDARD ARRIVAL CHART - INSTRUMENT (STAR) - ICAO**

TRANSITION ALTITUDE 5500 m  
TRANSITION LEVEL FL190

TMC: 125.5 PRI  
124.075 SRY  
ARR: 126.35 PRI  
127.725 SRY  
118.7 PRI  
TWR: 130.0 SRY

**HO CHI MINH/TAN SON NHAT INTL (VVTS) RWY 25L/R**  
AC 1T, BITIS 1T, BAOMY 1T, ENPAS 1T  
MISAN 1T, BACHU 1T, SAPEN 1T  
107°00'E



**RWY 25L/R**

1. AC ONE TANGO ARRIVAL (AC 1T): FROM AC NDB FLY TRACK 258° TO D14.0/R-078 TSH AT 900 m.
2. BACHU ONE TANGO ARRIVAL (BACHU 1T): FROM BACHU FLY TRACK 071° TO TSH DVOR/DME AT 900 m.
3. BAOMY ONE TANGO ARRIVAL (BAOMY 1T): FROM BAOMY FLY TRACK 266° TO D18.0/R-086 TSH AT 1200 m OR ABOVE, CONTINUE TO D14.0/R-086 TSH AT 900 m.
4. BITIS ONE TANGO ARRIVAL (BITIS 1T): FROM BITIS FLY TRACK 037° TO TSH DVOR/DME AT 900 m.
5. MISAN ONE TANGO ARRIVAL (MISAN 1T): FROM MISAN FLY TRACK 061° TO TSH DVOR/DME AT 900 m.
6. ENPAS ONE TANGO ARRIVAL (ENPAS 1T): FROM ENPAS FLY TRACK 053° TO TSH DVOR/DME AT 900 m.
7. SAPEN ONE TANGO ARRIVAL (SAPEN 1T): FROM SAPEN FLY TRACK 115° TO TSH DVOR/DME AT 900 m.