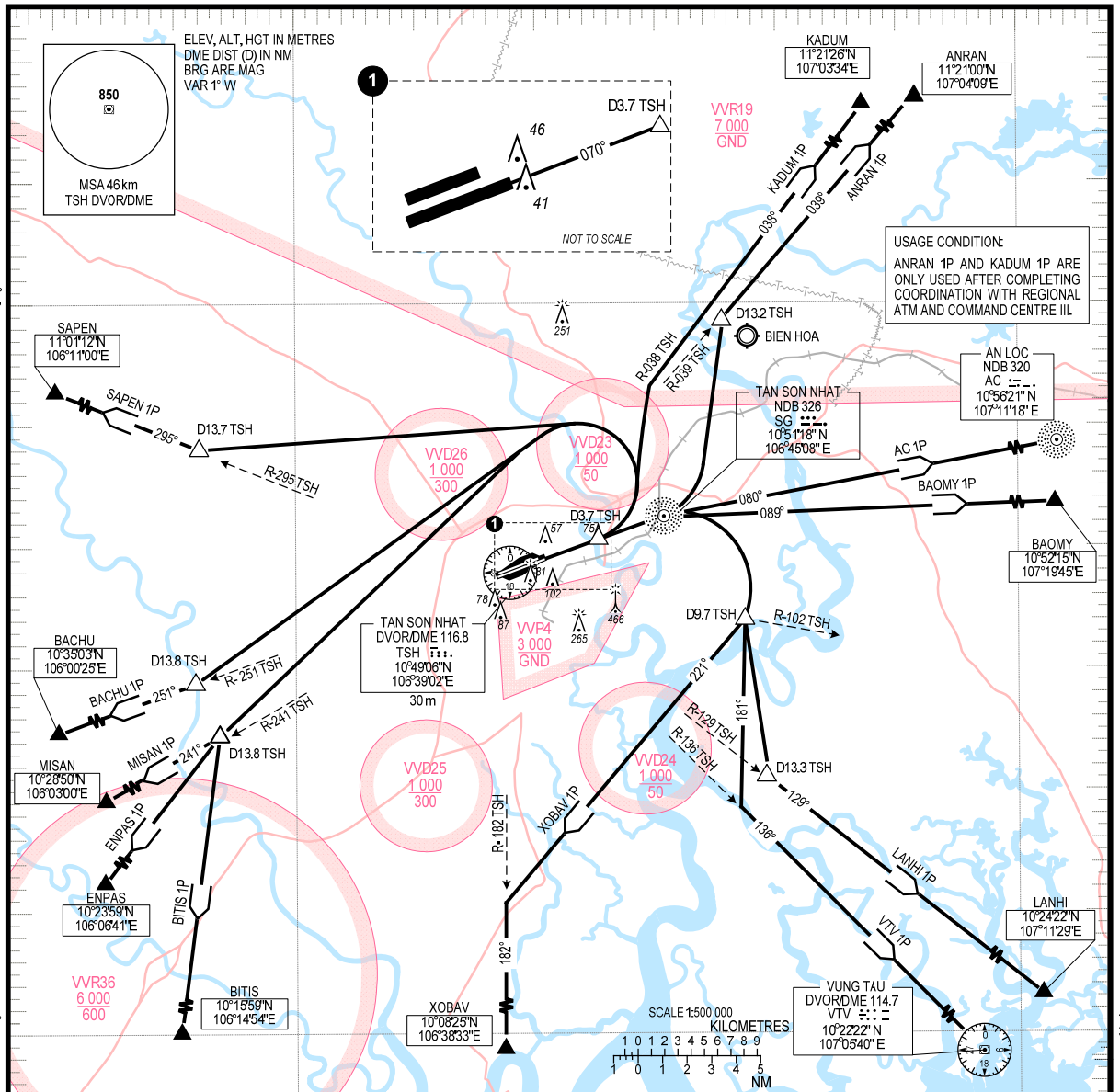


TRANSITION ALTITUDE 5500 m
TRANSITION LEVEL FL190

TMC: 125.5 PRI
124.075 SRY
ARR: 126.35 PRI
127.725 SRY
118.7 PRI
130.0 SRY
TWR:

HO CHI MINH/TAN SON NHAT INTL (VVTS) RWY 07R
ANRAN 1P, AC 1P, BAOMY 1P, BACHU 1P, BITIS 1P, ENPAS 1P, LANHI 1P, XOBAV 1P, KADUM 1P, MISAN 1P, SAPEN 1P, VTV 1P



RWY 07R

1. AC ONE PAPA DEPARTURE (AC 1P): AFTER DEPARTURE, MAINTAIN RWY HEADING PASSING SG NDB, FLY TRACK 080° TO AC NDB.
2. ANRAN ONE PAPA DEPARTURE (ANRAN 1P): AFTER DEPARTURE, MAINTAIN RWY HEADING PASSING SG NDB, TURN LEFT TO INTERCEPT R-039 TSH AT D13.2 TSH TO ANRAN
3. BACHU ONE PAPA DEPARTURE (BACHU 1P): AFTER DEPARTURE, MAINTAIN RWY HEADING TO D3.7 TSH, TURN LEFT TO INTERCEPT R-251 TSH AT D13.8 TSH TO BACHU.
4. BAOMY ONE PAPA DEPARTURE (BAOMY 1P): AFTER DEPARTURE, MAINTAIN RWY HEADING PASSING SG NDB, FLY TRACK 089° TO BAOMY.
5. BITIS ONE PAPA DEPARTURE (BITIS 1P): AFTER DEPARTURE, MAINTAIN RWY HEADING TO D3.7 TSH, TURN LEFT TO D13.8/R-241 TSH, THEN DIRECT TO BITIS.
6. KADUM ONE PAPA DEPARTURE (KADUM 1P): AFTER DEPARTURE, MAINTAIN RWY HEADING TO D3.7 TSH, TURN LEFT TO INTERCEPT R-038 TSH TO KADUM. MINIMUM PDG 3.4% UNTIL 300 m.
7. LANHI ONE PAPA DEPARTURE (LANHI 1P): AFTER DEPARTURE, MAINTAIN RWY HEADING PASSING SG NDB, TURN RIGHT TO INTERCEPT D9.7R-102 TSH, INTERCEPT R-129 TSH AT D13.3 TSH TO LANHI.
8. MISAN ONE PAPA DEPARTURE (MISAN 1P): AFTER DEPARTURE, MAINTAIN RWY HEADING TO D3.7 TSH, TURN LEFT TO INTERCEPT R-241 TSH AT D13.8 TSH TO MISAN.
9. ENPAS ONE PAPA DEPARTURE (ENPAS 1P): AFTER DEPARTURE, MAINTAIN RWY HEADING TO D3.7 TSH, TURN LEFT TO D13.8/R-241 TSH, THEN DIRECT TO ENPAS.
10. SAPEN ONE PAPA DEPARTURE (SAPEN 1P): AFTER DEPARTURE, MAINTAIN RWY HEADING TO D3.7 TSH, TURN LEFT TO INTERCEPT R-295 TSH AT D13.7 TSH TO SAPEN.
11. VTV ONE PAPA DEPARTURE (VTV 1P): AFTER DEPARTURE, MAINTAIN RWY HEADING PASSING SG NDB, TURN RIGHT TO D9.7R-102 TSH, FLY TRACK 181° TO INTERCEPT R-136 TSH TO VTV DVOR/DME.
12. XOBAV ONE PAPA DEPARTURE (XOBAV 1P): AFTER DEPARTURE, MAINTAIN RWY HEADING PASSING SG NDB, TURN RIGHT TO D9.7R-102 TSH, FLY TRACK 221° TO INTERCEPT R-182 TSH TO XOBAV.