

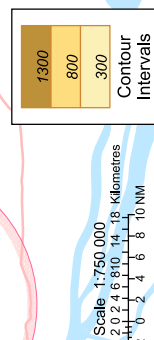
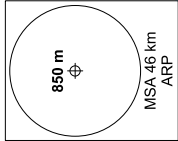
ELEV. ALT. HGT. in metres
Distances in kilometres
BRG are mag
Var 1°W

- RNAV1 required
- GNSS only
- RF Required
- RADAR surveillance required

Tan Son Nhat DLV	121.8	123.6	AD Elev	10
GND	121.9	121.6		
TWR	118.7	130.0		
TMC	125.5	124.075		
ATIS	128.0			

CLIMB GRADIENT
For BACHU 2C, MISAN 2C:
MNM 5.4% (ATC constraint) until
2750 then resume 3.3%.

NOTES:
- Pilots are required to strictly comply with RF turn.
- ATC shall strengthen monitoring and promptly inform pilots for not deviating from RF leg.



Scale 1:750 000
0 2 4 6 8 10 Kilometres
0 2 4 6 8 10 NM

Not To scale

Not to scale

Can Tho	10°05'00"N	105°42'20"E
D113.2 TRN		
	10°35'03"N	106°00'25"E