

**INSTRUMENT APPROACH CHART - ICAO**

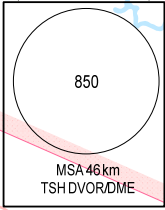
**AERODROME ELEVATION 10m**  
**HEIGHTS RELATED TO AD ELEV**

TMC: 125.5 PRI  
 124.075 SRY  
 ARR: 126.35 PRI  
 127.725 SRY  
 TWR: 118.7 PRI  
 130.0 SRY

**HO CHI MINH/TAN SON NHAT INTL (VVTS) VOR RWY 25R**

106°30'E

107°00'E



ELEV, ALT, HGT IN METRES  
 DME DIST (D) IN NM  
 BRG ARE MAG  
 VAR 1° W

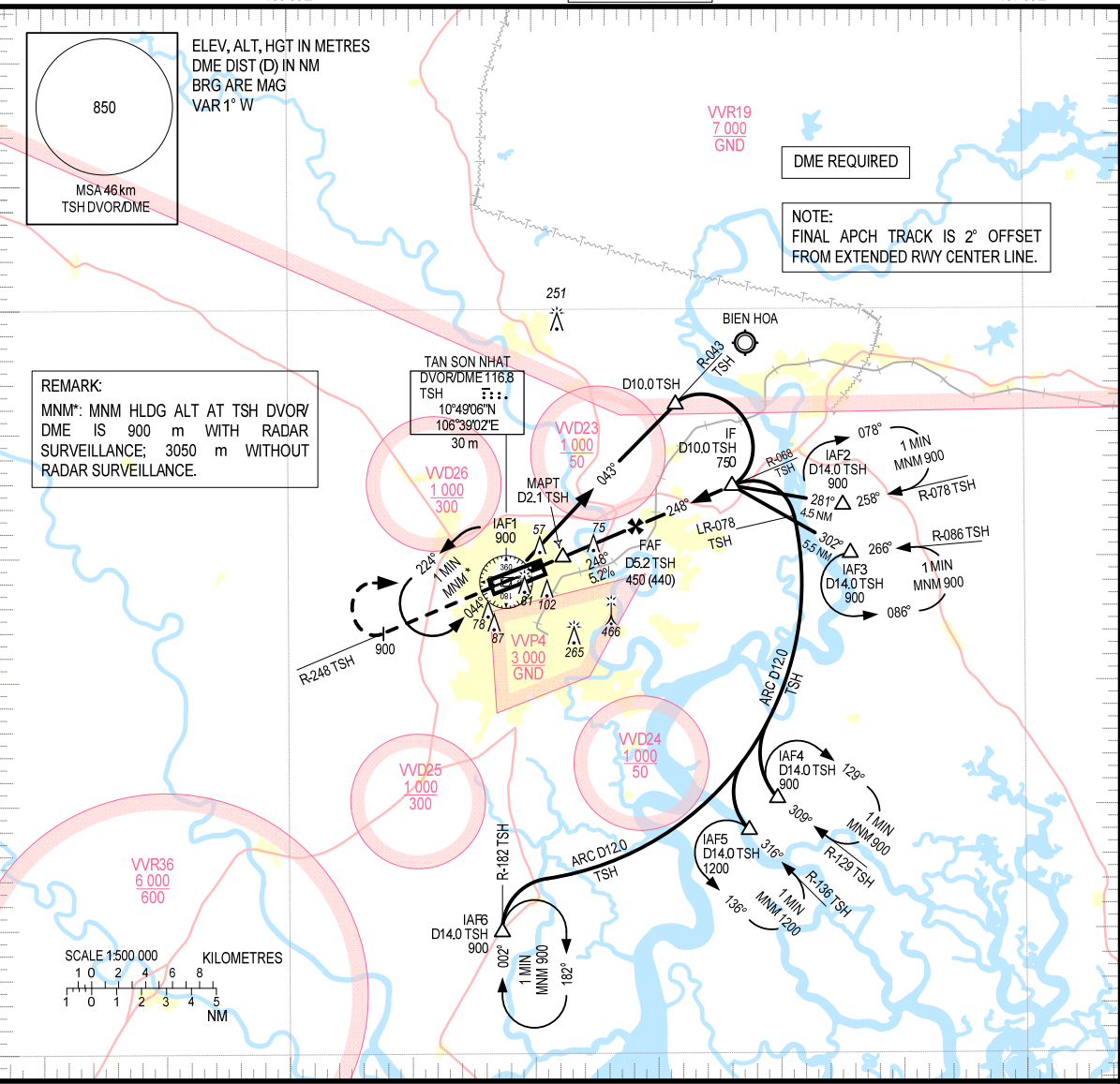
VVR19  
7 000  
GND

DME REQUIRED

NOTE:  
FINAL APCH TRACK IS 2° OFFSET FROM EXTENDED RWY CENTER LINE.

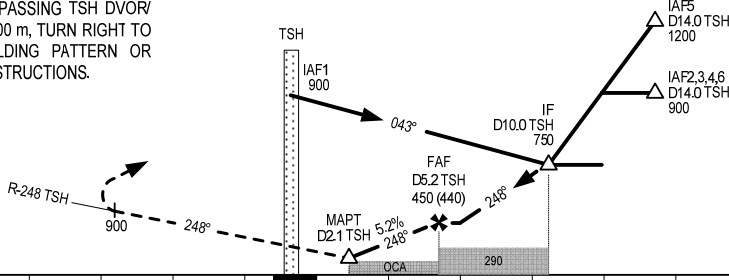
**REMARK:**

MNM: MNM HLDG ALT AT TSH DVOR/DME IS 900 m WITH RADAR SURVEILLANCE; 3050 m WITHOUT RADAR SURVEILLANCE.



**MISSED APPROACH:**  
 MAINTAIN FINAL APCH TRACK PASSING TSH DVOR/DME, CLIMB ON R-248 TSH TO 900 m, TURN RIGHT TO TSH DVOR/DME TO JOIN HOLDING PATTERN OR FOLLOW TAN SON NHAT TWR INSTRUCTIONS.

TRANSITION ALTITUDE 5500



AD ELEV 10m

KILOMETRES TO/FM THR RWY 25R 20 15 10 5 0 5 10 15 20 25 30 35 40

OCA/H				
CAT	A	B	C	D
STRAIGHT-IN APCH	155 (145)			
CIRCLING	200 (190)		300 (290)	

CIRCLING IS ONLY IN THE NORTH OF RWY.

GS	km/h	150	200	250	300	350
FAF - MAPT 3.1 NM	min:s	2:18	1:43	1:23	1:09	0:59
ROD	m/s	2.2	2.9	3.6	4.4	5.1
DIST TO TSH (NM)	DME	5.2	5.0	4.0	3.0	2.2
ALT	M	450	430	330	235	155