

**INSTRUMENT
APPROACH
CHART – ICAO**

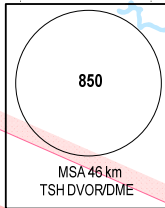
AERODROME ELEV 10 m
HEIGHTS RELATED TO
AD ELEV

TMC: 125.5PRI
124.075SRV
ARR: 126.35PRI
127.725SRV
TWR: 118.7PRI
130.0SRV

HO CHI MINH/TAN SON NHAT INTL (VVTS)
VOR RWY 25L

106°30'E

107°00'E

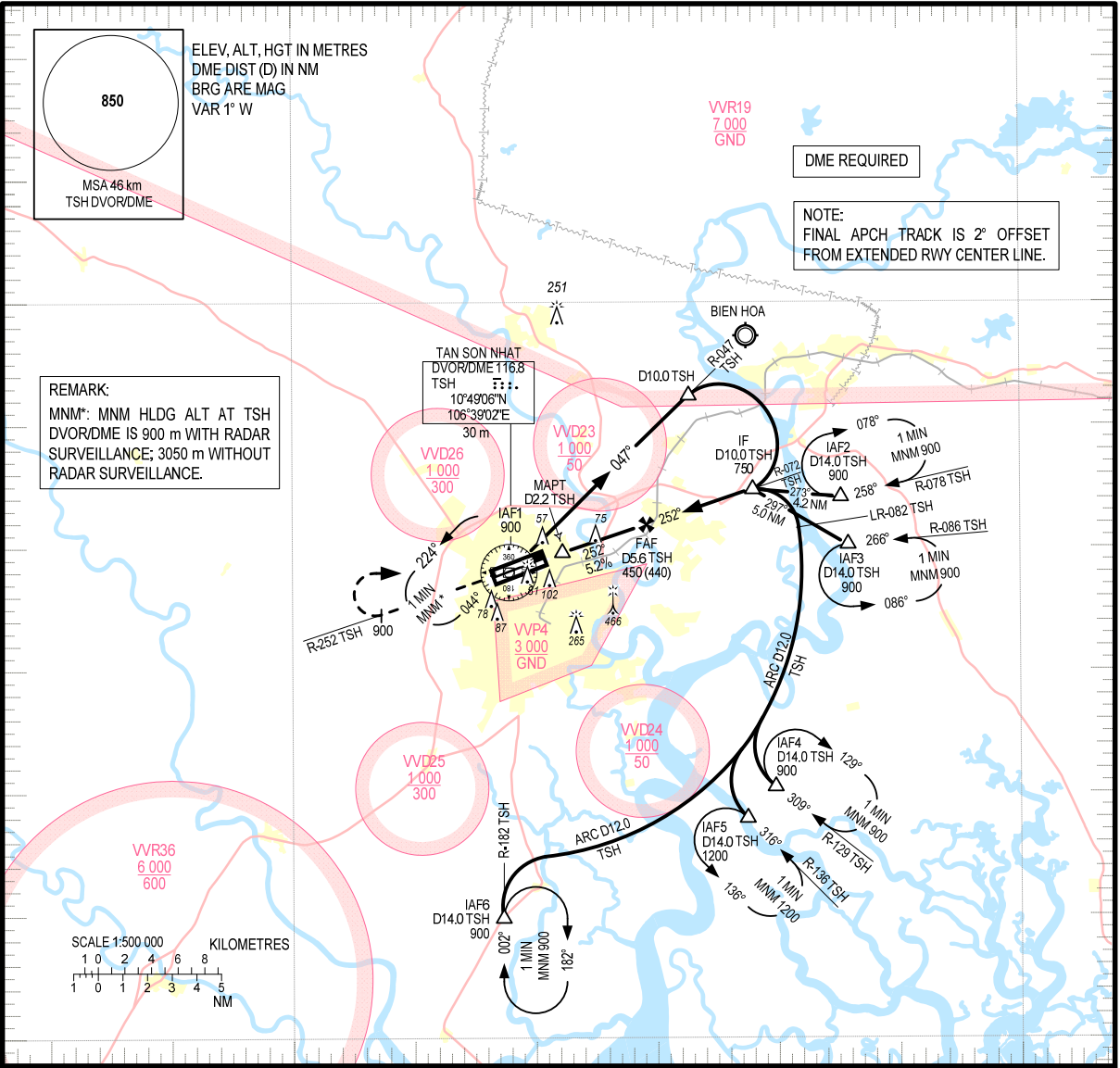


ELEV, ALT, HGT IN METRES
DME DIST (D) IN NM
BRG ARE MAG
VAR 1° W

DME REQUIRED

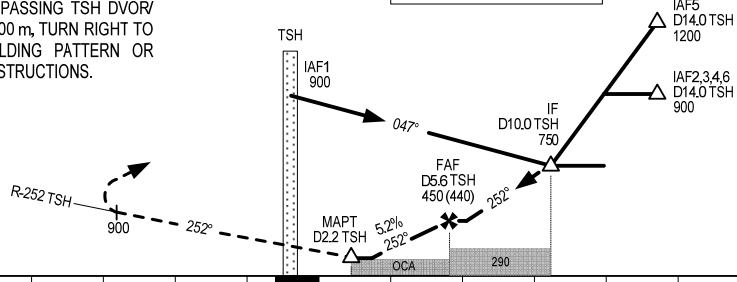
NOTE:
FINAL APCH TRACK IS 2° OFFSET
FROM EXTENDED RWY CENTER LINE.

REMARK:
MNM*: MNM HLDG ALT AT TSH
DVOR/DME IS 900 m WITH RADAR
SURVEILLANCE; 3050 m WITHOUT
RADAR SURVEILLANCE.



MISSED APPROACH:
MAINTAIN FINAL APCH TRACK PASSING TSH DVOR/
DME, CLIMB ON R-252 TSH TO 900 m, TURN RIGHT TO
TSH DVOR/DME TO JOIN HOLDING PATTERN OR
FOLLOW TAN SON NHAT TWR INSTRUCTIONS.

TRANSITION ALTITUDE 5500



AD ELEV 10 m

KILOMETRES TO/FM THR RWY 25L

OCA/H				
CAT	A	B	C	D
STRAIGHT-IN APCH	165 (155)			
CIRCLING	200 (190)		300 (290)	

CIRCLING IS ONLY IN THE NORTH OF RWY.

GS	km/h	150	200	250	300	350
FAF - MAPT 3.4 NM	mins	2:31	1:53	1:31	1:16	1:05
ROD	m/s	2.2	2.9	3.6	4.4	5.1
DIST TO TSH (NM)	DME	5.6	5.0	4.0	3.0	2.6
	ALT	M	450	390	295	200