

**INSTRUMENT
APPROACH
CHART - ICAO**

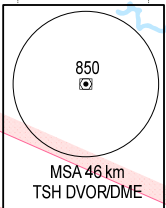
AERODROME ELEVATION 10 m
HEIGHTS RELATED TO
DTHR RWY 07R - ELEV 7 m

**HO CHI MINH/TAN SON NHAT INTL (VVTS)
VOR RWY 07R**

TMC: 125.5 PRI
124.075 SRY
ARR: 126.35 PRI
127.725 SRY
TWR: 118.7 PRI
130.0 SRY

106°30'E

107°00'E

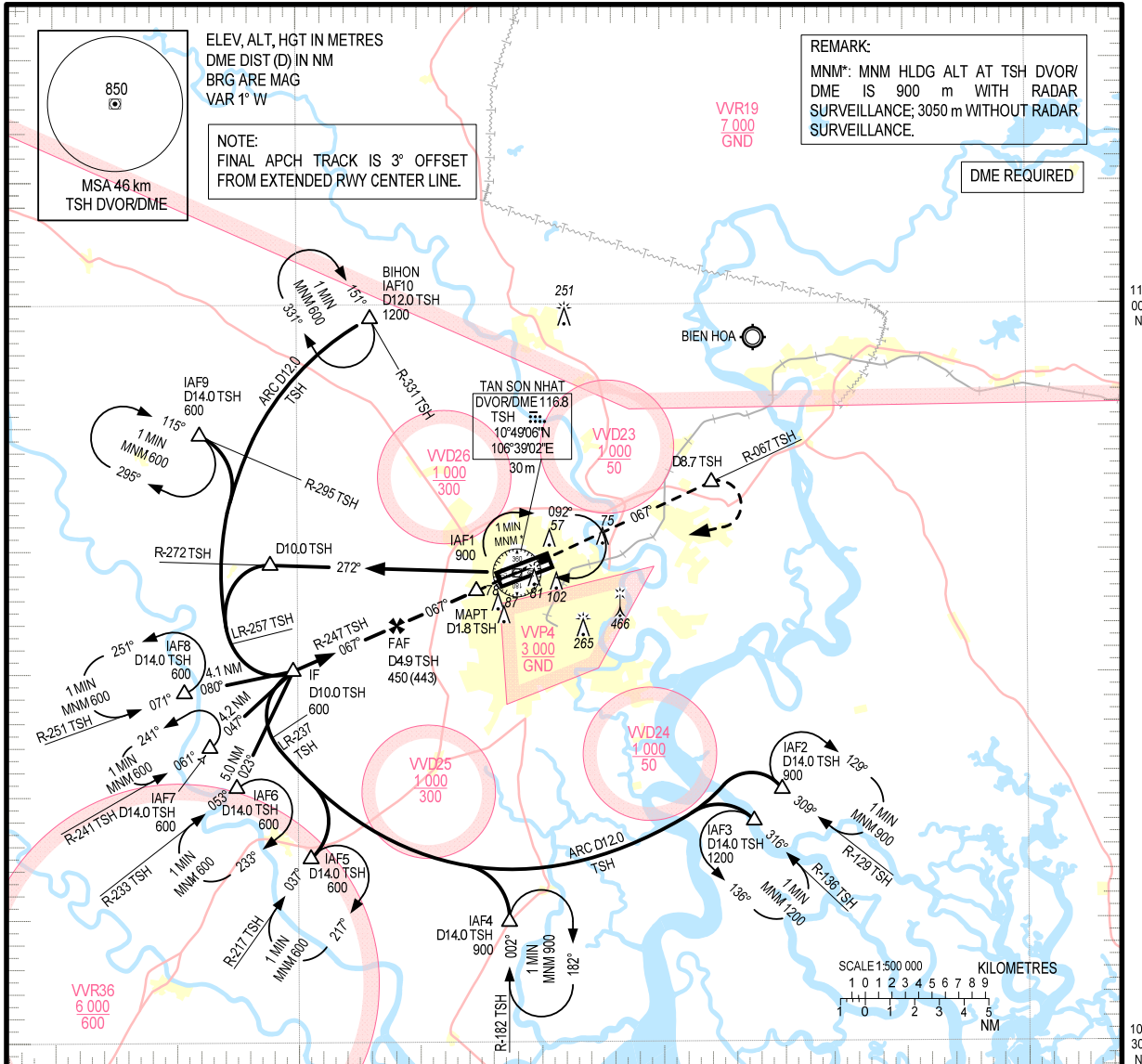


ELEV, ALT, HGT IN METRES
DME DIST (D) IN NM
BRG ARE MAG
VAR 1° W

NOTE:
FINAL APCH TRACK IS 3° OFFSET
FROM EXTENDED RWY CENTER LINE.

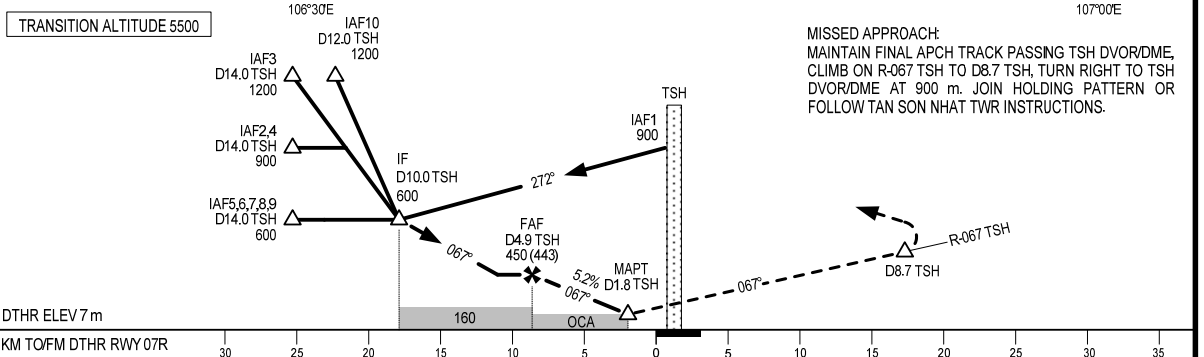
REMARK:
MNM*: MNM HLDG ALT AT TSH DVOR/
DME IS 900 m WITH RADAR
SURVEILLANCE; 3050 m WITHOUT RADAR
SURVEILLANCE.

DME REQUIRED



TRANSITION ALTITUDE 5500

MISSED APPROACH:
MAINTAIN FINAL APCH TRACK PASSNG TSH DVOR/DME.
CLIMB ON R-067 TSH TO D8.7 TSH, TURN RIGHT TO TSH
DVOR/DME AT 900 m. JOIN HOLDING PATTERN OR
FOLLOW TAN SON NHAT TWR INSTRUCTIONS.



OCA (H)	A	B	C	D
STRAIGHT-IN APCH	150 (143)			
CIRCLING	200 (190)		300 (290)	

CIRCLING IS ONLY IN THE NORTH OF RWY.

GS	km/h	150	200	250	300	350
FAF - MAPT 3.1 NM	min:s	2:18	1:43	1:23	1:09	0:59
ROD	m/s	2.2	2.9	3.6	4.4	5.1

DIST TO TSH (NM)	DME	4.9	3.9	2.9	1.8
ALT	M	450	355	255	150