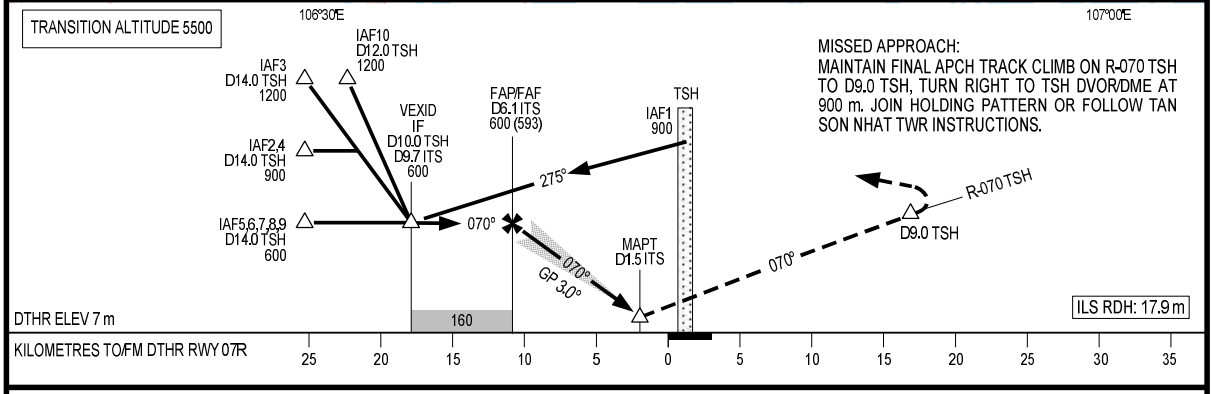
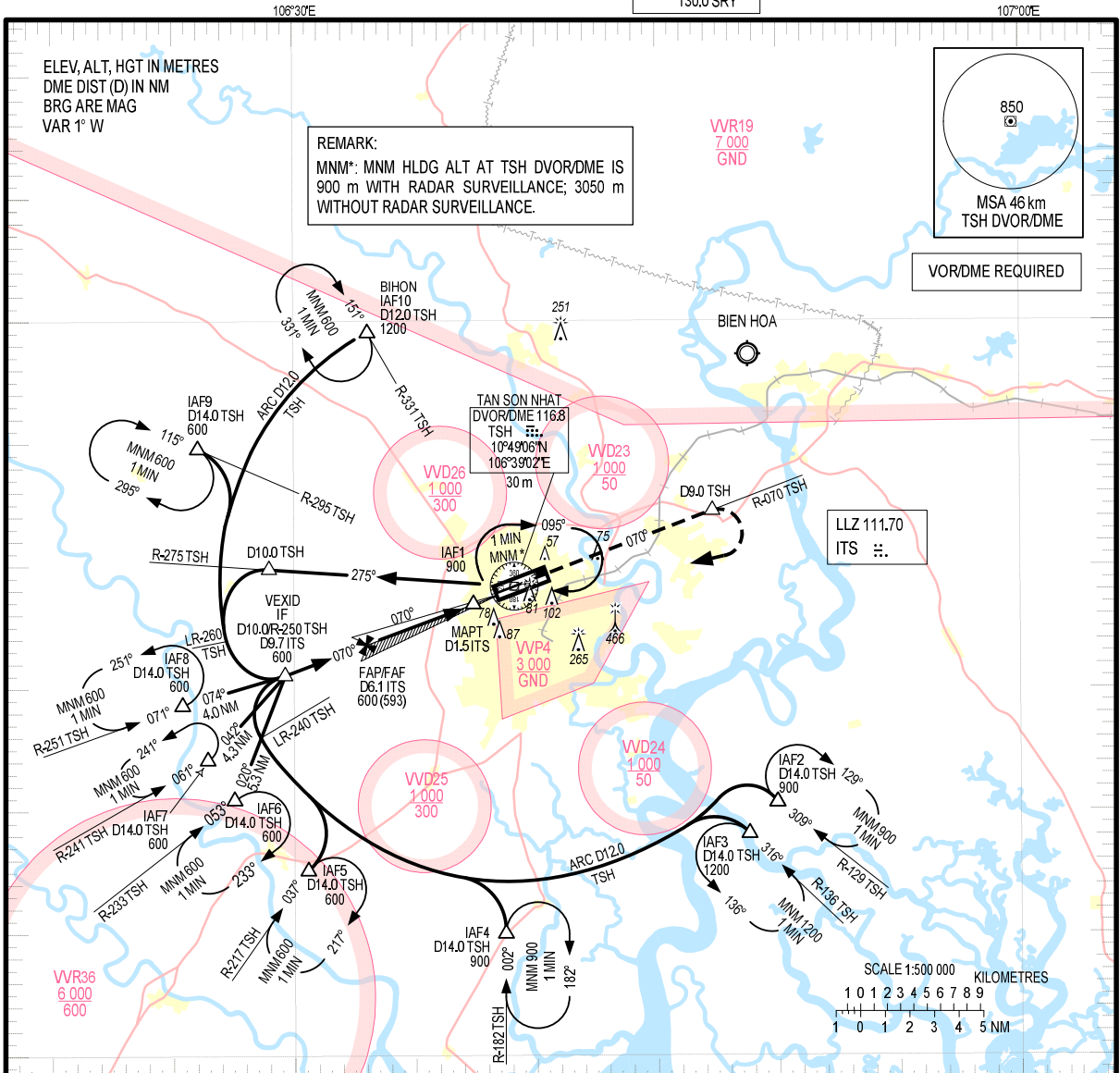


**INSTRUMENT  
APPROACH  
CHART - ICAO**

**AERODROME ELEVATION 10 m  
HEIGHTS RELATED TO  
DTHR RWY 07R - ELEV 7 m**

TMC: 125.5 PRI  
124.075 SRY  
ARR: 126.35 PRI  
127.725 SRY  
TWR: 118.7 PRI  
130.0 SRY

**HO CHI MINH/TAN SON NHAT INTL (VVTS)  
ILS Y RWY 07R**



| OCA/H               |         | A         | B       | C         | D       |
|---------------------|---------|-----------|---------|-----------|---------|
| STRAIGHT-IN<br>APCH | CAT I   | 80 (73)   | 83 (76) | 86 (79)   | 89 (82) |
|                     | GP INOP | 150 (143) |         |           |         |
| CIRCLING            |         | 200 (190) |         | 300 (290) |         |

| GS                | km/h  | 150  | 200  | 250  | 300  | 350  |
|-------------------|-------|------|------|------|------|------|
| FAF - MAPT 4.6 NM | min:s | 3:24 | 2:33 | 2:02 | 1:42 | 1:27 |
| ROD               | m/s   | 22   | 29   | 3.6  | 4.4  | 5.1  |

CIRCLING IS ONLY IN THE NORTH OF RWY.