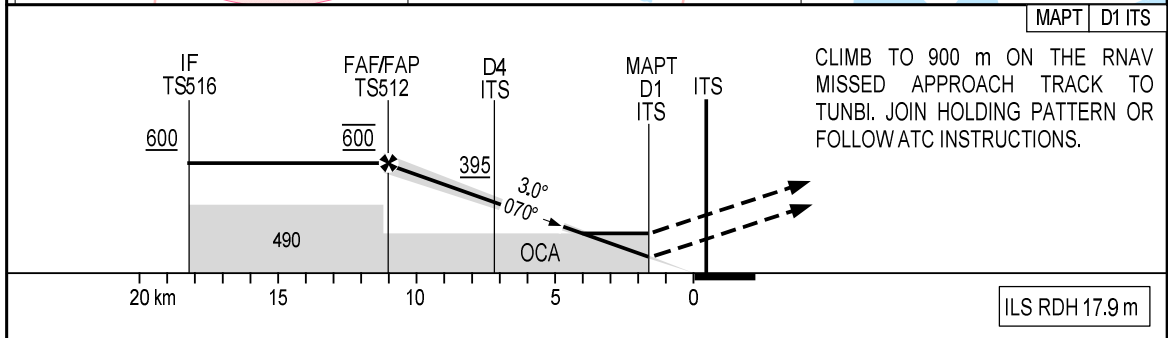
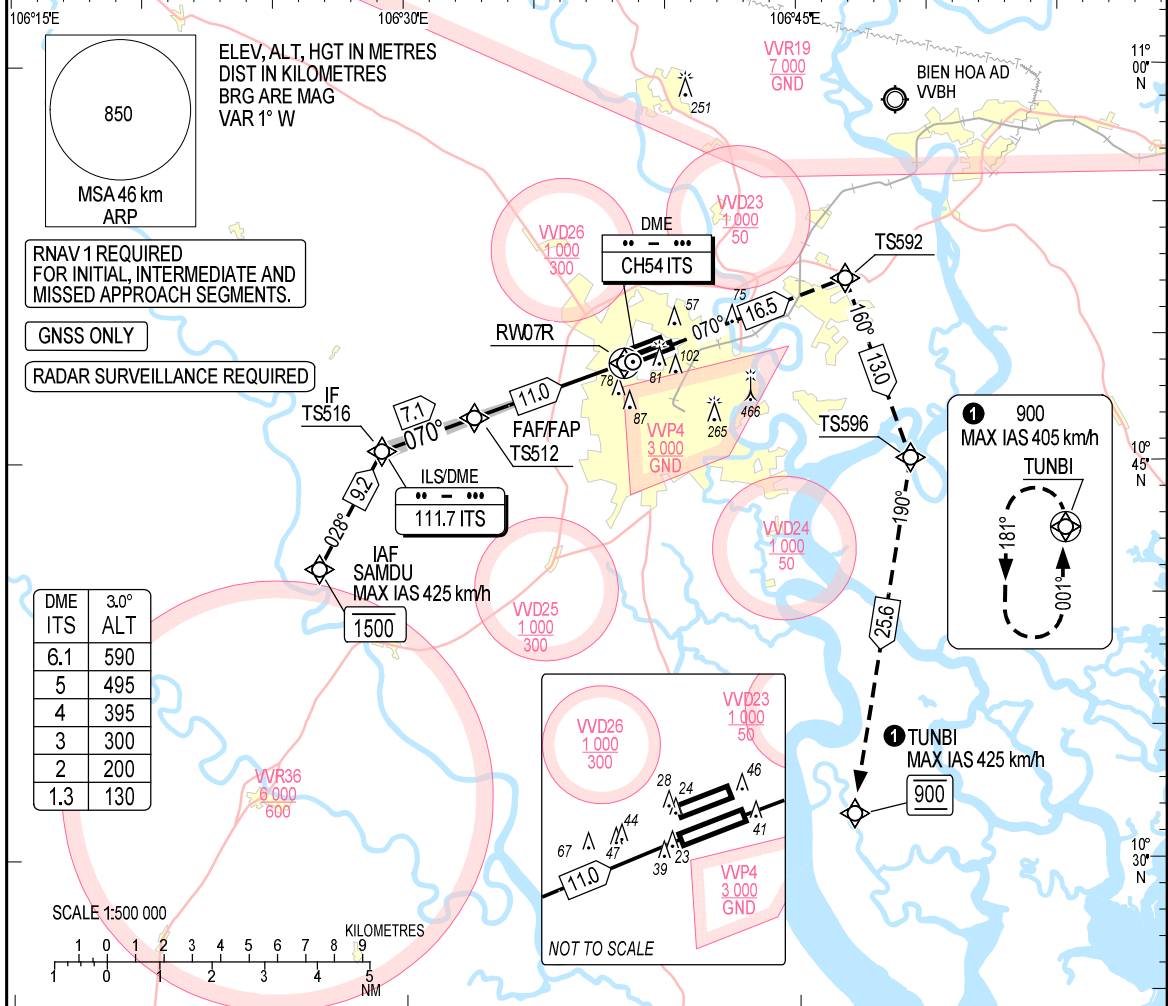


ARR 126.35 127.725	TMC 125.5 124.075	TWR 118.7 130.0	GND 121.9 121.6	ATIS 128.0	
ILS/DME 111.7 ITS		FAT 070°	DTHR ELEV 7	AD ELEV 10	TL 190
TA 5500					



OCA/H		A	B	C	D
STRAIGHT-IN APCH	CAT I	80 (73)	83 (76)	86 (79)	89 (82)
	GP INOP	150 (143)			
CIRCLING		NOT APPLICABLE			

GS (km/h)	100	150	200	250	300
ROD 3.0° (m/s)	1.46	2.18	2.91	3.64	4.37
FAF-MAPt (m:s)	6:34	4:22	3:17	2:37	2:11