

**INSTRUMENT
APPROACH
CHART – ICAO**

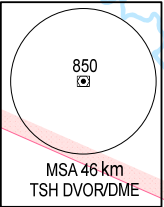
AERODROME ELEVATION 14 m
HEIGHTS RELATED TO
THR RWY 07L – ELEV 6 m

TMC: 125.5 PRI
124.075 SRY
ARR: 126.35 PRI
127.725 SRY
TWR: 118.7 PRI
130.0 SRY

**HO CHI MINH/TAN SON NHAT INTL (VCTS)
VOR RWY 07L**

106°30'E

107°00'E

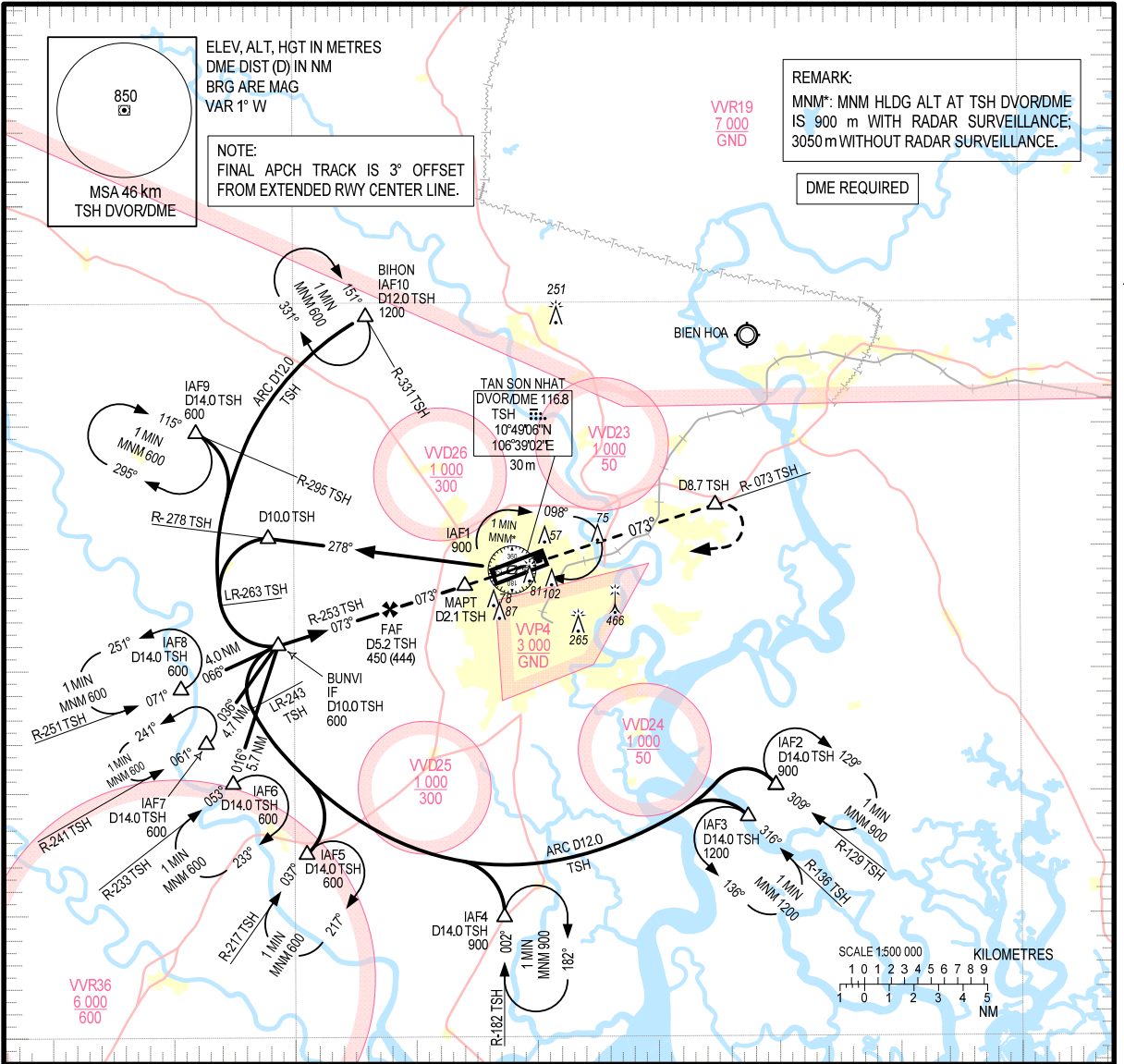


ELEV, ALT, HGT IN METRES
DME DIST (D) IN NM
BRG ARE MAG
VAR 1° W

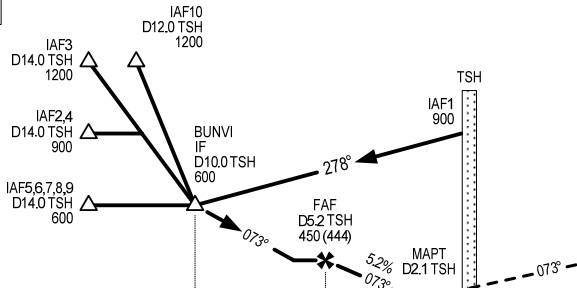
NOTE:
FINAL APCH TRACK IS 3° OFFSET
FROM EXTENDED RWY CENTER LINE.

REMARK:
MNM*: MNM HLDG ALT AT TSH DVOR/DME
IS 900 m WITH RADAR SURVEILLANCE;
3050 m WITHOUT RADAR SURVEILLANCE.

DME REQUIRED



TRANSITION ALTITUDE 5500



MISSED APPROACH:
MAINTAIN FINAL APCH TRACK PASSING TSH DVOR/DME,
CLIMB ON R-073 TSH TO D8.7 TSH, TURN RIGHT TO TSH
DVOR/DME AT 900 m. JOIN HOLDING PATTERN OR
FOLLOW TAN SON NHAT TWR INSTRUCTIONS.

THR ELEV 6m

KILOMETRES TO/ FM THR RWY 07L

OCA (H)	A	B	C	D
STRAIGHT-IN APCH	150 (144)			
CIRCLING	200 (190)		300 (290)	

GS	km/h	150	200	250	300	350
FAF – MAPT 3.1 NM	mins	2:18	1:43	1:23	1:09	0:59
ROD	m/s	2.2	2.9	3.6	4.4	5.1

DIST TO TSH (NM)	DME	5.2	4.2	3.2	2.1
ALT	M	450	350	255	150

CIRCLING IS ONLY IN THE NORTH OF RWY.