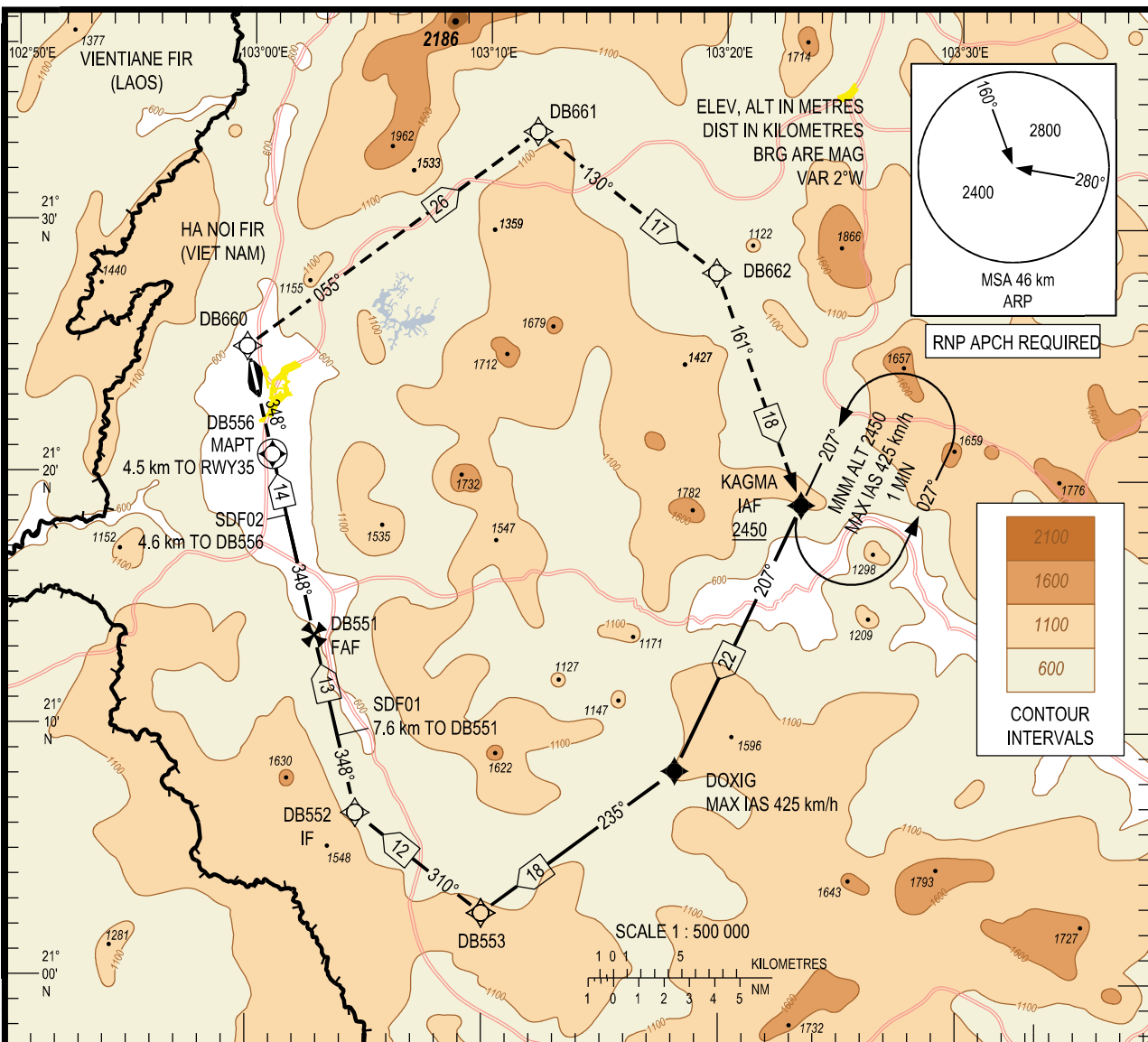


**INSTRUMENT
APPROACH
CHART - ICAO**

AERODROME ELEV 485 m
HEIGHTS RELATED TO
THR RWY 35 - ELEV 481 m

TWR: 118.7

**DIEN BIEN/DIEN BIEN DOM (VQDB)
RNP Y RWY 35**



KILOMETRES TO NEXT WPT	DB556 (MAPT)	1	2	4	6	8	10	12	13.6
ALT		830	895	1015	1135	1260	1380	1505	1600

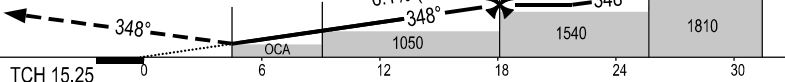
MISSED APPROACH:

CLIMB ON COURSE 348° TO DB660, TURN RIGHT TO DB661, DB662, KAGMA AT 2450 m OR ABOVE. JOIN HOLDING PATTERN AND CLIMB TO FL110 IN HOLDING PATTERN. CONTINUE FOLLOW DIEN BIEN TWR INSTRUCTIONS.

TRANSITION ALTITUDE 2750

THR ELEV 481

KILOMETRES TO/FM THR RWY 35



OCA (H)	MACG	A	B	C
LNAV	2.5%	1060 (579)		
	4.0%	830 (349)		
CIRCLING		NOT APPLICABLE		

GS	km/h	150	200	250	300	350
ROD FAF - MAPT	m/s	2.5	3.4	4.2	5.1	5.9

SEE THE NEXT PAGES FOR CODING DATA.