

DME DIST	DBN	2.6	4	5	6	7	8	9.0
ALT 6.1%		875	1035	1150	1260	1375	1485	1600

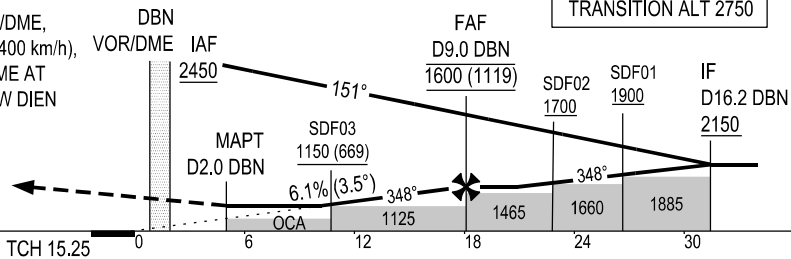
MISSED APPROACH:

MAINTAIN FINAL APPROACH TRACK PASSING DBN VOR/DME, TURN RIGHT CLIMB TO 1850 m ON R-046 DBN (MAX IAS 400 km/h), TURN RIGHT TO INTERCEPT R-067 DBN TO DBN VOR/DME AT 2450 m OR ABOVE. JOIN HOLDING PATTERN OR FOLLOW DIEN BIEN TWR INSTRUCTIONS.

TRANSITION ALT 2750

THR ELEV 481

KILOMETRES TO/FM THR RWY 35



OCA (H)	MACG	C
STRAIGHT-IN	2.5%	1120 (639)
APPROACH	4.0%	875 (394)
CIRCLING	NOT APPLICABLE	

GS	km/h	150	200	250	300	350
FAF - MAPT 7.1 NM	min:s	5:14	3:56	3:08	2:37	2:15
ROD FAF - MAPT 6.1% (3.5°)	m/s	2.5	3.4	4.2	5.1	5.9