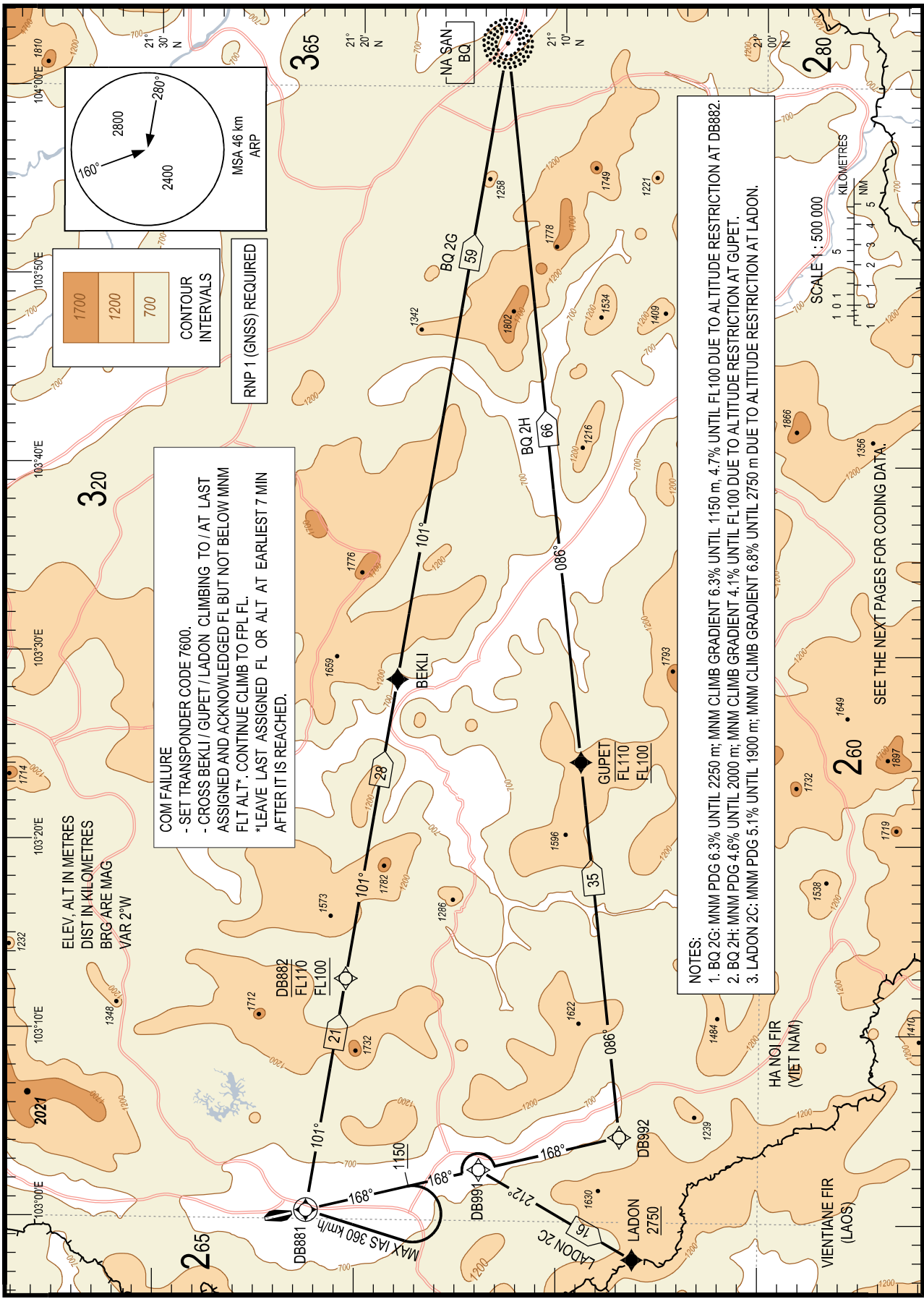
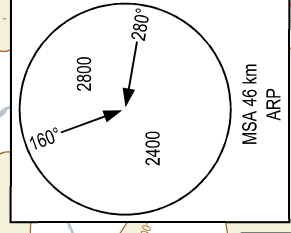


CHANGE: NEW CHART.



COM FAILURE
 - SET TRANSPONDER CODE 7600.
 - CROSS BEKLI / GUPET / LADON. CLIMBING TO / AT LAST ASSIGNED AND ACKNOWLEDGED FL BUT NOT BELOW MNNM FLT ALT*. CONTINUE CLIMB TO FPL FL.
 *LEAVE LAST ASSIGNED FL OR ALT. AT EARLIEST 7 MIN AFTER IT IS REACHED.

NOTES:
 1. BQ 2G: MNNM PDG 6.3% UNTIL 2250 m; MNNM CLIMB GRADIENT 6.3% UNTIL 1150 m; 4.7% UNTIL FL100 DUE TO ALTITUDE RESTRICTION AT DB882.
 2. BQ 2H: MNNM PDG 4.6% UNTIL 2000 m; MNNM CLIMB GRADIENT 4.1% UNTIL FL100 DUE TO ALTITUDE RESTRICTION AT GUPET.
 3. LADON 2C: MNNM PDG 5.1% UNTIL 1900 m; MNNM CLIMB GRADIENT 6.8% UNTIL 2750 m DUE TO ALTITUDE RESTRICTION AT LADON.

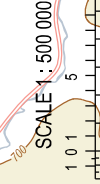


CONTOUR INTERVALS

1700
1200
700

RNP 1 (GNSS) REQUIRED

ELEV. ALT IN METRES
 DIST IN KILOMETRES
 BRG ARE MAG
 VAR 2°W



SEE THE NEXT PAGES FOR CODING DATA.