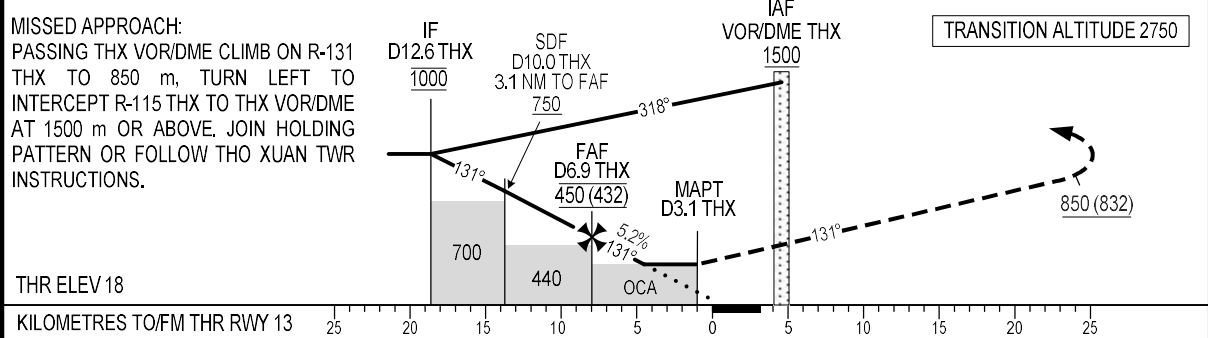


DME DIST	THX	5	6	6.9
ALTITUDE (5.2%)		270	365	450



KILOMETRES TO/FM THR RWY 13	25	20	15	10	5	0	5	10	15	20	25
-----------------------------	----	----	----	----	---	---	---	----	----	----	----

OCA (H)	A	B
STRAIGHT-IN APPROACH	270 (251)	
CIRCLING	300 (281)	

GS	km/h	100	150	200	250	300
FAF - MAPT 7.0 km	min:s	4:11	2:47	2:05	1:40	1:24
RATE OF DESCENT 5.2% (3°)	m/s	1.5	2.2	2.9	3.6	4.4

CIRCLING IS ONLY IN THE NORTH OF RWY.