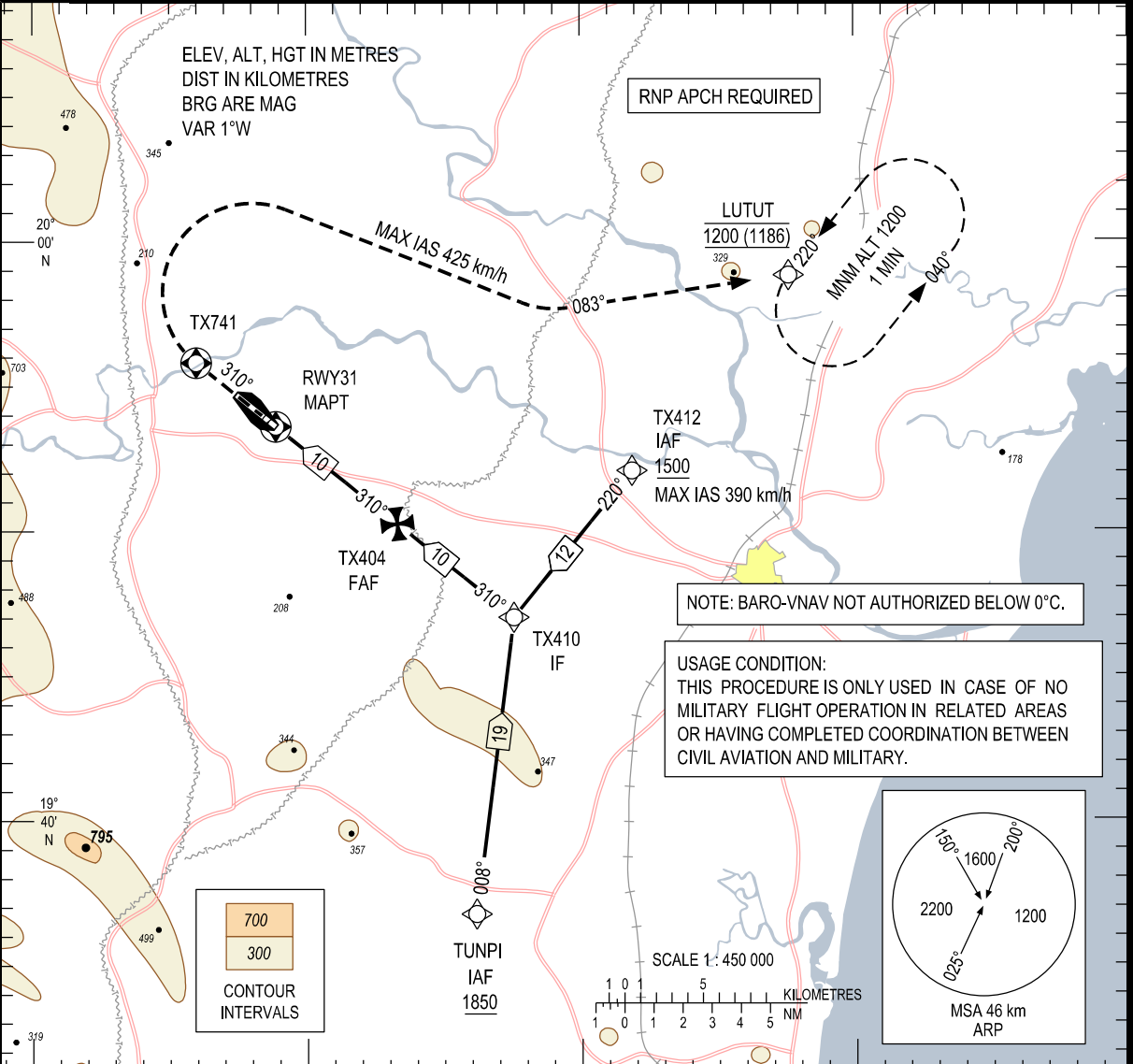
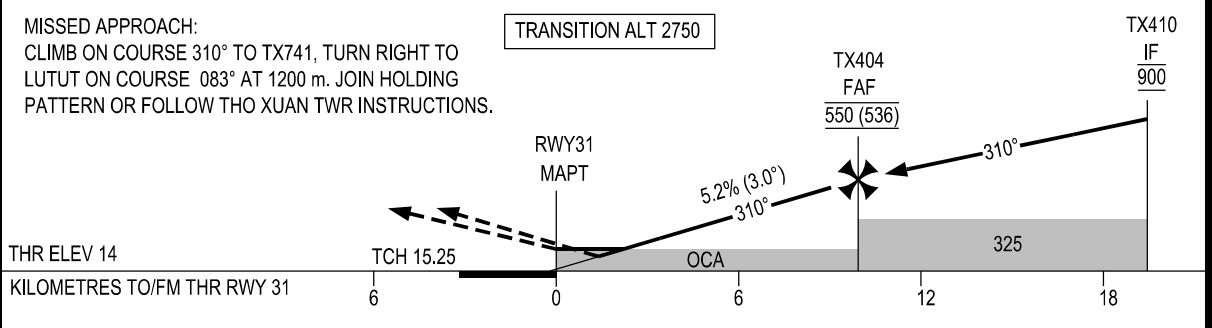


105° 20' E 105° 40' E 106° 00' E



KILOMETRES TO NEXT WPT	RWY31	2.2	4.0	6.0	8.0	9.9
ALTITUDE		145	240	345	450	550



OCA (H)	A	B	C	D
LNAV/VNAV	115 (101)			
LNAV	145 (131)			
CIRCLING	300 (281)	320 (301)	430 (411)	

GS	km/h	150	200	250	300	350
FAF - MAPT (9.9 km)	min:s	3:58	2:59	2:23	1:59	1:42
RATE OF DESCENT FAF-MAPT 3° (5.2%)	m/s	2.2	2.9	3.6	4.4	5.1