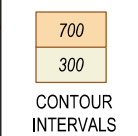
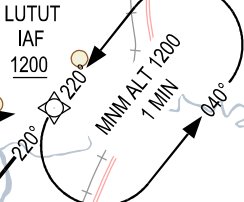
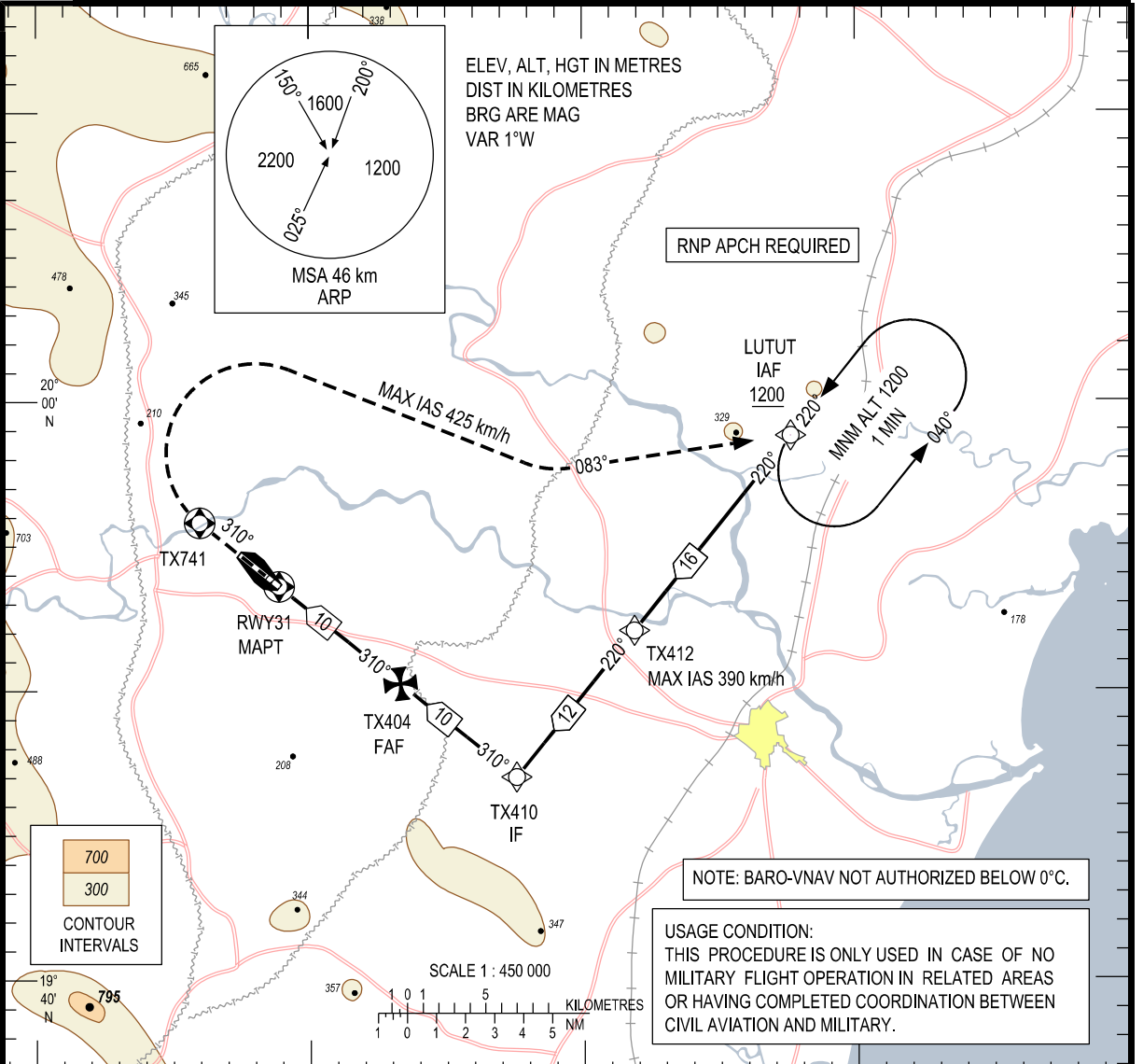


ELEV, ALT, HGT IN METRES  
DIST IN KILOMETRES  
BRG ARE MAG  
VAR 1°W

**RNP APCH REQUIRED**



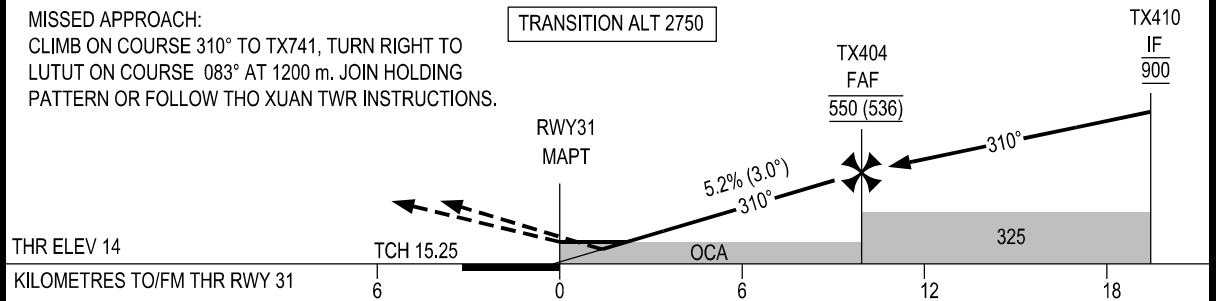
**NOTE: BARO-VNAV NOT AUTHORIZED BELOW 0°C.**

**USAGE CONDITION:**  
THIS PROCEDURE IS ONLY USED IN CASE OF NO  
MILITARY FLIGHT OPERATION IN RELATED AREAS  
OR HAVING COMPLETED COORDINATION BETWEEN  
CIVIL AVIATION AND MILITARY.

KILOMETRES TO NEXT WPT	RWY31	2.2	4.0	6.0	8.0	9.9
ALTITUDE		145	240	345	450	550

**MISSED APPROACH:**  
CLIMB ON COURSE 310° TO TX741, TURN RIGHT TO  
LUTUT ON COURSE 083° AT 1200 m. JOIN HOLDING  
PATTERN OR FOLLOW THO XUAN TWR INSTRUCTIONS.

**TRANSITION ALT 2750**



OCA (H)	A	B	C	D
LNAV/VNAV	115 (101)			
LNAV	145 (131)			
CIRCLING	300 (281)	320 (301)	430 (411)	

GS	km/h	150	200	250	300	350
FAF - MAPT (9.9 km)	min:s	3:58	2:59	2:23	1:59	1:42
RATE OF DESCENT FAF-MAPT 3° (5.2%)	m/s	2.2	2.9	3.6	4.4	5.1

CIRCLING IS ONLY IN THE NORTH OF RUNWAY.

SEE THE NEXT PAGES FOR CODING DATA.