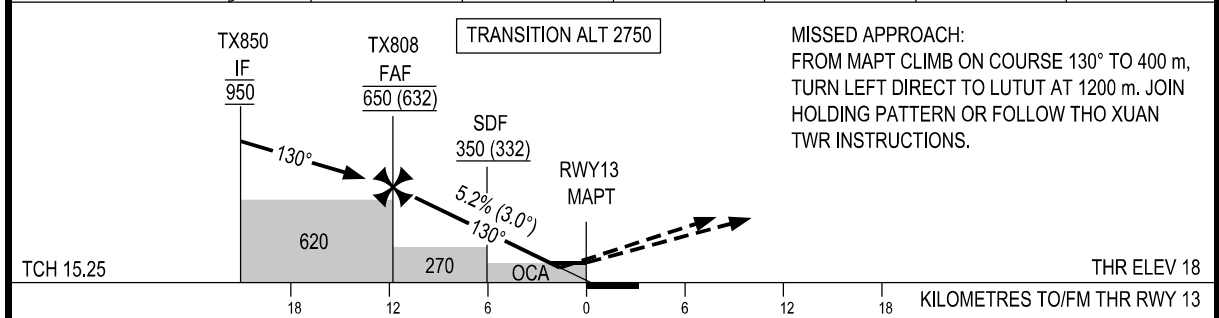


KILOMETRES TO NEXT WPT	RWY13	1.8	4.0	6.0	8.0	10.0	11.8
ALTITUDE		125	240	345	450	555	650



OCA (H)	A	B	C	D	GS	km/h	150	200	250	300	350
LNAV/VNAV	125 (107)				FAF - MAPT (11.8 km)	min:s	4:43	3:32	2:50	2:21	2:01
LNAV	150 (131)				RATE OF DESCENT	m/s	2.2	2.9	3.6	4.4	5.1
CIRCLING	300 (281)		320 (301)		FAF-MAPT 3° (5.2%)						