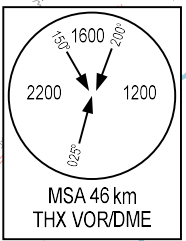


REQUIRED:  
1. VECTORING.  
2. VORDME.



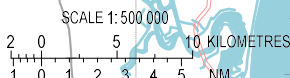
THO XUAN  
VOR/DME 114.8  
THX  $\equiv \equiv \equiv$   
19°53'05"N  
105°29'34"E

LLZ 111.30  
ITX  $\equiv \equiv \equiv$   
GP/DME 332.30  
ITX  $\equiv \equiv \equiv$

MAPT D1.7 ITX

FAF  
19°49'55"N  
105°33'44"E  
D6.1 ITX

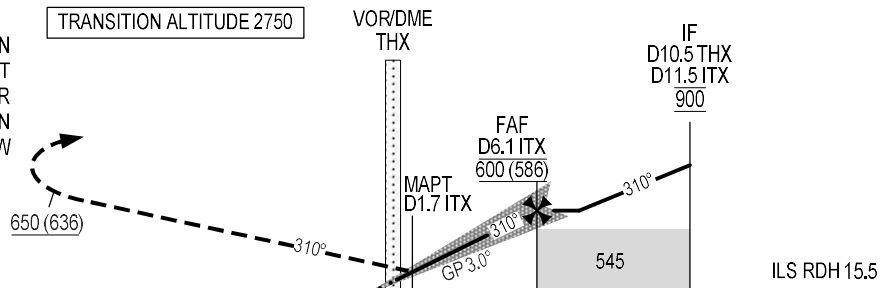
IF  
D10.5 THX  
D11.5 ITX



DME DIST	ITX	1.7	2	3	4	5	6.1
ALTITUDE		175	205	305	400	495	600

MISSED APPROACH:  
PASSING THX VOR/DME CLIMB ON  
R-310 THX TO 650 m, TURN RIGHT  
TO THX VOR/DME AT 1500 m OR  
ABOVE (MAX IAS 410 km/h). JOIN  
HOLDING PATTERN OR FOLLOW  
THO XUAN TWR INSTRUCTIONS.

TRANSITION ALTITUDE 2750



THR ELEV 14.0

KILOMETRES TO/FM THR RWY 31	25	20	15	10	5	0	5	10	15	20	25	30
-----------------------------	----	----	----	----	---	---	---	----	----	----	----	----

OCA (H)		A	B	C	D
STRAIGHT-IN APPROACH	CAT I	96 (82)	99 (85)	102 (88)	105 (91)
	GP INOP	175 (161)			
CIRCLING		300 (281)	320 (301)	430 (411)	

GS	km/h	100	150	200	250	300
FAF - MAPT 8.1 km	min:s	4:16	2:51	2:08	1:42	1:25
RATE OF DESCENT (3.0°)	m/s	1.5	2.2	2.9	3.6	4.4

CIRCLING IS ONLY IN THE NORTH OF RWY.